

Speco Batch Configuration Tool Manual

Purpose

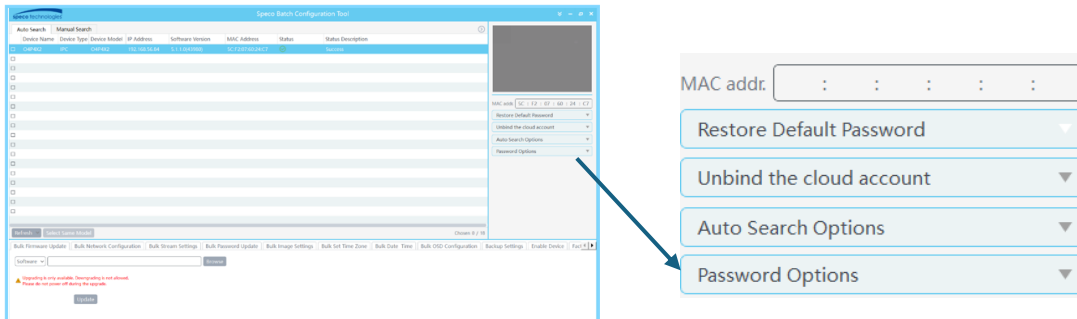
This manual provides step-by-step instructions for configuring and updating Speco IP cameras using the **Speco Batch Configuration Tool**. The tool allows users to efficiently perform bulk updates for firmware, network settings, video streams, passwords, image settings, time zones, OSD, and factory resets.

Requirements

Before beginning, ensure the following requirements are met:

- Speco IP cameras are properly connected and powered on
- A PC or laptop connected to the same network as the cameras.
- The Speco Batch Configuration Tool is installed on the computer.
- All cameras being batch configured use the **same password**.

Note: Batch updates will only work on cameras that share the same login credentials.



- **Password Options:** The default password for the tool is **1234**. If your cameras use a different password, click **Modify Username/Password**, enter the correct credentials, and then click **OK**.

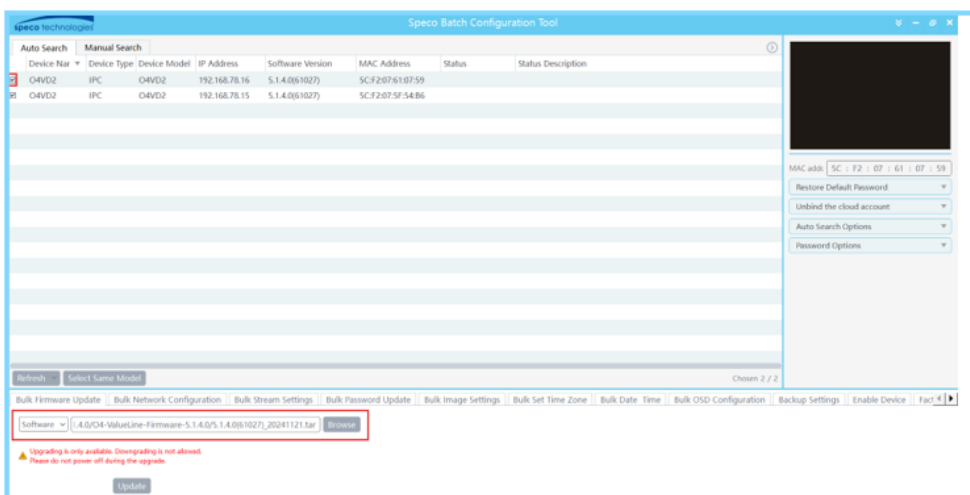
Bulk Firmware Update

Firmware Update Using the Speco Batch Configuration Tool

1. Open the **Speco Batch Configuration Tool** on your PC or laptop. Once the tool loads, it will automatically detect and display all connected cameras on the network. From the camera list, select the cameras to upgrade by:
 - Checking the box next to each camera of the same model, **or**
 - Clicking **Select Same Model**

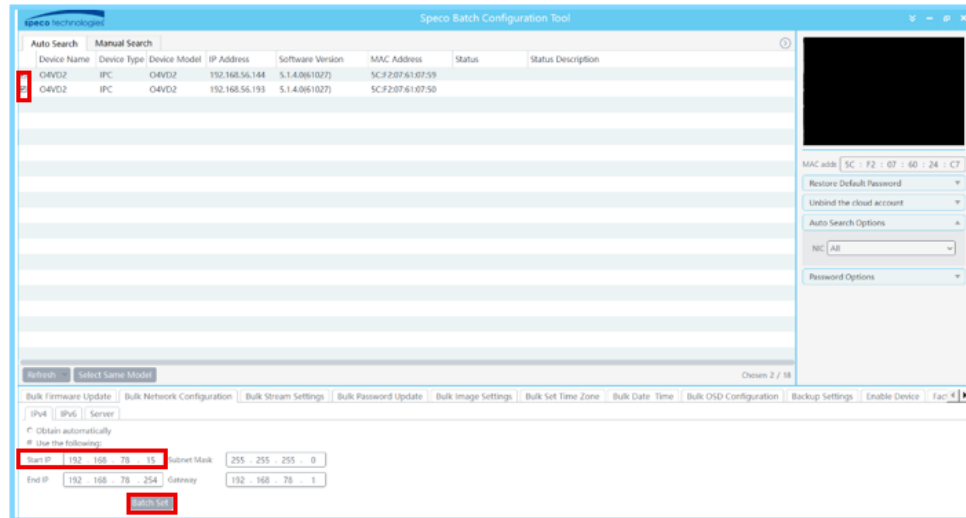


2. Browse your computer to locate and select the appropriate firmware file.

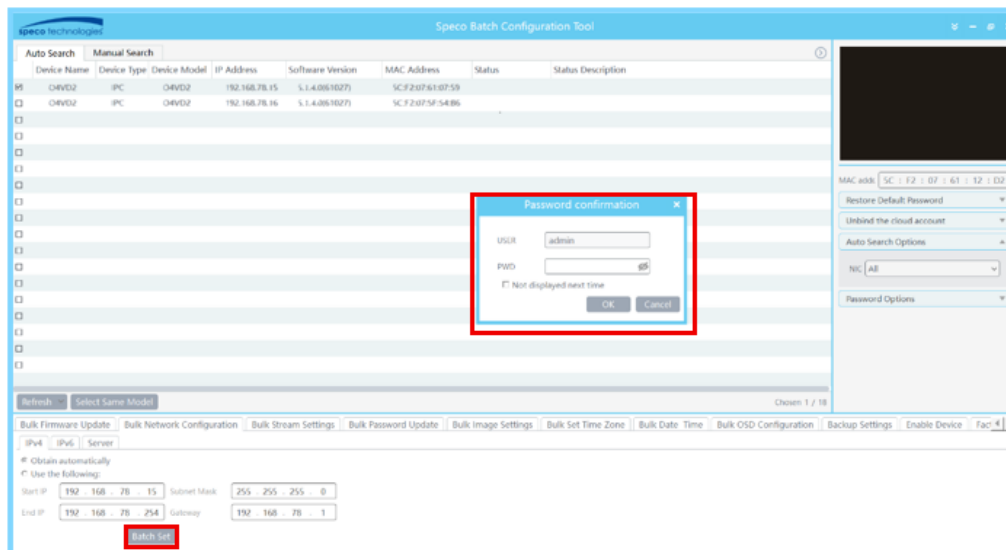


Bulk Network Configuration

1. From the list of detected cameras, select the cameras to configure by checking the box next to each camera of the same model or clicking **Select Same Model**.

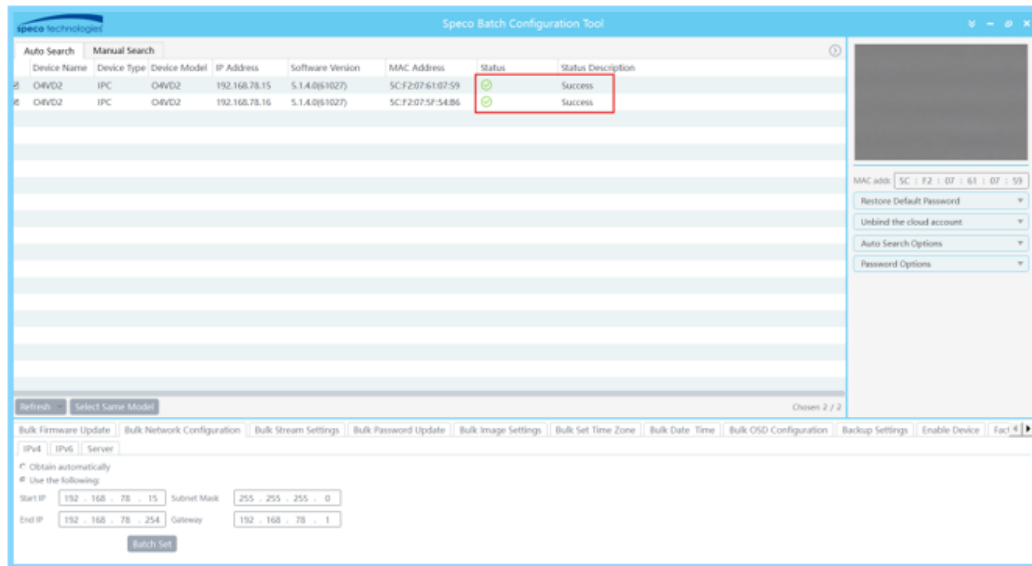


2. Enter the **starting IP address** for the network configuration.
 - o Remaining network settings will be automatically assigned based on the provided IP scheme.



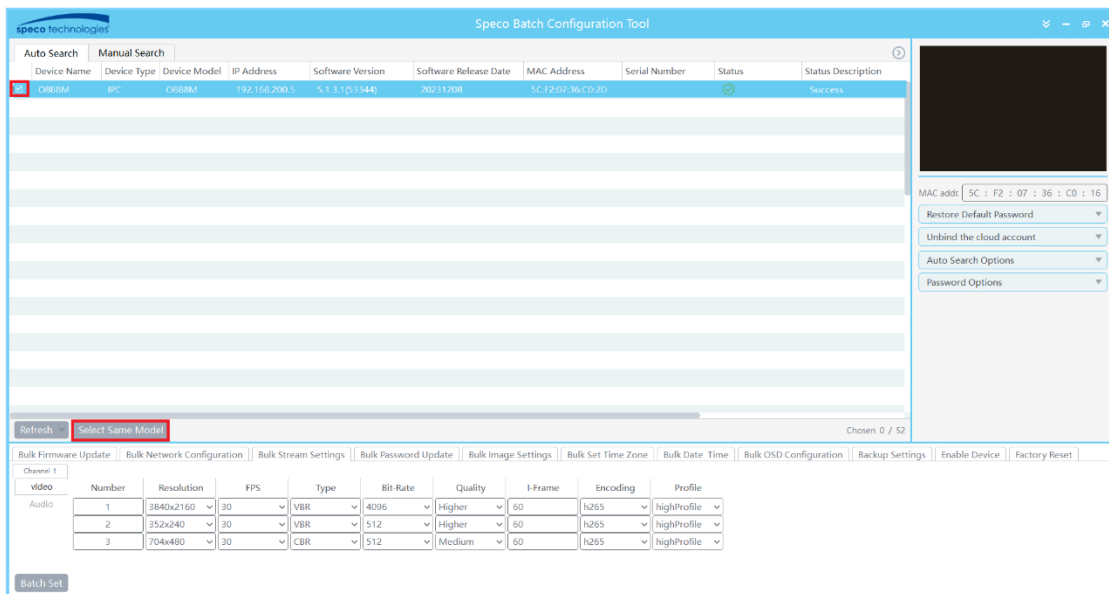
3. Click **Batch Set**. Enter the camera **username** and **password** when prompted.

- During the update, the **Status Description** will display **“Setting.”** Once completed, the status will change to **“Success.”**

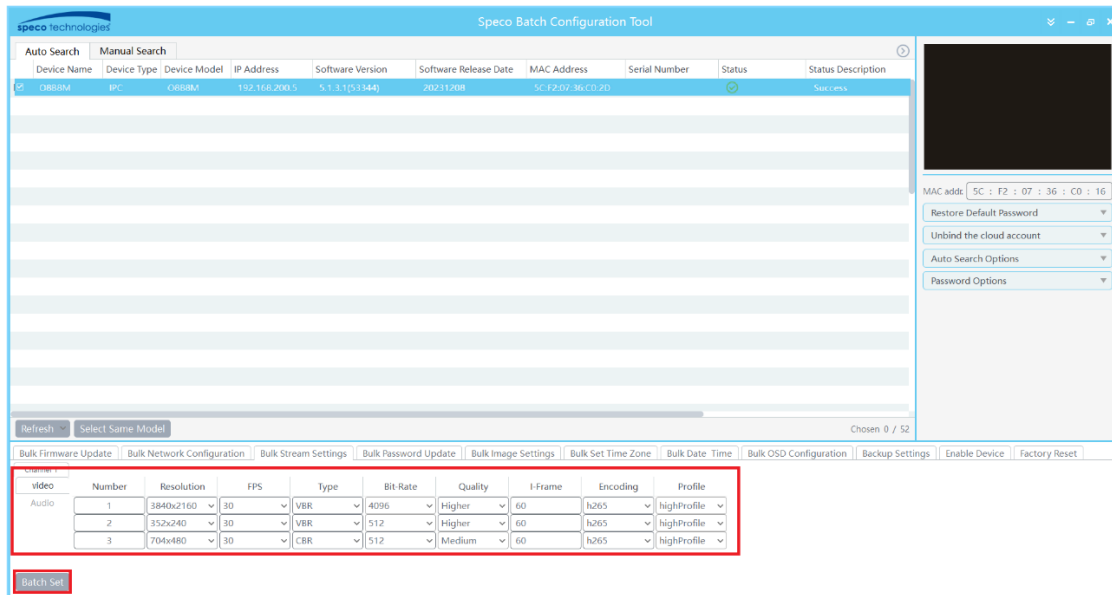


Bulk Stream Settings

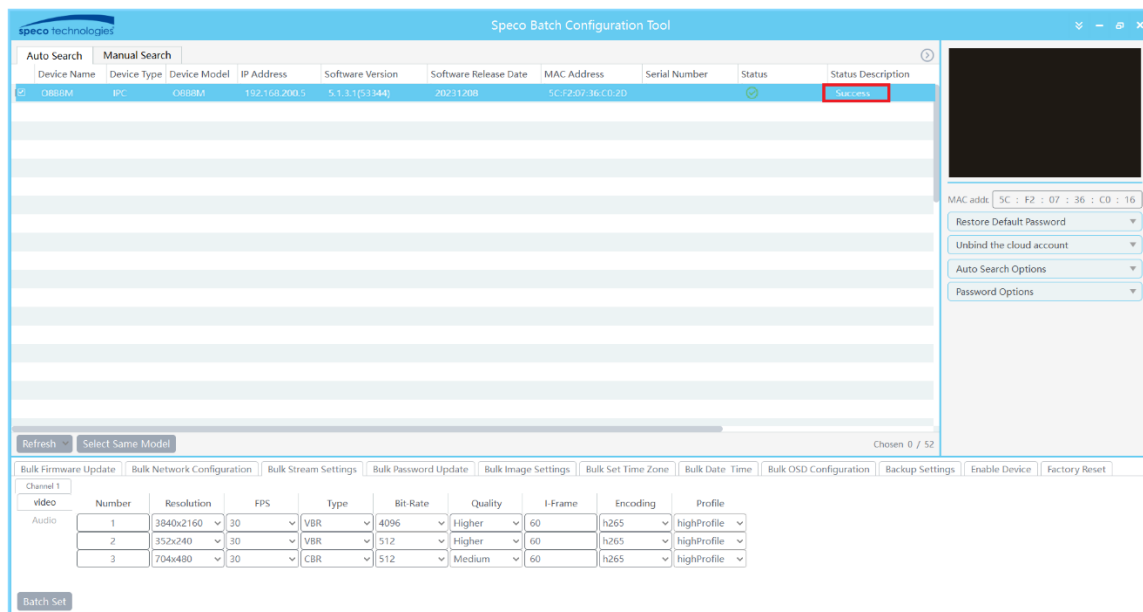
- From the camera list, select the cameras to configure by checking the box next to each camera of the same Settings model or clicking **Select Same Model**.



- Adjust the desired **video stream settings** as required. Click **Batch Set** to apply the changes. Enter the camera **username and password** when prompted.

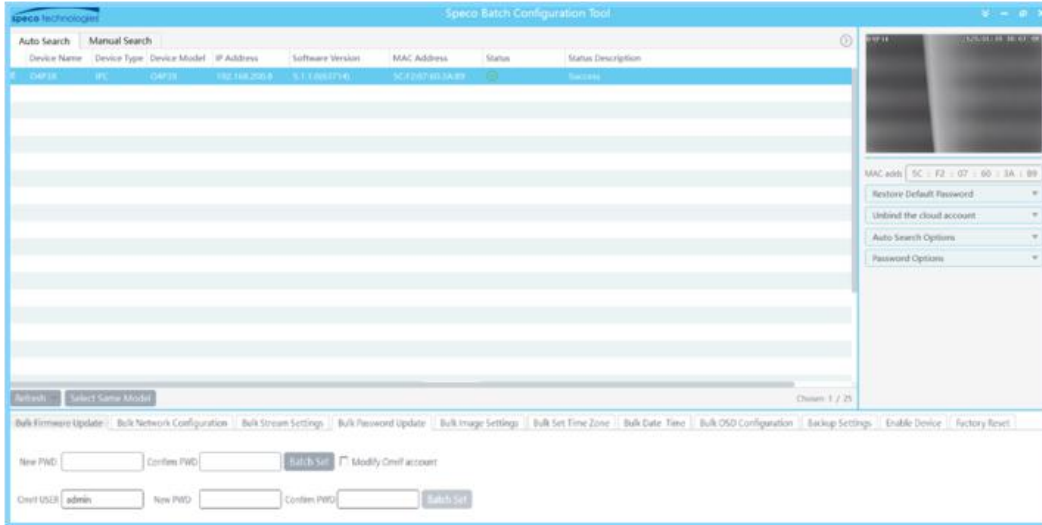


- While updating, the **Status Description** will show **“Setting.”** When completed successfully, **“Success”** will appear.

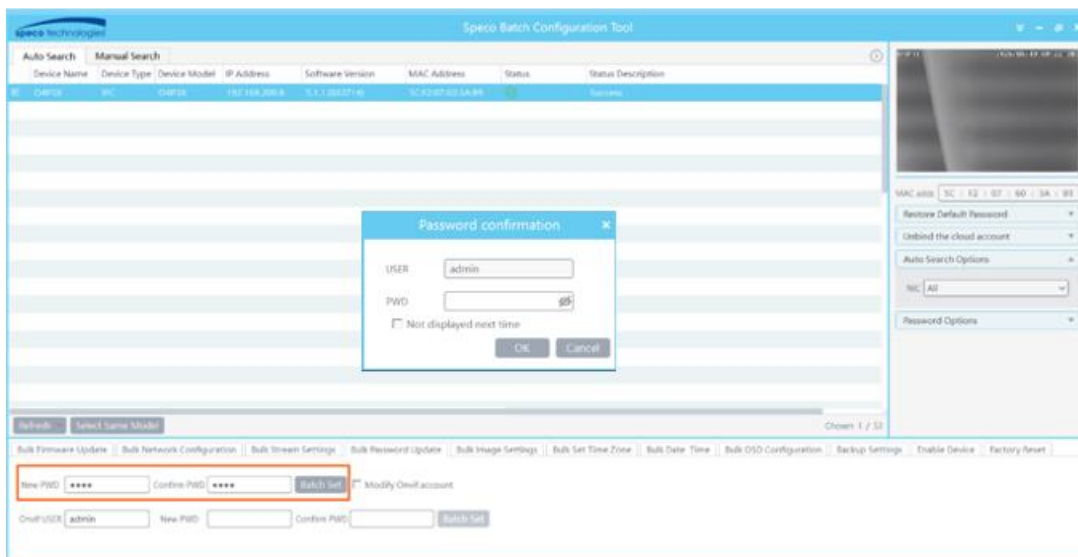


Bulk Password Update

1. From the camera list, select the cameras to update by checking the box next to each camera of the same model or clicking **Select Same Model**.



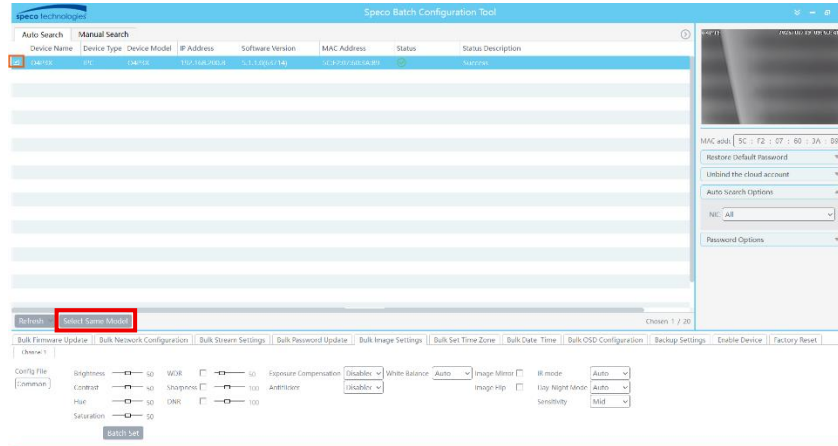
3. Enter the new password in the Password field at the bottom. To match the ONVIF password with the camera password, check the corresponding box and enter the same password. If unchecked, the ONVIF password will remain at the default 1234.



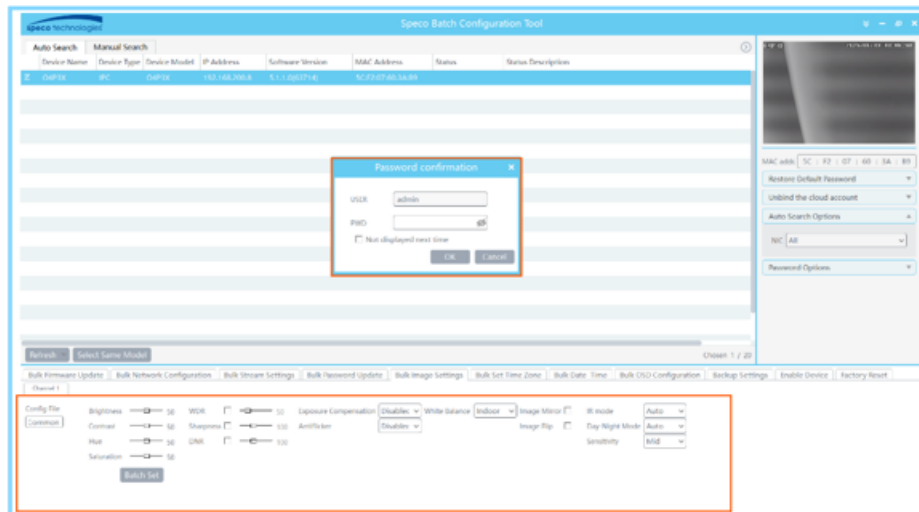
4. Click Batch Set. Enter the current camera username and password when prompted. Once completed, the Status Description will display "Success."

Bulk Image Settings

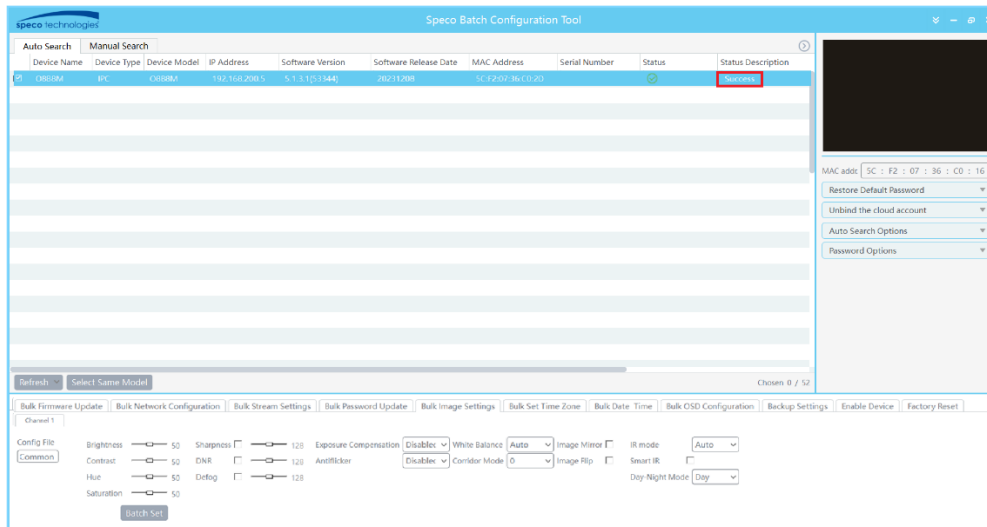
1. From the list of detected cameras, select the cameras to configure by checking the box next to each camera of the same model or by clicking **Select Same Model**.



2. Adjust the **image and video settings** as needed.



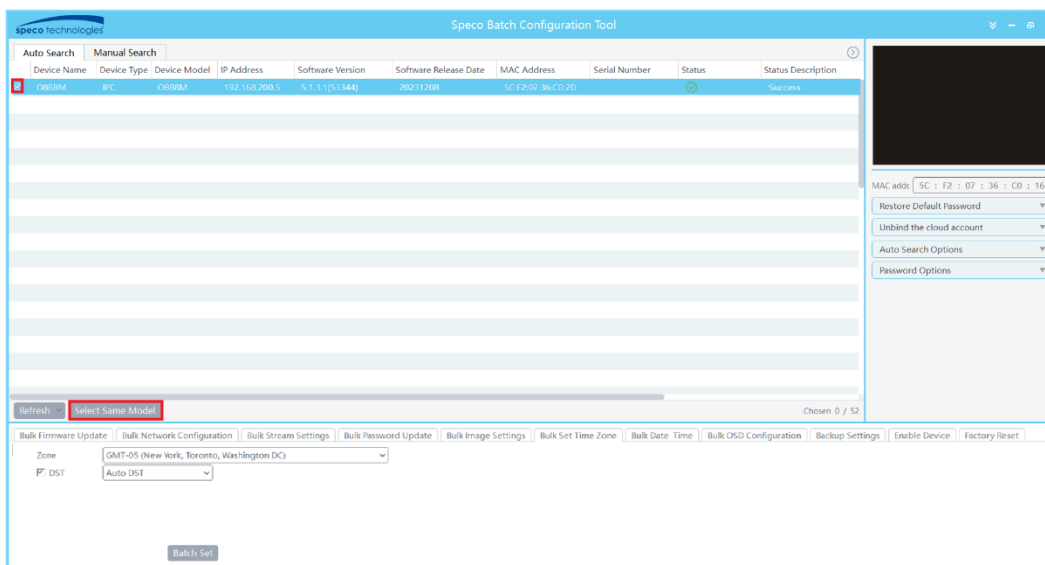
3. Click **Batch Set** to apply the changes. Enter the camera **username and password** when prompted.



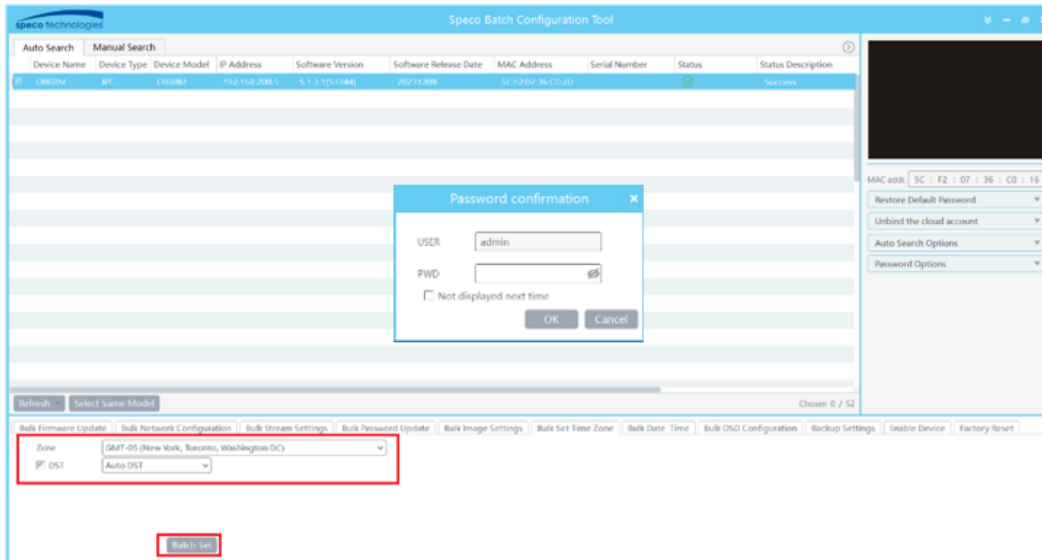
4. The **Status Description** will show **“Requesting”** during the changes. Once completed, the status will change to **“Success.”**

Bulk Set Time Zone

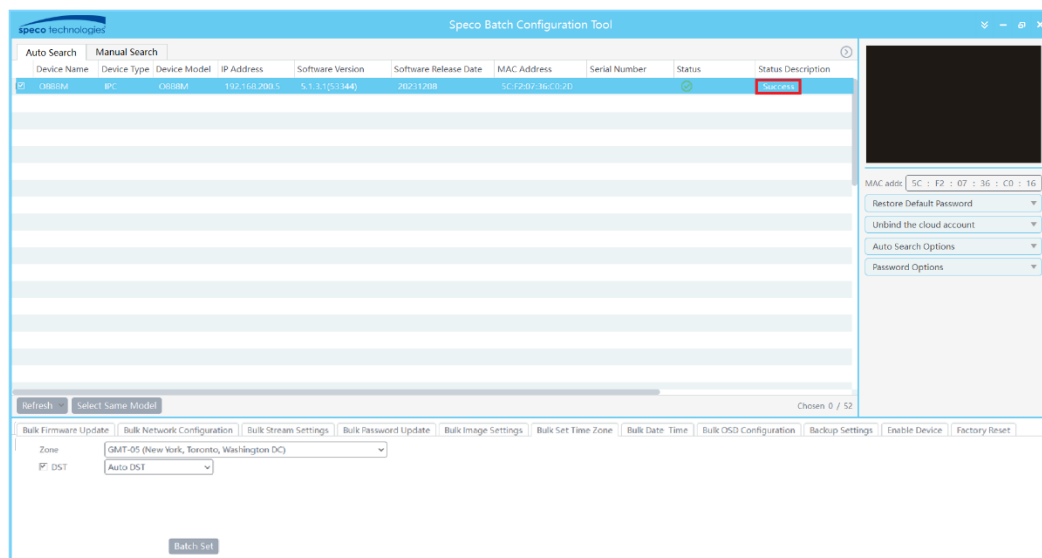
1. From the list of detected cameras, select the cameras to configure by checking the box next to each camera of the same model or by clicking **Select Same Model**.



2. Adjust the **time zone settings**.



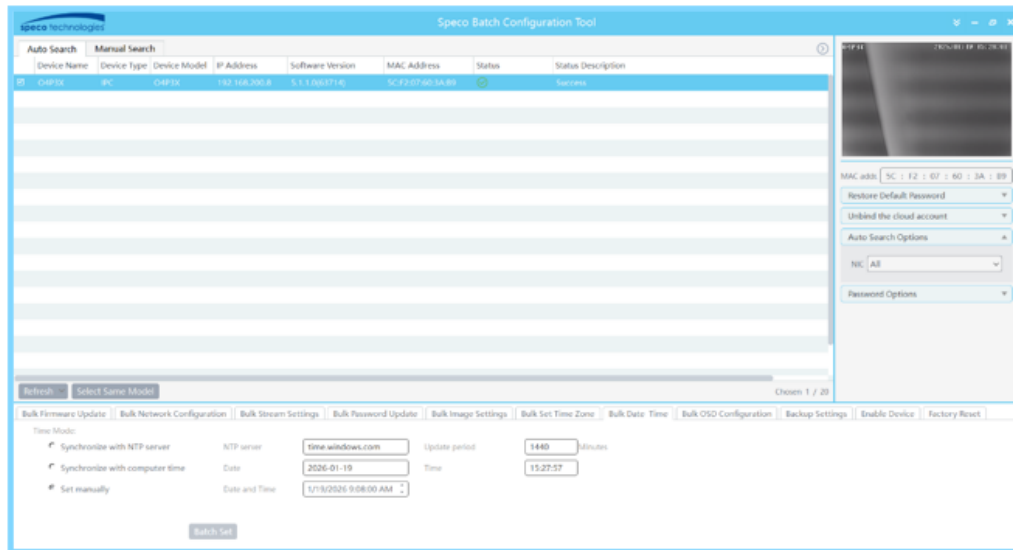
3. Click **Batch Set**. Enter the camera **username** and **password** when prompted.



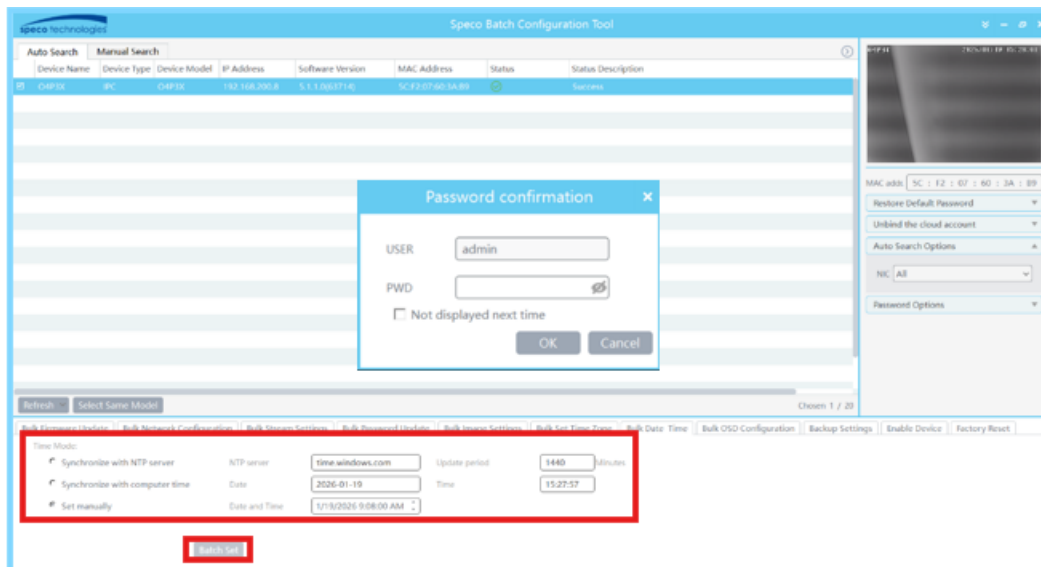
4. The **Status Description** will display **“Setting”** during the update. Once completed, **“Success”** will appear.

Bulk Date Time

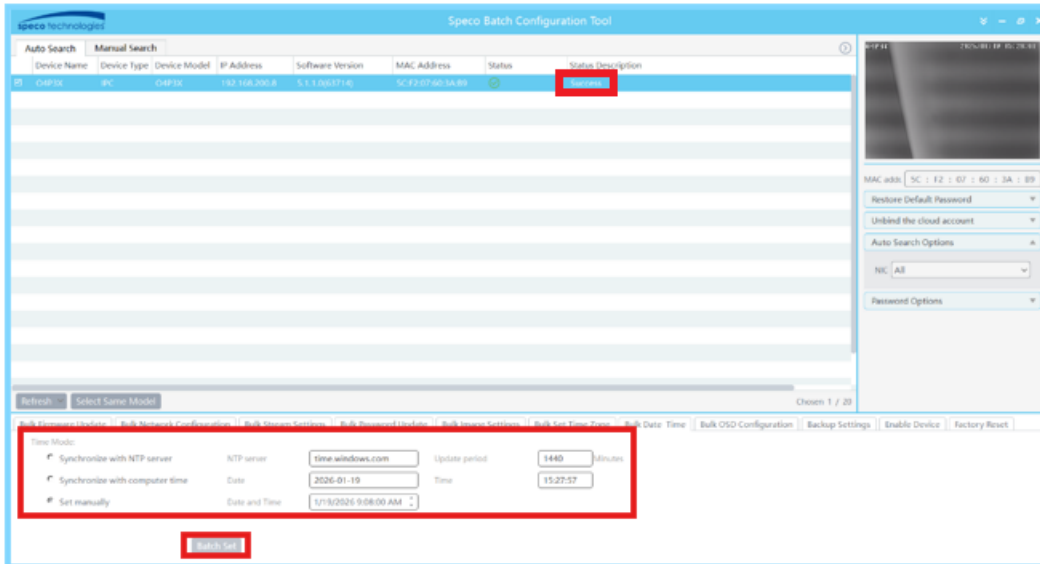
1. From the list of detected cameras, select the cameras to configure by checking the box next to each camera of the same model or by clicking **Select Same Model**.



2. Adjust the **time zone settings**.



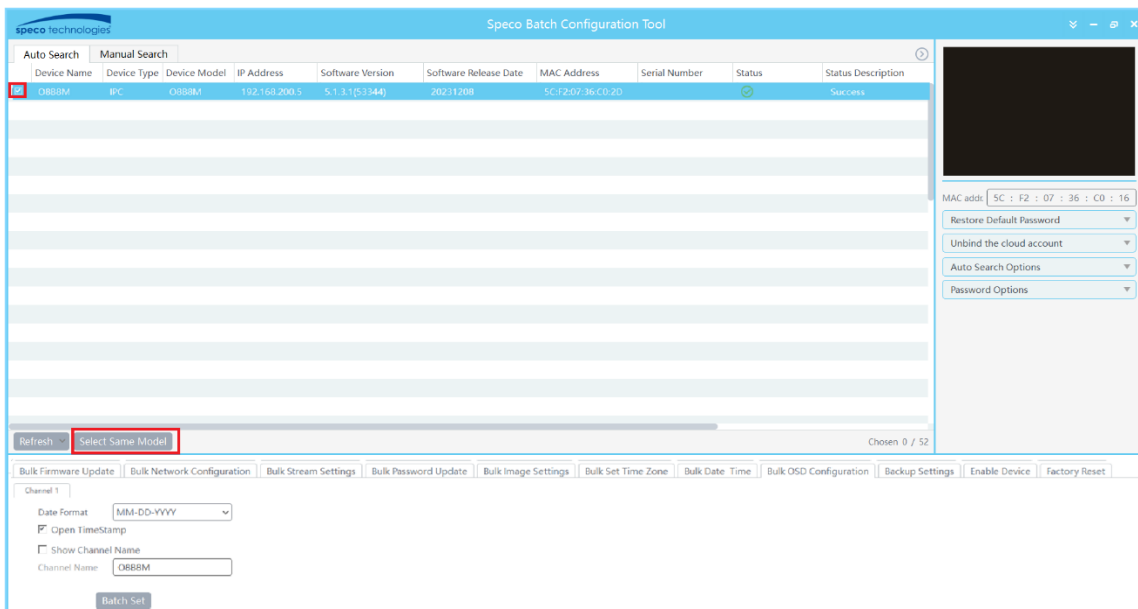
3. Click **Batch Set**. Enter the camera **username** and **password** when prompted.



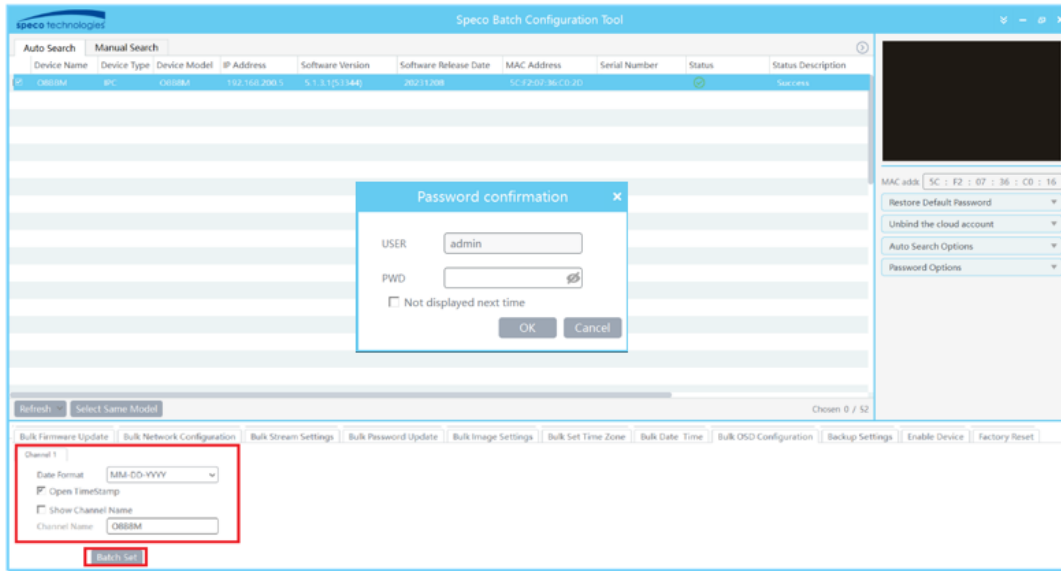
4. The **Status Description** will display “**Setting**” during the update. Once completed, “**Success**” will appear.

Bulk OSD Configuration

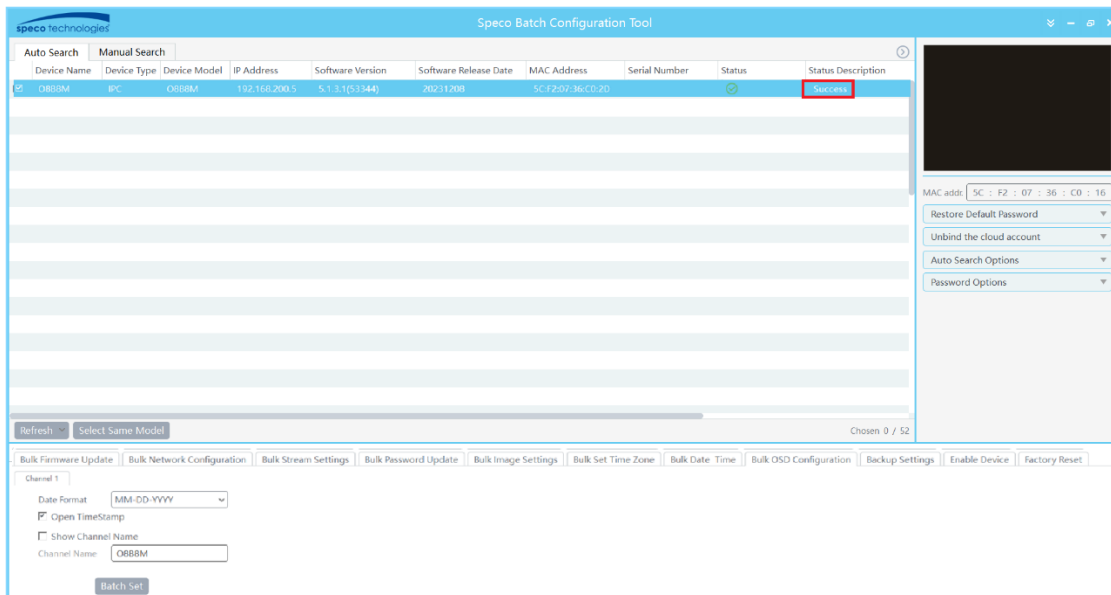
1. From the list of detected cameras, select the cameras to configure by checking the box next to each camera of the same model or by clicking **Select Same Model**.



- Adjust the **OSD (On-Screen Display)** settings as required.



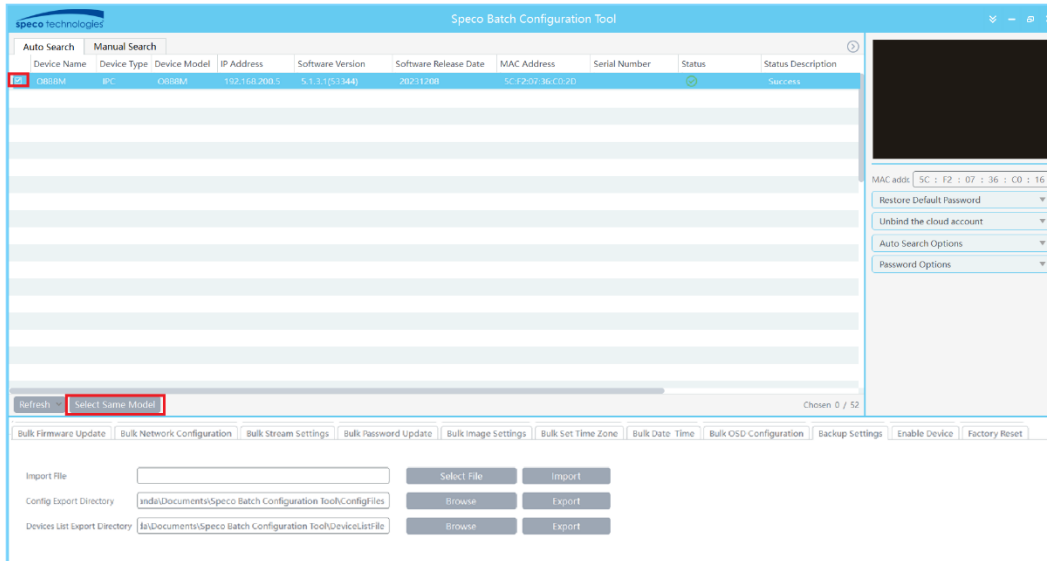
- Click **Batch Set**. Enter the camera **username** and **password** when prompted.



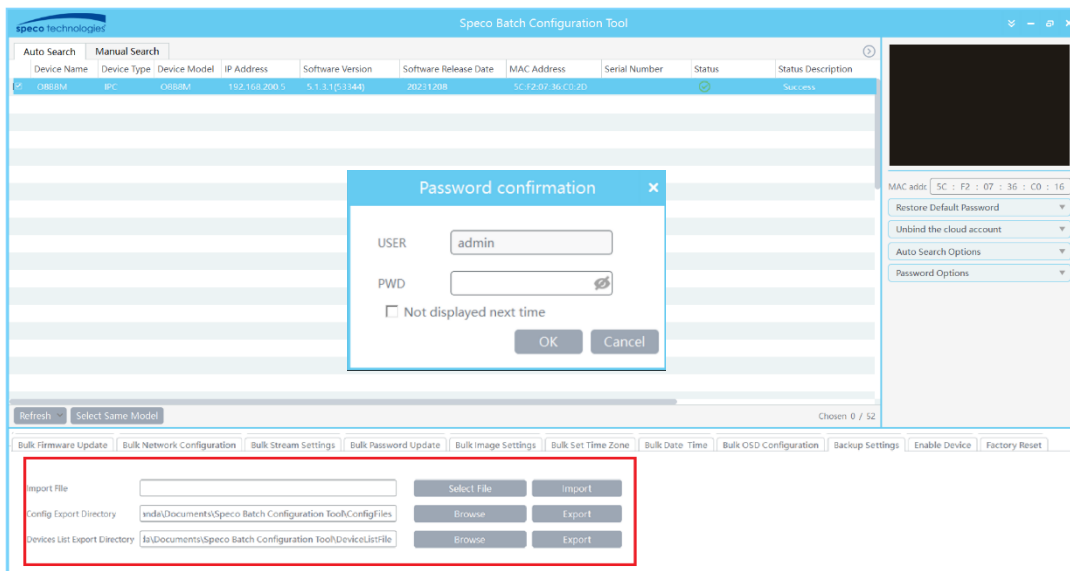
- During the update, the **Status Description** will show "**Setting.**" When complete, the status will display "**Success.**"

Backup Settings

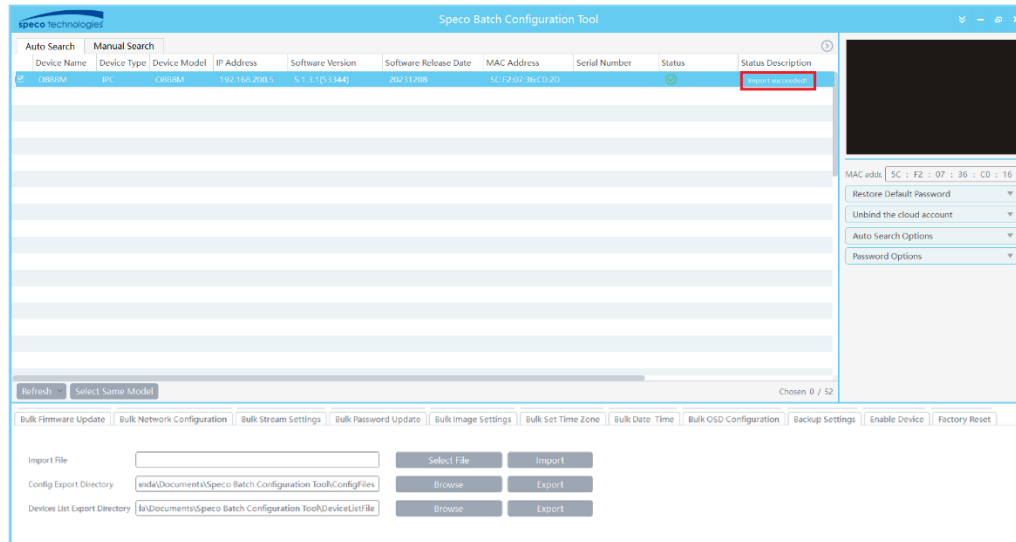
1. From the camera list, select the cameras to configure by checking the box next to each camera of the same model or clicking **Select Same Model**.



2. Select the **Import** or **Export** option. Once selected, enter the camera username and password when prompted.

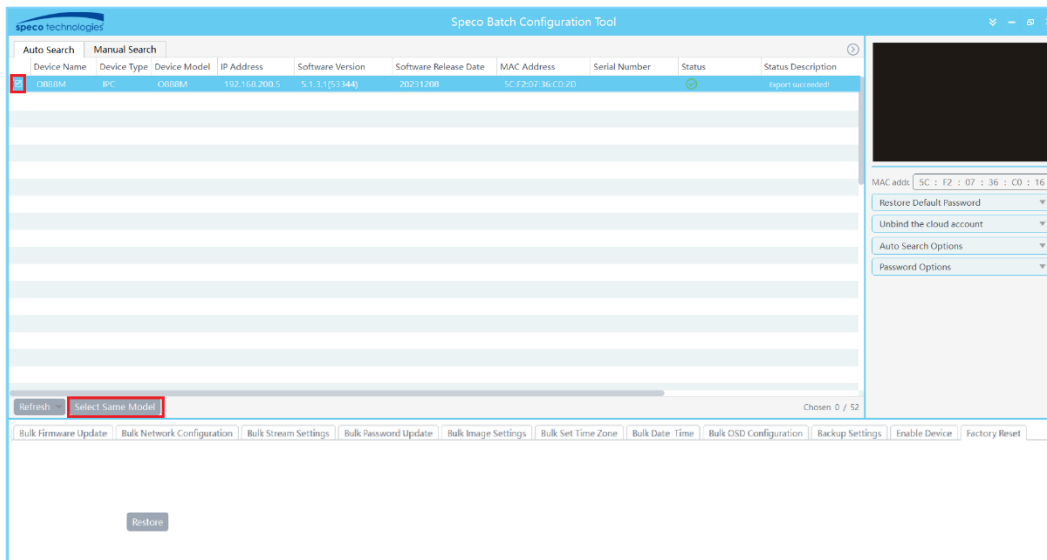


3. During the import /export, when complete, the status will display **“Import or Exported Succeeded.”**

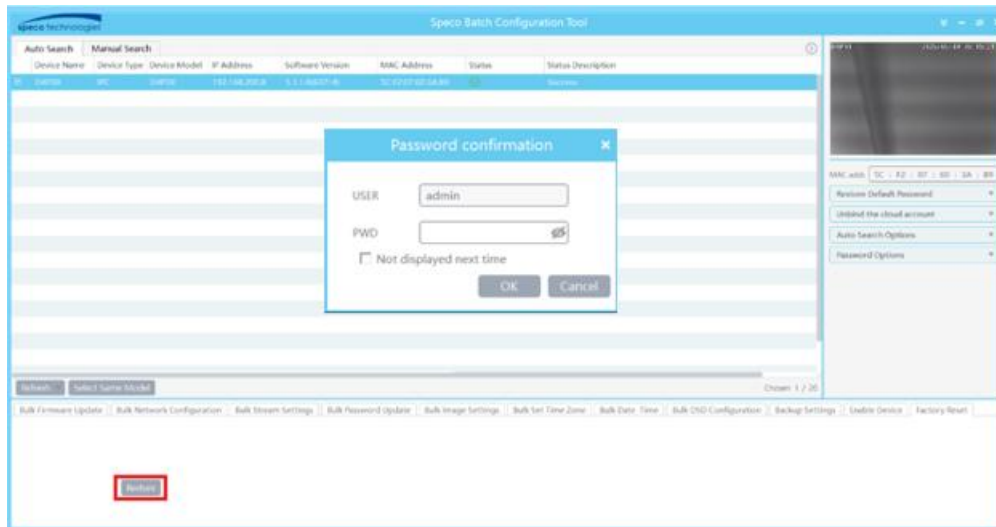


Factory Reset

1. From the list of detected cameras, select the cameras to configure by checking the box next to each camera of the same model or by clicking **Select Same Model**.



- Click **restore**. Enter the camera **username** and **password** when prompted. The cameras will reset to factory defaults.



- Once completed the status will change to **“Factory settings restored successfully!”**

