



Quick Start Guide

04DB1



Scan for Manual and Software downloads

Welcome

Thank you for purchasing this network camera!

This owner's manual is designed to be a reference tool for your system.

Please read this manual carefully before operating the unit and retain it for future reference.

Should you require any technical assistance, contact Speco Technologies Tech Support at 1-800-645-5516

Important Safeguards and Warning

1. Electrical safety

All installation and operation here should conform to local electrical safety codes.

This device should not be connected with existing doorbell power wiring. Only use a certified/listed 12VDC Class 2 power supply and/or PoE. This device does not use residential doorbell AC power unless it is 12VDC only.

Please note: Do not connect two power supplying sources to the device at the same time; it may result in device damage! The product must be grounded to reduce the risk of electric shock.

Improper handling and/or installation could run the risk of fire or electrical shock.

2. Environment

Do not expose the unit to heavy stress, violent vibration or long-term exposure to water and humidity during transportation, storage, and/or installation.

Do not install near sources of heat.

Only install the product in environments inside the specification operating temperature and humidity range.

Do not install the camera near power lines, radar equipment or other electromagnetic radiation.

Do not block any ventilation openings if any.

Use all the weatherproofing hardware requirement to minimize weather intrusion.

3. Operation and Daily Maintenance

Please shut down the device and then unplug the power cable before you begin any maintenance work.

Do not touch the CMOS sensor optic component. You can use a blower to clean the dust on the lens surface.

Always use a dry soft cloth to clean the device. If there is too much dust, use a cloth

dampened with a small quantity of neutral detergent. Finally use a dry cloth to clean the device.

Please use a professional optical cleaning method to clean the enclosure. Improper enclosure cleaning (such as using cloth) may result in poor IR functionality and/or IR reflection.

The grounding holes of the product are recommended to be grounded to further enhance the reliability of the camera.

Warning

This camera should be installed by qualified personnel only.

All the examination and repair work should be done by qualified personnel.

Any unauthorized changes or modifications could void the warranty.

Statement

This guide is for reference only.

Product, manuals and specifications may be modified without prior notice. Speco Technologies reserves the right to modify these without notice and without incurring any obligation.

Speco Technologies is not liable for any loss caused by improper operation.

Note:

Before installation, check the package and make sure that all components are included. Contact your rep or Speco customer service department immediately if something is broken or missing in the package.

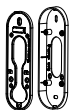
Package



Doorbell



Drill Template



Mounting Plate (x2)



Quick Start
Guide



Power Kit (x1)



Water-proof
connector kit



Tapping screw (x4)
PA4x25



Screw Anchor (x4)



Rubber Plug (x1)



Wire Harness (x1)



Wire Connector (x4)



Machine Screw (x5)
PM3x5



Fuse Wire (x1)



U-shaped Wire (x1)



Cable



Sunshield box



Bubble Level



Screwdriver



Chime

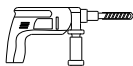


Bracket for
Chime



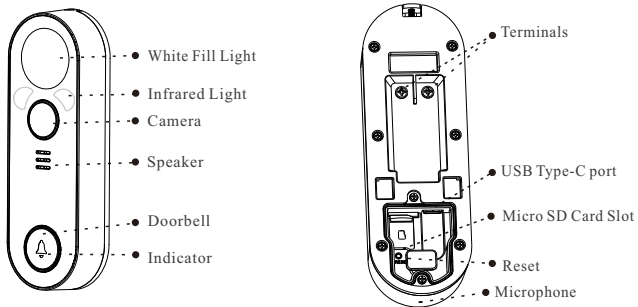
Double-sided
adhesive

Tools You May Need



Drill (x1)

Overview



Indicator Description

Red: starting

Blue: Wi-Fi setting mode

Green: in standby mode at night

Flashing red: network disconnected

Flashing blue: the doorbell button pressed

Flashing green: upgrading

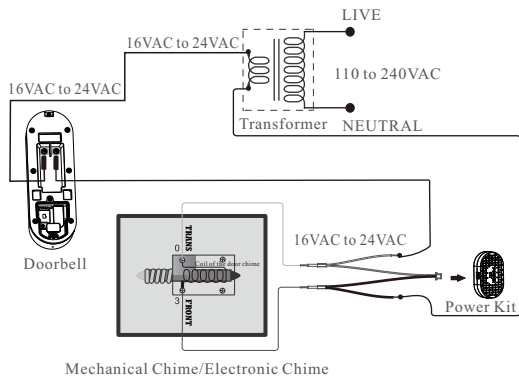
Add to the mobile APP

- ① Enable Wi-Fi network of your phone. Then scan the QR Code of the APP to download and install the APP in your phone.
- ② Run the APP and then login in your account of the APP (if you don't register, please register and log in first). Then enter the server list interface of the APP.
- ③ Power on your video doorbell. Then tap "Add Device" in the server list interface of the APP. Scan the QR code of the device and then follow directions to configure the Wi-Fi network. After that, the device will be automatically added to the server list of the APP. Then you can view the video and receive the relevant information of the device.

Wiring

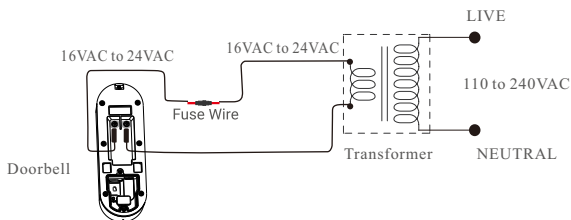
● Doorbell with mechanical/electronic chime

If you have a mechanical chime or electronic chime installed in your home, install the power kit and doorbell, and connect the wires as shown below.



● Doorbell without mechanical/electronic chime

If no mechanical/electronic chime is installed, skip power kit installation, install the doorbell and connect the wires as shown below.

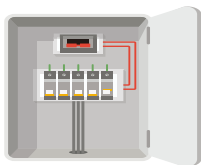


It is recommended to install a new transformer to bring the output 16 to 24V. Please refer to Quick Start Guide of your chime or transformer for the chime or transformer installing details.

Power Kit Installation

The power kit ensures that your doorbell gets the power it needs. Please install it before you install your doorbell.

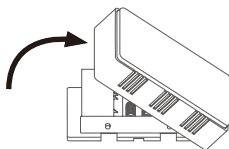
1. Shut off the electricity at the breaker that controls the doorbell's circuit.



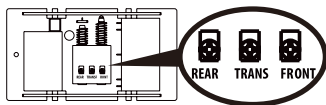
2. Insert one end of the wire harness into the power kit.



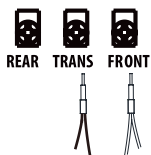
3. Remove the cover from your mechanical chime.



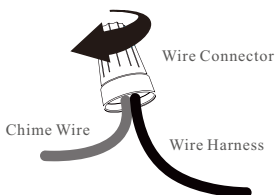
4. Remove the existing chime wires in the terminals named TRANS and FRONT.



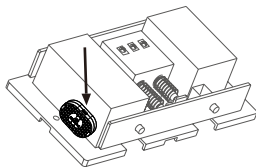
5. Connect the wire harness to the chime's terminals named TRANS and FRONT.



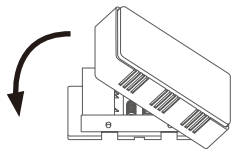
6. Insert the existing chime wire and the other end of the wire harness into the wire connector and twist it tightly. Repeat this step with the other chime wire.



7. Install the power kit to the side of the chime.



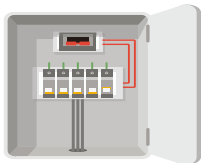
8. Replace the chime cover.



Doorbell Installation

i Recommended Installation Height: 1.2m (4ft) above the ground.

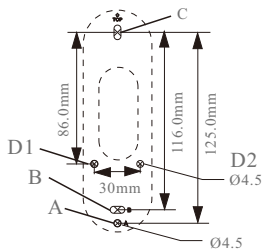
1. Shut off the electricity at the breaker that controls the doorbell's circuit.



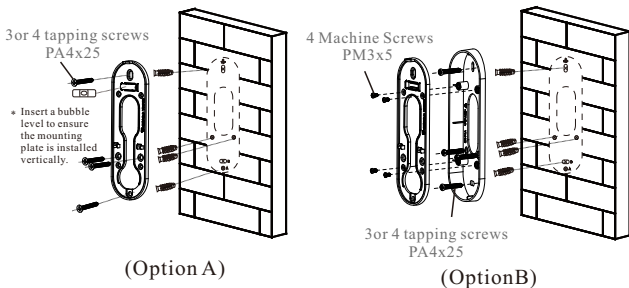
2. Stick the drill template onto the wall and then drill three or four holes.

Option A(below): “C, D1 and D2” or “C, D1, D2, and A”

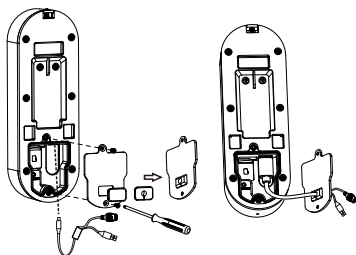
Option B(below): “C, D1 and D2” or “C, D1, D2, and B”



3. Screw the mounting plate onto the wall with three or four screws.

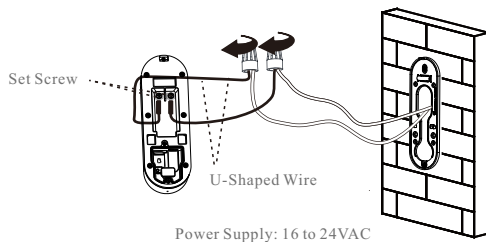


4. (Optional) Unscrew the cover and insert the USB type-C plug into the USB port. Then connect the network cable and power as needed.

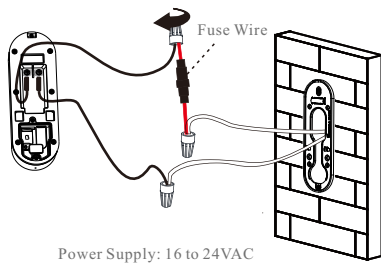


5. If you have a chime installed, follow Option a; If not, follow Option b.

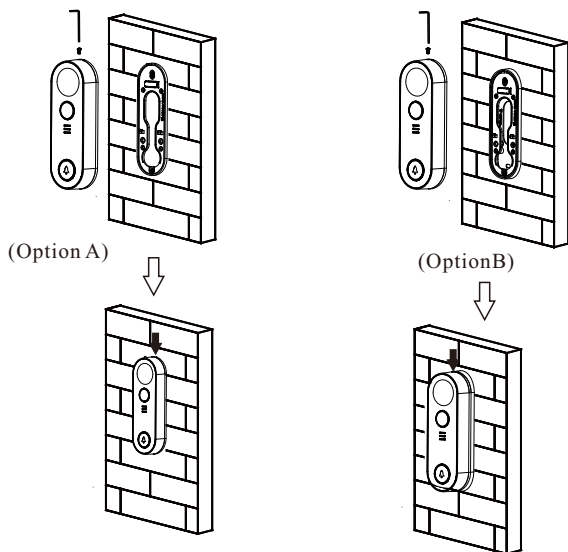
Option a: Connect doorbell to your existing doorbell wires.



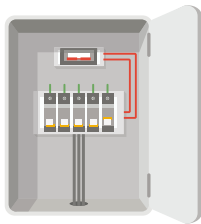
Option b: Connect the fuse wire to your existing doorbell wire.



6. Hang the device onto the mounting plate hook and then fasten the device with the lock screw.



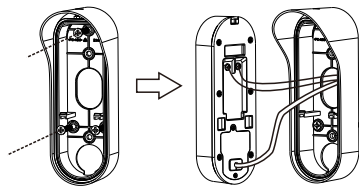
7. Restore the electricity at the breaker.



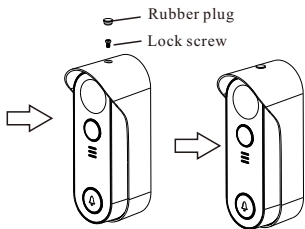
Doorbell is powered on when its indicator flashes blue quickly. If not, make sure your electricity is off and check the wiring. If yes, proceed to doorbell setup.

Mounting with Sunshield Box

Option A

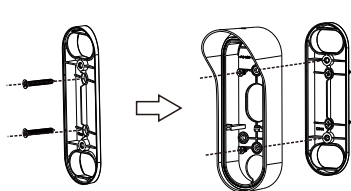


- 1** Install the Sunshield box onto the wall.
Then route and connect the cables.



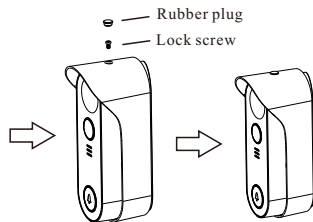
- 2** Install the sunshield box to the doorbell
and secure it with the lock screw.
Finally, insert the rubber plug.

Option B



- 1** Install the mounting plate onto the wall.

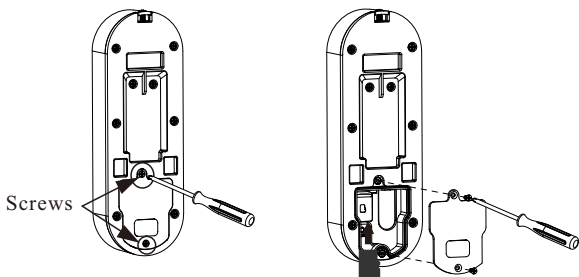
- 2** Install the sunshield box onto the mounting
plate and then route and connect the cables.



- 3** Install the sunshield box to the doorbell
and secure it with the lock screw.
Finally, insert the rubber plug.



Micro SD Card Installation (Optional)

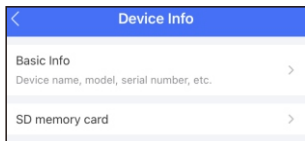
1. Remove the cover on the back of the doorbell.
2. Insert a micro SD card into the slot.
3. Replace the cover and secure it with two screws.



After installing a micro SD card, you can initialize the card in the mobile APP before using it.

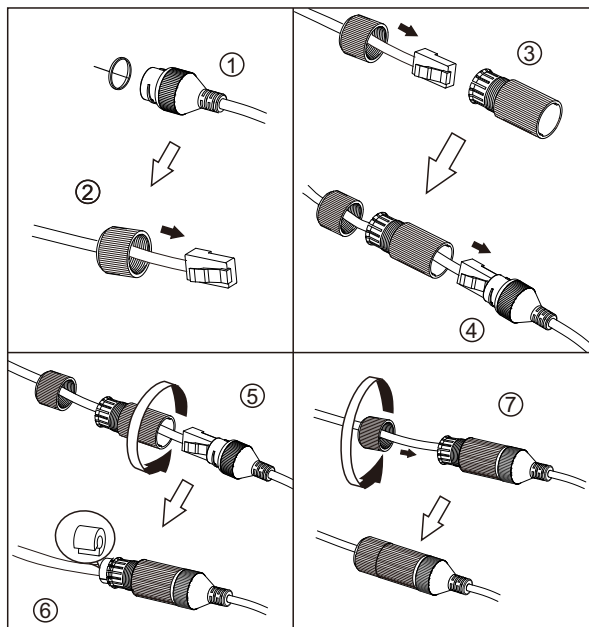
Initialize Micro SD Card

1. In the APP, tap  to enter the server list interface. Tap  in the server list interface to go the device information interface.



2. Tap SD memory card to check the micro SD card status.
3. If it is the first time for you to use it, you can click “Format” to initialize it.

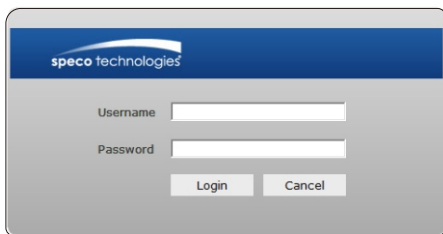
Network Cable Connection (optional)



* If the RJ 45 connector of the network cable has a jacket and cannot be threaded through the kit, remove the jacket. If the jacket cannot be removed, cut off the connector and install an RJ 45 connector without the jacket.

Wired Network Connection & Login

- ① Make sure that the device and the PC are connected to the same local network. The camera is set to DHCP by default.
- ② Install Speco Blue Scanner and run it after installation. Speco Blue Scanner is the tool for discover the IP cameras on the local network. It can be downloaded from www.specotech.com.
- ③ In the device list, you can view the IP address, model number, and MAC address of each device. Select the applicable device and double click to open up the web viewer. You can also manually enter the IP address in the address bar of the web browser .



The login interface is shown above. Default user name is admin and password is 1234. After logging in, follow directions to install applicable plugins if prompted. After that, you can log in and configure the relevant parameters via web as needed.

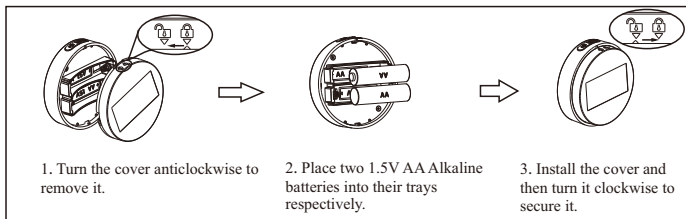
- ④ Use your phone to scan the QR Code of the APP and then download and install the APP.
- ⑤ Run the APP and then login in your account of the APP (if you don't register, please register and log in first). Then enter the server list interface of the APP. Tap "Add Device" and scan the QR code of the device to directly add the device to the server list of the APP. Then you can view the video and receive the relevant information of the device.

Chime Installation

● Battery Installation

Please use two 1.5V AA Alkaline dry batteries.

Carbon zinc dry batteries or rechargeable batteries are not recommended.



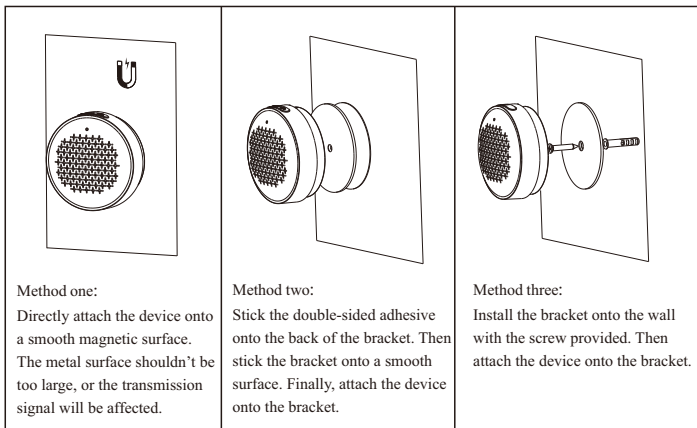
Low Battery Reminder:

When the battery is low, the system will remind you. After you hear the warning voice, please replace your batteries in time.

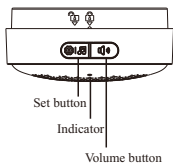
● Chime Installation

The chime can be directly placed on the desktop or installed according to the following methods.

Note: The chime should be installed near the doorbell.



● Chime and Doorbell Pairing



Note:

If the doorbell doesn't pair within 30s, the chime will exit the pairing mode and wait for next pairing attempt.

1. Press and hold the Set button for 3s. You will hear a notification tone and see the light flashing, indicating that the system is in pairing mode and has reset previous settings.
2. Press and hold the Bell button of the doorbell for 5s. Then the doorbell sends the pairing information.
3. Once it is paired successfully, a notification tone will sound and the indicator turns on for 5s and then turn off.

Adjusting Volume:

Press the volume button and then you will hear the current ring volume. Each press will increase the volume gradually. Continue pressing the button to cycle through volume levels until you reach the desired level.

Selecting Ring Tone:

Press the Set button and release it quickly to hear the current ring tone. Each press will switch to the next available tone. Continue pressing the Set button to cycle through tones until you find the one you prefer.

Troubleshooting

1 I have installed my doorbell, but the chime in my home doesn't function.

1. Make sure the input voltage ranges from 16V to 24V. Your doorbell should work with at least 16V of AC power. Doorbell running at a lower voltage (or running on DC rather than AC) may cause chime malfunction.
2. Select the right chime type (same as the product label) in the APP or Web client.
3. Power on the doorbell and wait for 10 minutes to 3 hours, and then try again.
4. Check whether your doorbell is under high temperatures for a long time.

2 I have failed to connect my doorbell to Wi-Fi.

1. Make sure your doorbell is not blocked by firewall or any limitation in your network.
2. Do not connect too many devices to the router.
3. Make sure the static IP setting is disabled and the router can distribute IP address to your device (DHCP is on).

3 My doorbell is offline frequently.

1. Make sure the doorbell has a strong and stable Wi-Fi signal.
2. Make sure your router and the Internet is functional.
3. The doorbell requires at least 2 Mbps uploading speed. Please make sure the bandwidth of the network is sufficient, and do not have too many devices connected to the router.
4. If all the trouble shooting techniques listed above do not solve the problem, please delete the device from your APP account, reset and re-add.