



**speco**<sup>®</sup>  
technologies

# **SPIPIC Manual**



Scan for manual and Software downloads

# Smart IP Video Intercom

## Manual | Model SPIPIC

### Content

#### 1. Overview

#### 2. Interface Description

#### 3. Web Configuration

#### 4. Status

#### 5 SIP Setting

5.1 SIP Account

5.2 SIP Advanced

#### 6 Basic Setting

6.1 Audio Setting

6.2 MIC

6.3 Media File

6.4 Video Setting

6.5 Storage

6.6 Playback

#### 7 Network Setting

7.1 TCP/IP

7.2 ONVIF

7.3 Firewall

#### 8 Advance Setting

8.1 Input

8.2 RTP Multicast

8.3 Schedule

8.4 Http URL

#### 9 System

9.1 Date/Time

9.2 Security

9.3 Upgrade

#### 10 Speco Audio Manager

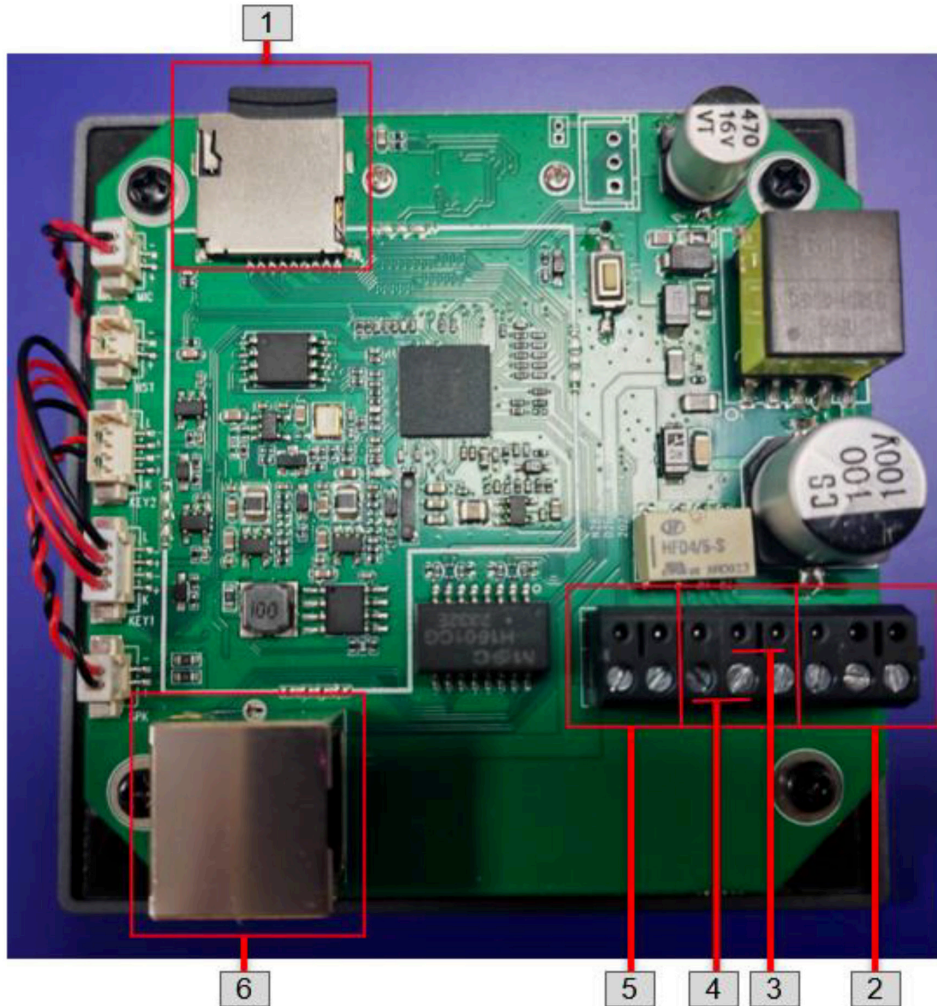


## 1. Overview

The SPIPIC is a smart IP video intercom designed for two-way audio communication over IP networks. It is compatible with SIP & ONVIF protocols, enduring seamless integration with VoIP systems and security networks. The device is equipped with echo cancellation, automatic gain control, and noise reduction features to ensure clear audio quality, complemented by 2M pixel camera for high-definition video. The inclusion of a TF card slot allows for convenient storage of recorded footage. It supports PoE power supply and has a robust alloy shell, making it both durable and easy to install. With its comprehensive specifications and features, the SPIPIC is an excellent choice for modern communication needs in secure environments.



## 2. Interface Description



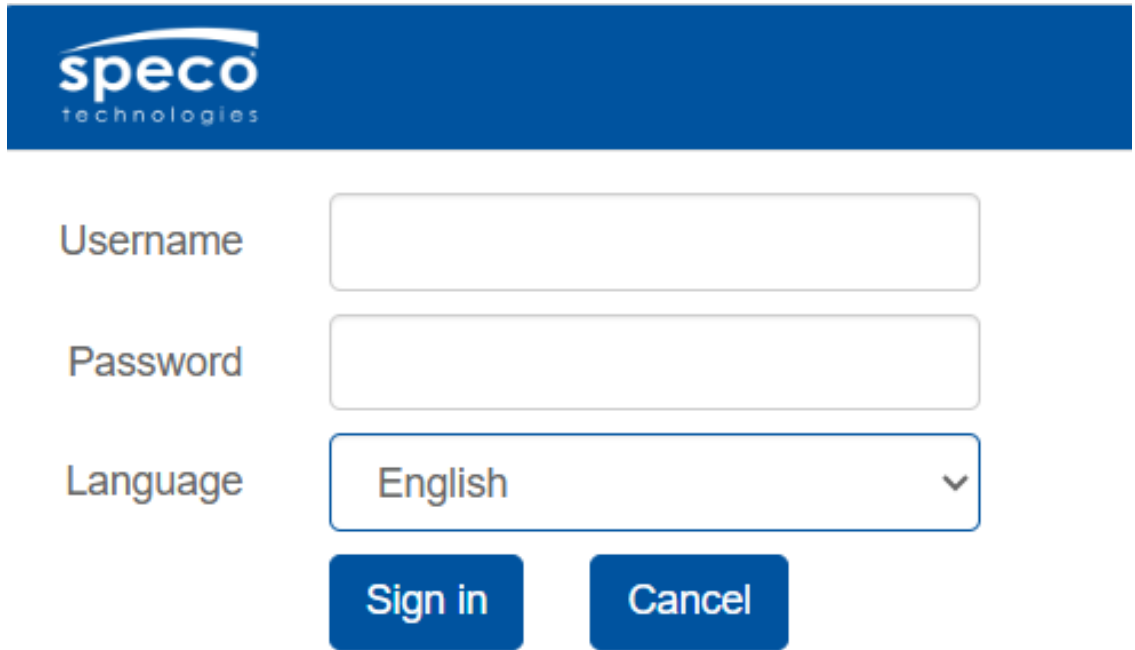
1	SD card Interface	Video storage
2	Relay	NC, COM, NO
3	IO OUT	
4	IO IN	
5	DC power in	12V in
6	POE	802.3af

### 3. Web Configuration

The web configuration encompasses all function settings. When both the device and your computer are connected to the same network, please open a browser and type in `http://192.168.5.200`. Then, log in using the default username and password provided below.

Username: admin

Password: 1234



speco  
technologies

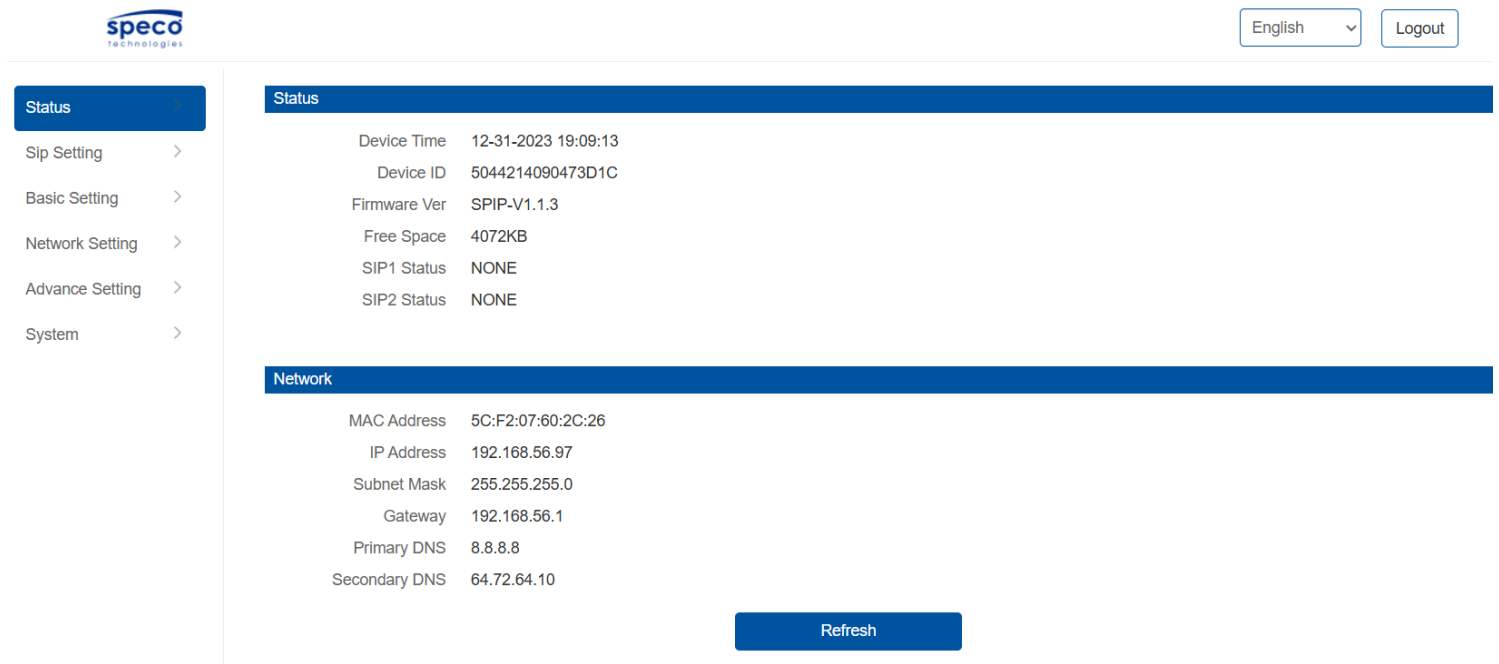
Username

Password

Language English ▼

### 4. Status

You can access the firmware version, available space, and status of two SIP accounts for the SPIPIC. Additionally, you can locate current network information such as Mac address, IP address, gateway, and more.



speco  
technologies

English ▼

**Status**

Device Time	12-31-2023 19:09:13
Device ID	5044214090473D1C
Firmware Ver	SPIP-V1.1.3
Free Space	4072KB
SIP1 Status	NONE
SIP2 Status	NONE

**Network**

MAC Address	5C:F2:07:60:2C:26
IP Address	192.168.56.97
Subnet Mask	255.255.255.0
Gateway	192.168.56.1
Primary DNS	8.8.8.8
Secondary DNS	64.72.64.10

## 5. SIP Setting

### 5.1 SIP Account Settings

Each device supports two SIP accounts. Fill in the SIP extension messages in the provided blanks, and save the configuration. Afterwards, you can check whether it successfully registers on the “Status” page or not.

**Outbound Proxy:** Support to set outbound server, choose Disable or Enable. **Expire Time:** Set the expire time registered account information.

**Ringing Tone:** 10 users upload media files.

**Auto Answer:** Answer immediately and answer delay when a calling income. **Encryption:** Support SRTP or None

Account	Account 1	NONE
User Name		
Auth ID		
Password		
Display Name		
Server Host		
Server Port	5060	
Outbound Proxy	Disable	
Expire Time	180	Seconds
Ringing Tone	Custom	
	440/2000,0/4000	
Auto Answer	Answer Immediately	
Encryption	None	

Save

### 5.1 SIP Advanced Settings

**SIP Protocol:** UDP, TCP, TLS.

**Audio Codec Setting:** Four audio codes to compatible with major audio sources.

**Video Codec Setting:** only support H264 format.

SIP Port	5060
SIP Protocol	UDP
Audio Codec Setting	<input type="checkbox"/> OPUS <input checked="" type="checkbox"/> G.722 <input checked="" type="checkbox"/> G.711U <input checked="" type="checkbox"/> G.711A
Video Codec Setting	<input checked="" type="checkbox"/> H264

Save

## 6. Basic Settings

### 6.1 Audio Settings

**Volume:** Adjust volume at 0-100.

**Amp Auto OFF:** It's set defaulted as ON, then there is no noise went not broadcasting. **Jitter Buffer:** To make the audio more stable.

**HPF:** High Pass Filter

**NR:** Noise Reduction

Volume (0-100)	60	
Amp Auto OFF	NO	
Jitter Buffer (60 - 2000)	180	ms
HPF	<input type="checkbox"/>	
NR	<input type="checkbox"/>	

Save

## 6.2 MIC

Gain: Manual set, four option: none, low, middle, high.

Volume: Adjust MIC volume at 0 0-100.

AEC (acoustic echo canceling): To make a perfect sound quality.

AGC (automatic gain control): Three option: low, middle, high high.

HPF: High Pass Filter

NR: Noise Reduction

MIC Enable	<input checked="" type="checkbox"/>
Gain	None <input type="text"/>
Volume (0-100)	60 <input type="text"/>
AEC	<input checked="" type="checkbox"/>
AGC	<input checked="" type="checkbox"/>
AGC Target	Middle <input type="text"/>
HPF	<input checked="" type="checkbox"/>
NR	<input checked="" type="checkbox"/>
NR Level	1 <input type="text"/>

Save

## 6.3 Media File

You can upload 10 media files as customers' demands: music, announcement, bells, etc.

#	Name	File
1	userfile1	bell1.mp3
2	userfile2	
3	userfile3	
4	userfile4	
5	userfile5	
6	userfile6	
7	userfile7	
8	userfile8	
9	userfile9	
10	userfile10	

## 6.4 Video Setting

Display : Manual set and default

Brightness:	<input type="range" value="104"/>	Contrast:	<input type="range" value="70"/>
Saturation:	<input type="range" value="64"/>	Sharpness:	<input type="range" value="104"/>
BLC:	<input type="range" value="0"/>	HLC:	<input type="text" value="Off"/>
2D NR:	<input type="range" value="18"/>	3D NR:	<input type="range" value="10"/>
White Balance:	<input type="text" value="Auto"/>	White Balance R Gain:	<input type="range" value="25"/>
White Balance G Gain:	<input type="range" value="25"/>	White Balance B Gain:	<input type="range" value="25"/>
Power Frequency:	<input type="text" value="50Hz"/>	Forced Anti-flicker:	<input type="text" value="Off"/>
Horizontal Tailor:	<input type="range" value="0"/>	Vertical Tailor:	<input type="range" value="0"/>
Mirror:	<input type="text" value="Off"/>	Flip:	<input type="text" value="On"/>
Defogging:	<input type="text" value="Off"/>	Defogging Level:	<input type="range" value="128"/>
Exposure Type:	<input type="text" value="Auto"/>	Exposure Time:	<input type="text" value="1/2000"/>

Save

Reset Default

Main Stream: Manual set and default set.

Sub Stream: Manual set and default set.

Resolution:	<input type="text" value="1080P"/>
Frame Rate:	<input type="text" value="30 fps"/>
Bit Rate:	<input type="text" value="2 Mbps"/>
I-frame Interval(1-60):	<input type="text" value="30"/>
Quality:	<input type="text" value="Custom"/>
Bit Rate Control:	<input type="text" value="CBR"/>
Profile:	<input type="text" value="Main"/>

Save

Reset Default

Resolution:	<input type="text" value="360P"/>
Frame Rate:	<input type="text" value="30 fps"/>
Bit Rate:	<input type="text" value="512 Kbps"/>
I-frame Interval(1-60):	<input type="text" value="30"/>
Quality:	<input type="text" value="Custom"/>
Bit Rate Control:	<input type="text" value="CBR"/>
Profile:	<input type="text" value="Main"/>

Save

Reset Default

### OSD: on-screen display

Enable OSD:

Color Style:

Font Size:

Overlay Items:  Title  Resolution  Bitrate  
 Time  Week

Date Position:

Date Format:

Title Position:

Title Message:

### Privacy Mask: Able for 5 area set set.

#	Enable	Color	Draw Area
1	<input type="checkbox"/>	<input type="text" value="Black"/>	<input type="button" value="Draw Area"/>
2	<input type="checkbox"/>	<input type="text" value="Black"/>	<input type="button" value="Draw Area"/>
3	<input type="checkbox"/>	<input type="text" value="Black"/>	<input type="button" value="Draw Area"/>
4	<input type="checkbox"/>	<input type="text" value="Black"/>	<input type="button" value="Draw Area"/>
5	<input type="checkbox"/>	<input type="text" value="Black"/>	<input type="button" value="Draw Area"/>

### 6.5 Storage

Base Setting: Enable storage or not, allow overwrite or not, Max record time (minutes)

Enable Storage:

Allow Overwrite:

Max Record Time:  minutes

Record Schedule: Manual set and default set.

Enable Storage:

Video Stream:

With Audio:

Max Record Time:  minutes

Motion Detection: After detecting as set, it starts to record video.

Enable:

Video Stream:

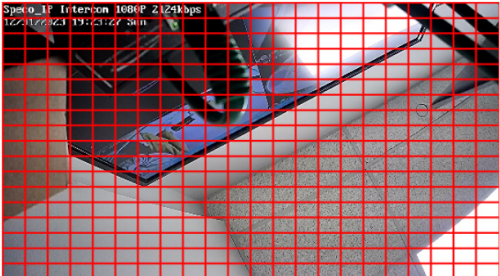
With Audio:

Pre-record:  s

Max Record Time:  s

Sensitivity:

Block Count:



Add motion area : Drag from left to right. Remove motion area: Drag from right to left

### SD Status

SD Card:

Device Status:

Total Size:

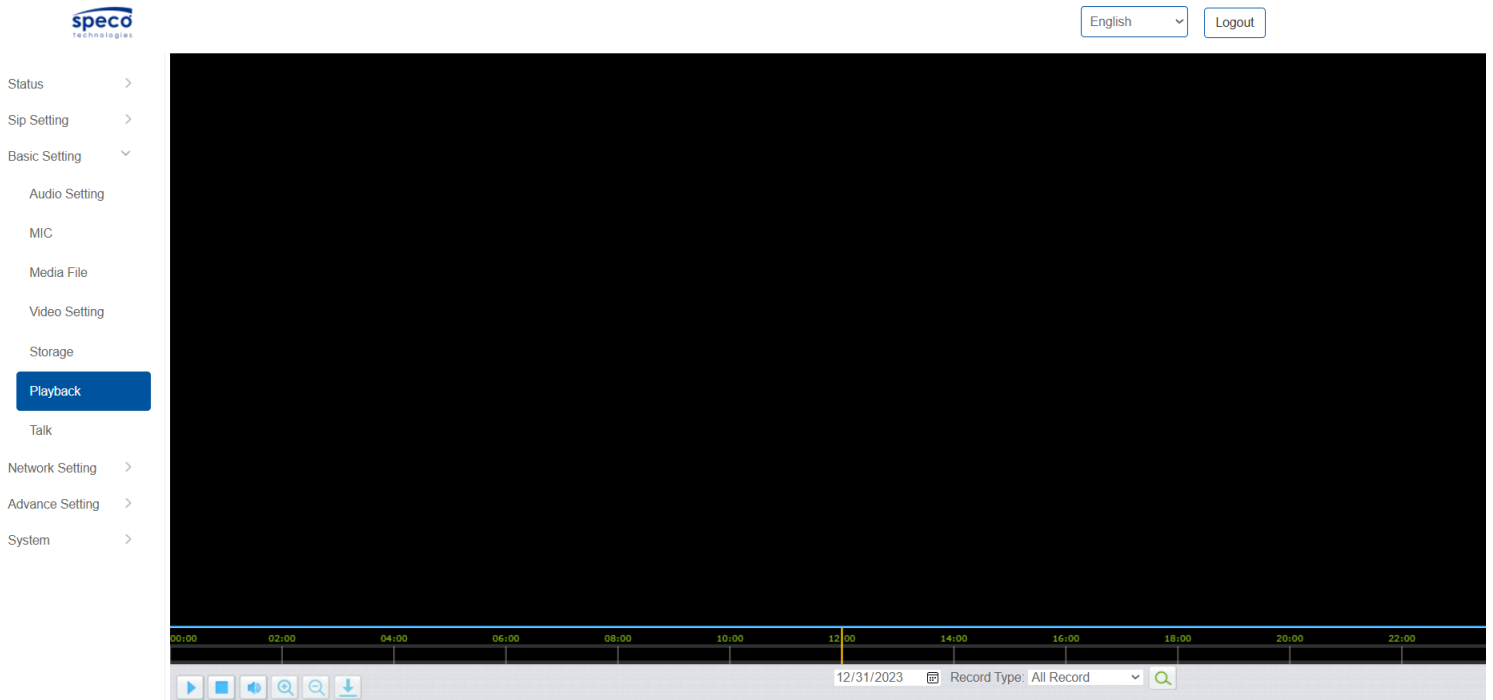
Used Size:

Free Size:

Used Percentage:

## 6.6 Playback

The SPIPIC allows you to save recorded footage, enabling you to playback and review it at your convenience. The playback feature displays a timeline where you can locate and watch specific recorded time periods highlighted in green below.



## 7. Network Setting

### 7.1 TCP/IP

DHCP: When you select DHCP and save the setting, IP address will be automatically assigned by a DHCP server. Afterward, you'll need to login again with the new IP address via your browser: 192.168.5.XXX.

Static IP Address: It is a default IP and will not be changed as following.



## 7.2 ONVIF

After selecting Enable ONVIF, the device will be discoverable by ONVIF VMS during the search process. Default user name: admin; Password: 1234.

- Status >
- Sip Setting >
- Basic Setting >
- Network Setting >
  - TCP/IP
  - ONVIF**
  - Firewall
- Advance Setting >
- System >

### ONVIF

ONVIF Enable


User Name

Password

**Save**

## 7.3 Firewall

This function is utilized to enhance your network security. You can customize the firewall's automatic defense rules according to your requirements, as follows.

English Logout

- Status >
- Sip Setting >
- Basic Setting >
- Network Setting >
  - TCP/IP
  - ONVIF
  - Firewall**
- Advance Setting >
- System >

### Firewall Rules

#	Name	Type	IP/MAC	Action
1				
2				
3				
4				
5				

### Automatic Defense Rules

#	Name	Protocol	Port Range	Rate	Action
1				0	
2				0	
3				0	
4				0	
5				0	

## 8. Advance Setting

### 8.1 Input

Input: Key; I/O In; SIP 1; SIP 2.

- Status >
- Sip Setting >
- Basic Setting >
- Network Setting >
- Advance Setting ▾
  - Input**
  - RTP Multicast
  - Schedule
  - Http URL
- System >

#### Input Settings

Input

File Enable

Sip Enable

Url Enable

Output Enable

Relay Enable

**Save**

- Status >
- Sip Setting >
- Basic Setting >
- Network Setting >
- Advance Setting ▾
  - Input**
  - RTP Multicast
  - Schedule
  - Http URL
- System >

#### Input Settings

Input

File Enable

Sip Enable

Url Enable

Output Enable

Relay Enable

**Save**

- Status >
- Sip Setting >
- Basic Setting >
- Network Setting >
- Advance Setting ▾
  - Input**
  - RTP Multicast
  - Schedule
  - Http URL
- System >

#### Input Settings

Input

Incoming Notify

Answer Notify

Close Notify

DTMF1 Enable

DTMF2 Enable

**Save**



### 8.3 Schedule

This function is widely use in school, factory and office projects. Making a regular bell, announcement and alarm.

Enable the schedule, you can name the schedule, then setting it step by step.

#	Name	Time	Action	File
1				
2				
3				
4				
5				
6				
7				
8				
9				
10				

### 8.4 Http URL

User can control the alarm by HTTP URL:

1. Enable the selection;
2. Open any browser you have in computer;
3. Put the URL as the following examples, enter it.

Status	>
Sip Setting	>
Basic Setting	>
Network Setting	>
Advance Setting	>
Input	
RTP Multicast	
Schedule	
Http URL	
System	>

#### Http Auth

Auth Type:

Save

#### Http URL

Play File Enable

Example1: <http://192.168.56.97/api/play?action=start&file=userfile1&mode=loop>

Example2: <http://192.168.56.97/api/play?action=start&file=userfile1&mode=once&volume=10>

Example3: <http://192.168.56.97/api/play?action=start&file=userfile1&mode=multiple&count=10&volume=20>

Example4: <http://192.168.56.97/api/play?action=start&file=userfile1&mode=duration&count=10&volume=30>

Example5: <http://192.168.56.97/api/play?action=stop>

Example6: <http://192.168.56.97/api/playringtone?action=start&value=440/2000,0/4000&duration=10&volume=>

Example7: <http://192.168.56.97/api/playringtone?action=stop>

Sip Call Enable

Example1: <http://192.168.56.97/api/sipcall?action=call&number=100&line=auto>

Example2: <http://192.168.56.97/api/sipcall?action=call&number=100&line=1>

Example3: <http://192.168.56.97/api/sipcall?action=hangup>

## 9. System

### 9.1 Date/Time

There are two update modes for time: NTP/local time. Please select one and configure the time zones accordingly. NTP sever and interval can choose default setting, then save the configuration.

Status >	<b>Date/Time</b>	
Sip Setting >	Device Time	12-31-2023 19:34:36
Basic Setting >	Update Mode	LocalTime <input type="text"/>
Network Setting >	LocalTime	04-03-2026 11:42:23
Advance Setting >	<input type="button" value="Save"/>	
System <input type="checkbox"/>		
<input type="button" value="Date/Time"/>		
Security		
Upgrade		

### 9.2 Security

Set a new user name and password as needed, save the configuration, and then restart the login process.

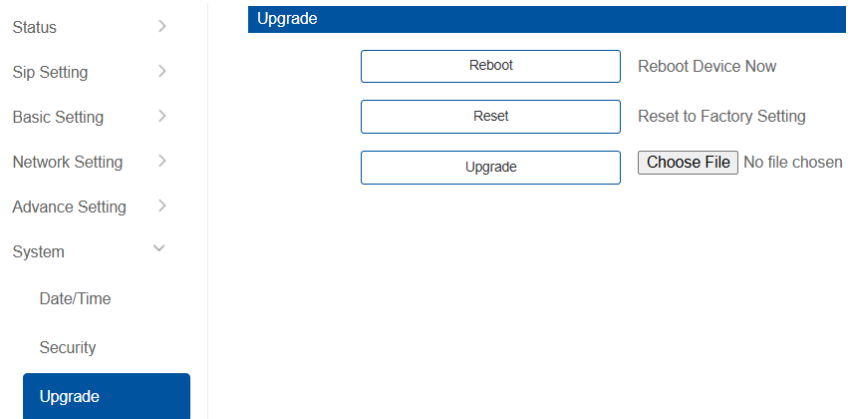
Status >	<b>Security</b>	
Sip Setting >	User Name	<input type="text"/>
Basic Setting >	Password	<input type="text"/>
Network Setting >	New User Name	<input type="text"/>
Advance Setting >	New Password	<input type="text"/>
System <input type="checkbox"/>	Confirm Password	<input type="text"/>
Date/Time	<input type="button" value="Save"/>	
<input type="button" value="Security"/>		
Upgrade		

### 9.3 Upgrade

When you reboot or reset the system, it will revert to its original settings, and you will need to log in to the web page again.

How to upgrade SPIPIC firmware version in web interface?

1. Select the latest version firmware
2. Click upgrade to refresh, it would require about 20s.
3. Re-login the web interface, latest version has upgraded.



## 8. Speco Audio Manager

In addition to Web configuration, IPTool provides another option for quickly configuring basic information such as SIP account settings, volume settings, RTP Multicast Settings, and upgrades. Below are the steps to follow:

1. Download Speco Audio Manager in <https://specotech.com/speco-audio-manager-download-form/>.
2. Enter Audio Manager, scan local network, the device will appear and then start setting.

Speco Audio Manager

Scan Device RTP Multicast Options

No.	Device Name	MAC	IP Address	Netmask	Gateway	SIP Account	RTP Multicast IP	Firmware Versio
1	ZS_SPIPC6AM	5c:f2:07:60:21:fe	192.168.56.127	255.255.255.0	192.168.56.1	zinsip@sip.linphon...		SPIP-V3.3.38
2	DASPIPH8AM	5c:f2:07:60:28:bc	192.168.56.149	255.255.255.0	192.168.56.1	6003@192.168.56....	239.255.255.1:5001	SPIP-V3.5.0
3	Speco_IP Intercom	5C:F2:07:60:2C:26	192.168.56.97	255.255.255.0	192.168.56.1			SPIP-V1.1.3

Current Device : Speco\_IP Intercom

1  6

2  7

3  8

4  9

5  10

Set Set All

