



Quick Start Guide

012B1M



Scan for Manual and Software downloads

Welcome

Thank you for purchasing this network camera!

This owner's manual is designed to be a reference tool for your system.

Please read this manual carefully before operating the unit and retain it for future reference.

Should you require any technical assistance, contact Speco Technologies Tech Support at 1-800-645-5516

Important Safeguards and Warning

1. Electrical safety

All installation and operation here should conform to local electrical safety codes.

Use a certified/listed 12VDC Class 2 power supply or adequate PoE switch.

Please note: The product must be grounded to reduce the risk of electric shock.

Improper handling and/or installation could run the risk of fire or electrical shock.

2. Environment

Do not expose the unit to heavy stress, violent vibration or long-term exposure to water and humidity during transportation, storage, and/or installation.

Do not install near sources of heat.

Only install the product in environments inside the specification operating temperature and humidity range.

Do not install the camera near power lines, radar equipment or other electromagnetic radiation.

Do not block any ventilation openings if any.

Use all the weatherproofing hardware requirement to minimize weather intrusion.

3. Operation and Daily Maintenance

Please shut down the device and then unplug the power cable before you begin any maintenance work.

Do not touch the CMOS sensor optic component. You can use a blower to clean the dust on the lens surface.

Always use a dry soft cloth to clean the device. If there is too much dust, use a cloth

dampened with a small quantity of neutral detergent. Finally use a dry cloth to clean the device.

Please use a professional optical cleaning method to clean the enclosure. Improper enclosure cleaning (such as using cloth) may result in poor IR functionality and/or IR reflection. The grounding holes of the product are recommended to be grounded to further enhance the reliability of the camera.

Warning

This camera should be installed by qualified personnel only.

All the examination and repair work should be done by qualified personnel.

Any unauthorized changes or modifications could void the warranty.

Statement

This guide is for reference only.

Product, manuals and specifications may be modified without prior notice. Speco Technologies reserves the right to modify these without notice and without incurring any obligation.

Speco Technologies is not liable for any loss caused by improper operation.

Note:

Before installation, check the package and make sure that all components are included. Contact your rep or Speco customer service department immediately if something is broken or missing in the package.

1 Package



Camera



Quick start guide



Screwdriver



Drill template



4 Screws
(6.5×38mm)



8 Plastic screw
anchors



4 Screws
(PM 4×10mm)



CVBS&DC
IN cables



4 Screws (PA 4×25mm)
1 Screw (PWM 3×5mm)



4 Rubber o-rings
for screws

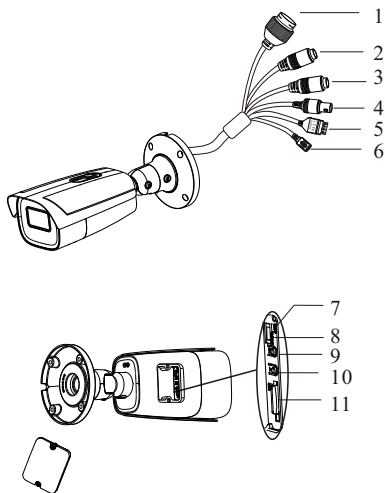


Junction box

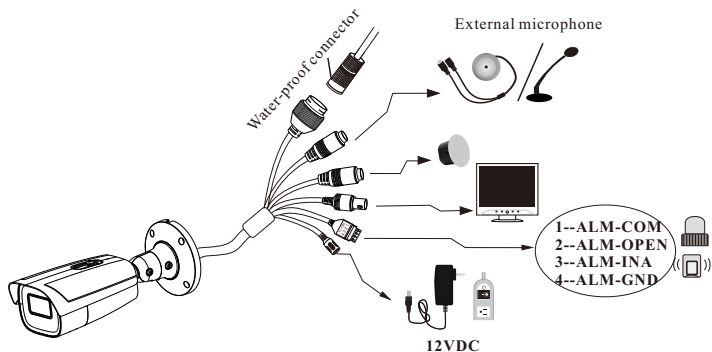


Water-proof
connector kit

2 Overview

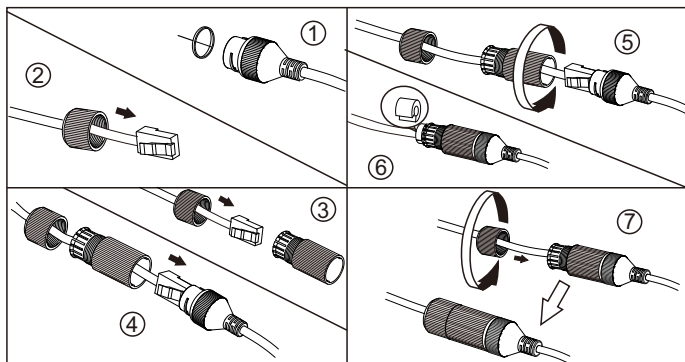


- 1 Ethernet Connector *
- 2 Audio Input (MIC)
- 3 Audio Output (HP)
- 4 CVBS Video Output
- 5 Alarm Input/Output
- 6 Power Connector *
- 7 Reset*
- 8 DC IN&CVBS Interface
- 9 Zoom -
- 10 Zoom +
- 11 Micro SD Card Slot
(support up to 512GB)



* It is recommended to install the water-proof connector for outdoor installations.

● Connecting Network Cable

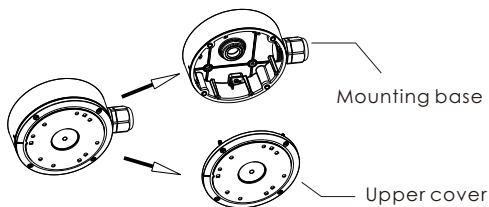


* If the RJ 45 connector of the network cable has a jacket and cannot be threaded through the kit, remove the jacket. If the jacket cannot be removed, cut off the connector and install an RJ 45 connector without the jacket.

3 Installation

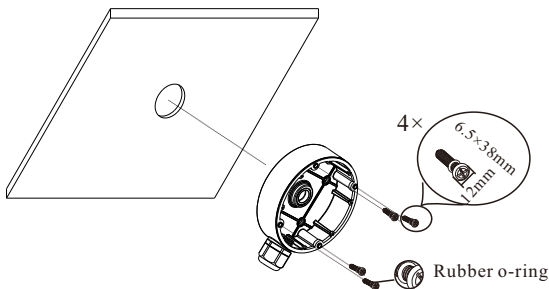
* Before you start, please make sure that the wall or ceiling is strong enough to withstand three times the weight of the camera.

- ① Open the mounting base and the upper cover of the junction box.

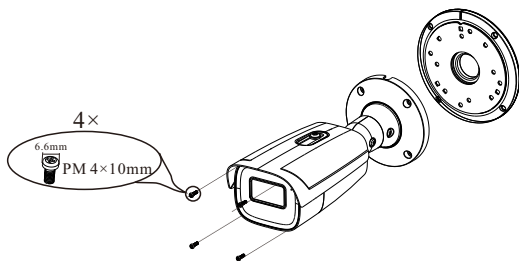


- ② Attach the drill template of the junction box to the place where you want to install the junction box and then drill the screw hole and cable hole on the wall according to the drill template.

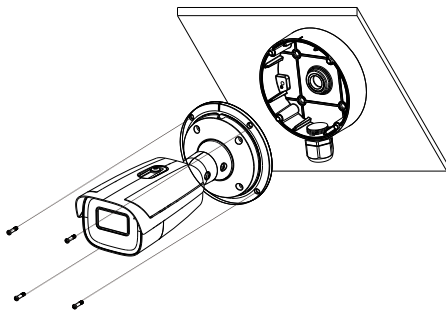
- ③ Install junction box onto the wall by using the screws provided.



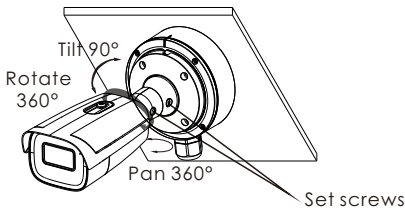
- ④ Fasten the mounting base of the camera to the upper cover of the junction box.



- ⑤ Route the cables through the cable hole and connect the camera. Then install the camera onto the mounting base of the junction box.



- ⑥ Three-axis Adjustment-Before adjustment, preview the image of the camera on a monitor and then loosen the set screws to adjust the camera according to the figure below to get an optimum angle.



4 Web Operation and Login

● Operation

- ① Make sure that the camera and the PC are connected to the same local network. The camera is set to DHCP by default.
- ② Install Speco Blue Scanner and run it after installation. Speco Blue Scanner is the tool for discover the IP cameras on the local network. It can be downloaded from www.specotech.com.
- ③ In the device list, you can view the IP address, model number, and MAC address of each device. Select the applicable device and double click to open up the web viewer. You can also manually enter the IP address in the address bar of the web browser .

A screenshot of a web login interface. At the top is a blue header with the 'speco technologies' logo. Below the header, on a light gray background, are two input fields: 'Username' and 'Password'. At the bottom are two buttons: 'Login' and 'Cancel'.

The login interface is shown above. Default user name is admin and password is 1234. After logging in, follow directions to install applicable plugins if prompted.