

Solar Panel Mounting Installation Guide

SXC200 | SXC300 | SXC400



Accessories



SPM-A-55 or SPM-A-42



SPM-C-35



SPM-A-32



Hose Clamps



SPM-LB-R



SPM-LB-L



SPM-LB-ENG

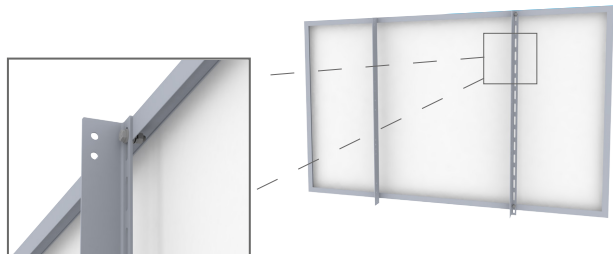


SXC200
SXC300
SXC400

ASSEMBLY

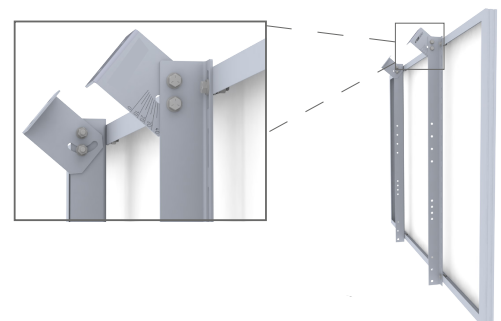
STEP 1

1. Mount the Long Rails (**SPM-A-55 or SPM-A-42**) to the Solar Panel using the existing holes on the rear of the panel.
2. Bolt 4 points per Solar Panel.
3. Max width between holes should be 38" (drilling may be required).



STEP 2

1. Panels should face directly south.
2. Attach the engraved SPM-LB-L-ENG and (1) SPM-LB-R to the SPM-A-55 or SPM-A-42 rails using the provided hardware.



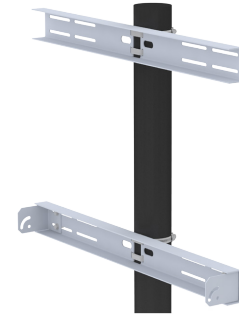
Install Guides

SXC200 | SXC300 | SXC400



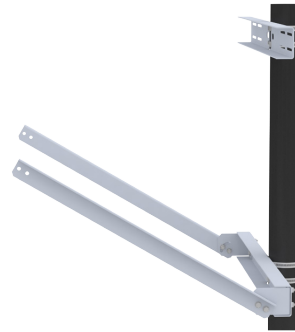
STEP 3

1. Attach the two SPM-C-35 channels to the pole using the provided hose clamps.
2. Tighten the hose clamps of the upper SPM-C-35 at the height the top of the solar panel will be mounted.
3. Leave the two lower hose clamps slightly loose so the lower SPM-C-35 can be adjusted later.
4. Attach the second pair of clips, SPM-LB-L and SPM-LB-R to the lower SPM-C-35.



STEP 4

1. Attach the two SPM-A-32 braces to the lower SPM-C-35.



STEP 5

1. Attach the solar panel assembly completed in step two, to the upper SPM-C-35.
2. Attach the SPM-A-32 braces to the appropriate holes in the SPM-A-55 or SPM-A-42 rails.
3. Check that the angle is correct and tighten all the bolts. To adjust the angle, loosen the appropriate bolts and hose clamps that hold the lower SPM-C-35.
4. Lower or raise the lower SPM-C-35 and re-tighten all hose clamps and bolts.



**CONNECT
WITH US
TODAY**

 1.800.645.5516

 SPECOTECH.COM

