



AUDIO **24** CATALOG vol. 63

Commercial & Residential Audio Products

Amplifiers, Speakers, & Accessories

Now available in IP, 70V, & 8 Ohms

speco
technologies

TABLE OF contents

| | | |
|----------|---|--|
| 2 | Speco Introduction | |
| 3 | What's New | |
| 4 | IP Audio | |
| 5-6 | Multiroom Audio | |
| 7 | Commercial PA Amplifiers | |
| 8 | Amplifier Technical Reference | |
| 9-10 | PBM-A Series Commercial Public Address Amplifier | |
| 11 | Commercial Public Address Amplifiers | |
| 12 | 160W Four Zone Commercial Matrix Amplifier | |
| 13 | 500W Commercial 70v Power Amplifier | |
| 14 | Seven Zone 260 Watt Commercial Public Address Amplifier | |
| 15-16 | UL Listed Contractor Series Amplifiers | |
| 17 | PVL Series Amplifiers | |
| 18 | 20 Watt Talk-Back Mobile Amplifier | |
| 19-20 | Megaphones | |
| 21 | Amplifier Reference Chart | |
| | Commercial Speakers | |
| 22 | IP Audio Speaker | |
| 23-24 | Nexus™ UL Contractor Series Speakers | |
| 25 | MA Outdoor Series Speakers | |
| 26 | MA Indoor Series Speakers | |
| 27-32 | 86 Series Contractor Speakers | |
| 33-37 | Specialty Commercial Speakers | |
| 38-40 | Indoor/Outdoor Commercial Speakers | |
| 41-42 | Mini Communication Speakers | |
| | Microphones | |
| 43 | Wireless Microphones | |
| 44-45 | Wired Microphones | |
| | Microphone Accessories | |
| 46 | Transformers | |
| | 12VDC Power Supply | |
| | Strobes | |
| | Audio Accessories | |
| 47 | HDMI® Cables | |
| 48 | HDMI® Accessories | |
| 49 | Audio Accessories | |
| | PA Horns | |
| 50-51,54 | 8 Ohms Horns | |
| 52-53 | 70V Horns | |
| 55 | Vertical Mount Horns | |
| | Sirens | |
| 56 | Horn Casings and Drivers | |
| | Amplified Horns | |
| 57 | DVR Audio Accessory Kits | |
| 58 | Amplified Weather-Resistant ABS P.A. Horn Speaker | |
| 59 | Commercial Volume Controls | |
| 60 | Residential Speakers | |
| 61-62 | Custom Series In-Ceiling Residential Speakers | |
| 63 | Contractor Series Enclosed In-Ceiling Residential Speakers | |
| 64 | Series 25 In-Ceiling Residential Speakers | |
| 65 | Contractor Elite Indoor/Outdoor Wall-Mount Residential Speakers | |
| | Audio Speaker Accessories | |
| 66 | Speaker Supports | |
| | Residential Volume Controls | |
| 67-72 | Commercial Audio Guide | |
| 73 | Warranty Information | |
| 74 | Glossary of Audio Terms | |
| 75 | Index | |

About us

While much has changed since we sold our first speaker in 1960, one thing has remained constant: customers want as much quality as possible for the lowest cost. Speco Technologies has built its business around a basic philosophy to manufacture high quality products that are packed with features. In fact, we are so confident in their quality that we offer the best warranties in the business for prices less than many other manufacturers. We put our 60+ years of experience into every product launch and strive to set the benchmark for affordable commercial and residential sound equipment. Our focus is on small- to mid-sized paging, background music, and foreground music installations, but our products are versatile enough to be used in almost any environment.

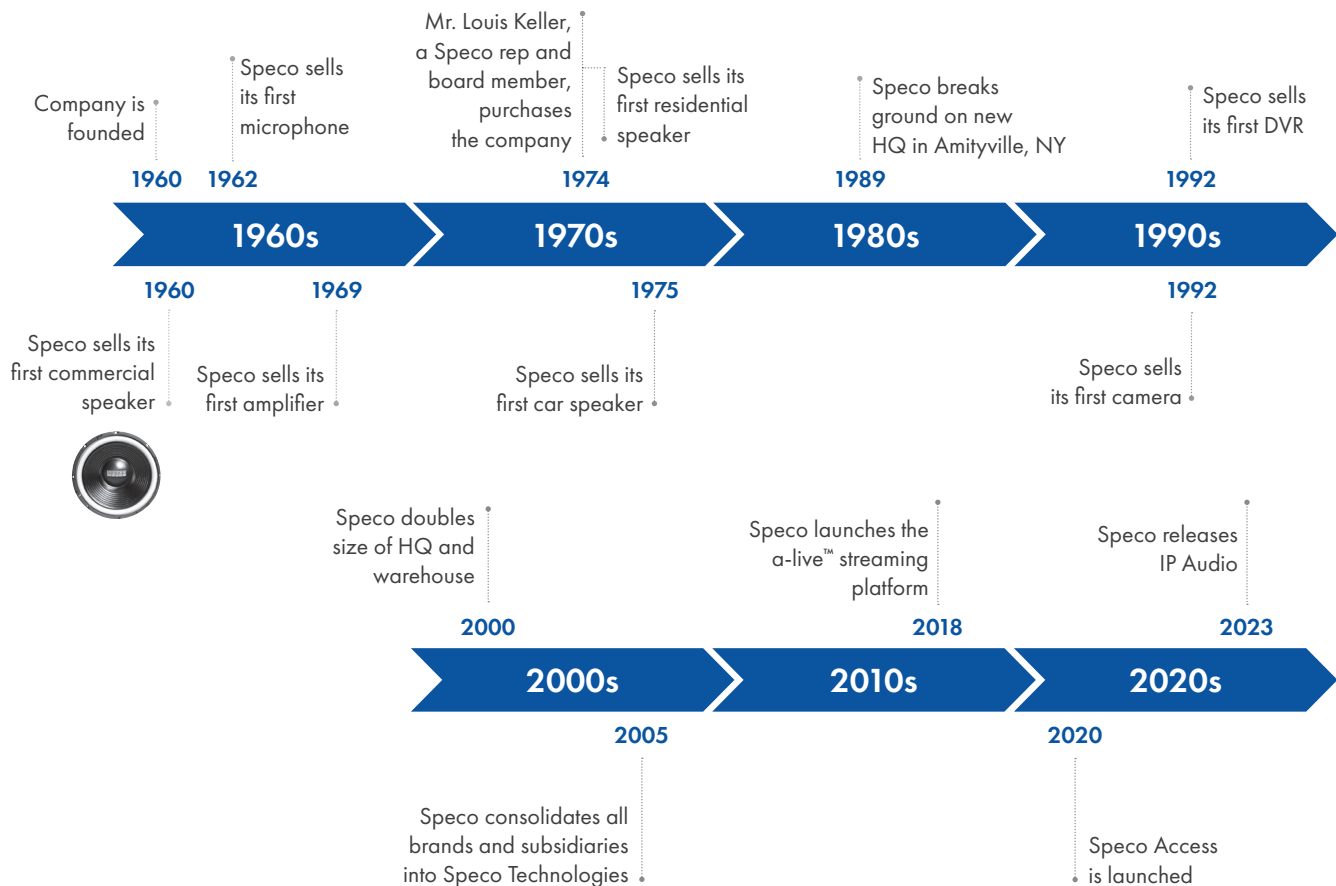
Not many companies stick around long enough to estimate that millions of their speakers have been

sold & installed worldwide, but it's thanks to our loyal customers over the years that Speco Technologies has become the company it is today. We plan to make the next 60 years even better and continue to grow. Convenience, quality, affordability, support and reliability. It's those 5 words that best describe who we are and what we can provide you in a combined package that few, if any, manufacturers can offer.

speco technologies®
Giving You More.

For those familiar with Speco Technologies, we thank you from the bottom of our hearts for your business and hope to continue to be your top choice for audio products. Speco has always been a family owned company, and we truly feel our customers are a part of our family. For those just meeting Speco Technologies today, we welcome you and urge you to reach out to us at any time with any questions you might have and we will do our best to let you know who we are and how we can help your business grow.

60+ Years of Quality Products and Services



WHAT'S NEW? IP AUDIO!



SIPIC6A

15W IP Ceiling Speaker

Features

- Works with Speco Audio Manager Software
- Compatible with SecureGuard® VMS via ONVIF
- Supports pre-recorded messages, schedules, and alarm trigger

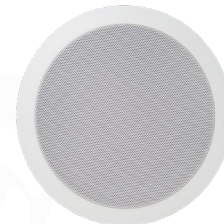


SIPPH8AM

15W IP Horn Speaker with Built-in Microphone

Features

- Works with Speco Audio Manager Software
- Compatible with SecureGuard® VMS via ONVIF
- Supports pre-recorded messages, schedules, and alarm trigger
- IP67 waterproof design is ideal for outdoor installations



SIPPG66T

6.5" IP Ceiling Speaker

Features

- Works with Speco Audio Manager Software
- Compatible with SecureGuard® VMS via ONVIF
- Supports pre-recorded messages, schedules, and alarm trigger



SIPIC6AM

15W IP Ceiling Speaker with Built-in Microphone

Features

- Works with Speco Audio Manager Software
- Compatible with SecureGuard® VMS via ONVIF
- Supports pre-recorded messages, schedules, and alarm trigger



SIPPH9AM

30W IP Horn Speaker with Built-in Microphone

Features

- Works with Speco Audio Manager Software
- Compatible with SecureGuard® VMS via ONVIF
- Supports pre-recorded messages, schedules, and alarm trigger
- IP67 waterproof design is ideal for outdoor installations



SIPPG86TG

8" IP In-Ceiling Steel Panel Speaker

Features

- Works with Speco Audio Manager Software
- Compatible with SecureGuard® VMS via ONVIF
- Supports pre-recorded messages, schedules, and alarm trigger

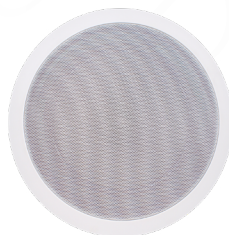


SIPPH8A

15W IP Horn Speaker

Features

- Works with Speco Audio Manager Software
- Compatible with SecureGuard® VMS via ONVIF
- Supports pre-recorded messages, schedules, and alarm trigger
- IP67 waterproof design is ideal for outdoor installations



SIPPG86T

8" IP In-Ceiling Steel Panel Speaker

Features

- Works with Speco Audio Manager Software
- Compatible with SecureGuard® VMS via ONVIF
- Supports pre-recorded messages, schedules, and alarm trigger



SIP200M

IP Audio Encoder

Features

- Turn your speakers into network IP Speakers
- Works with most 8 Ohm Speakers
- Supports Two-way communication

IP Audio Solutions to Help **YOUR** Business Thrive



What can Speco's IP Audio do for you?

Speco's IP Audio allows easy installation with a single network cable (PoE). These speakers offer a scalable system to build on with a sleek look and premium sound quality.

Take advantage of Two-way audio support on select models to speak to patrons in real time. Easily integrate audio with Speco's state-of-the-art video surveillance systems. All models are compatible with VoIP and SIP Devices (IPPBX, IP Phone) via SIP.



What are some ideal applications for Speco's IP speakers?

- Commercial settings: retail stores, restaurants, and hotels
- Residential settings: multi-family housing and apartments
- Educational settings: schools and universities

Control these speakers with Speco Audio Manager

With Speco Audio Manager software, conveniently unlock the full potential of IP audio with RTP multicasting, SIP Trunk capabilities, Multi-zoning, the ability to create schedules, stream live radio, and utilize the built-in bell feature. Access all of these great features with **NO LICENSING FEE!**





Multi-Room Audio Streaming

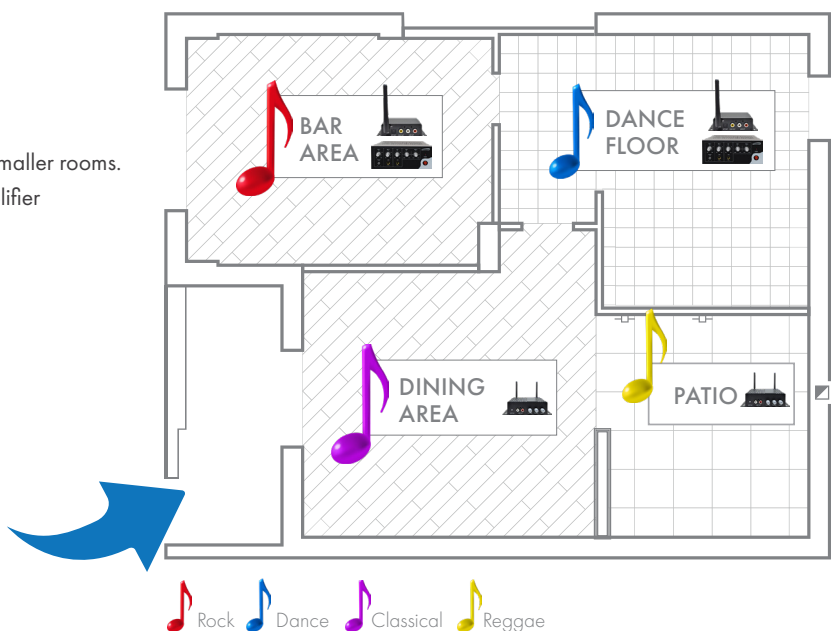
Residential Solution

- Fill up to 12 rooms in a home with music.
- Control all from the a-live app.
- Multiple users can access simultaneously.
- Use the AA1 with a couple of speakers for smaller rooms.
- Use the AS1 with a receiver or external amplifier to fill bigger rooms or the backyard.

Commercial Solution

- Play background music in up to 12 zones.
- Control all from the a-live app.
- Multiple users can access simultaneously, but only users with access to the wifi network can control the a-live units.
- Ideal for installations where different music could be played in different zones at the same time such as Gyms, Tanning salons, offices, and bars/restaurants (see example).

sample bar/restaurant installation:



Stream. Control. Entertain.

Small Room Solution

1-2 speakers

AA1

2x 80W Amplifier

The a-live™ AA1 is a two channel amp with built-in streaming capability. This unit is ideal in rooms where you only need a couple speakers

- 2x80W @ 8 ohms
- Control volume from unit or apps
- Bass & Treble controls
- Line input and output
- Stream some of the most popular music services



Large Room Solution

3 or more speakers

AS1

Multi-room Streamer Unit

The a-live™ AS1 can be connected to any amplifier or receiver and stream music to countless speakers to fill rooms of all sizes

- Line input and output
- Connected directly to an amplifier
- Stream some of the most popular music services



Bundle + Save!

AACEK1B = AA1+ SPCE50B (Page 63)

AACEK1W = AA1+ SPCE50W (Page 63)

Speco is now offering the

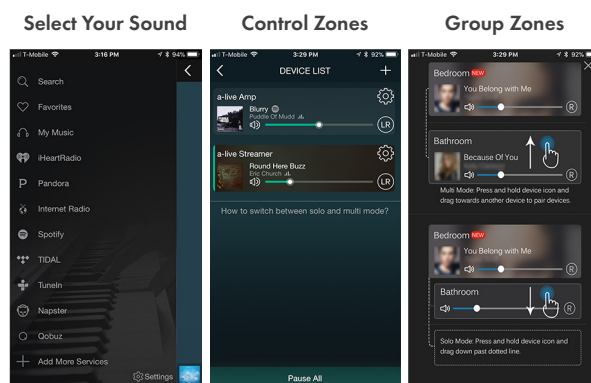
Ultimate Entertainment Solution!

Have full control through your mobile device as it streams music from different apps to multiple zones throughout an installation



Spotify®, Napster®, iHeart Radio®, and Tidal® names, logos, and brands are property of their respective owners. All company, product and service names used in this catalog are for identification purposes only. Use of these names, logos, and brands does not imply endorsement.

ASBPMK1 = AS1+ PBM120A (Page 7)



Screenshots from a-live™ app

Available in
the IOS App Store
& Google Play



GET IT ON
Google Play

Download on the
App Store

Commercial Audio

SEE PAGE 60 FOR RESIDENTIAL AUDIO



speco technologies
Giving You More.

Features:

PBM-A Series Commercial Public Address Amplifiers

The PBM-A Series represents the next generation of Speco Technologies' commercial public address amplifiers. We have taken customer input and created the perfect amplifier for almost any application. In addition to the great features you've come to expect, the PBM-A series has ample inputs, an included IR remote control, an RS232 input for integration with control systems, front panel locking capability, and includes all rack-mount hardware. With a stylish appearance and all these additional features at a price similar to previous generation amplifiers, the PBM-A series is sure to become your go-to unit.

PBM60A
PBM120A
PBM240A



P.A. Amplifier with AM/FM Tuner

PBM60AT
PBM120AT
PBM240AT



P.A. Amplifier with Tuner, CD and USB

PBM60AU
PBM120AU
PBM240AU



Rear View
For PBM60/120A



Rear View
For PBM240A



Amplifier Worksheet

Please reference commercial audio guide on page 10 for speaker wattage information.

Which Wattage Amplifier Do I Need?

Normally, to arrive at the necessary wattage requirement for an amplifier in a particular location, you will need to take the total sum of wattage you need, (considering all speakers, horns and their wattage tap settings) then add a 20 percent safety buffer. The worksheet to the right will aid in calculating this requirement.

Determining Your Amplifier Needs for Sound Systems

Step 1: Fill out Wattage Tap Requirement Chart (at right) to determine the number of speakers that will be used at each wattage tap for the amplifier.

Step 2: Multiply the number of speakers by each wattage tap to determine total wattage requirement per tap setting (See Example A).

Step 3: Add all the figures in the shaded area to determine the total wattage requirement for the amplifier.

Step 4: Match the total wattage requirement to the chart on the next page “Recommended Amplifier Wattage Chart” to determine acceptable RMS wattage the amplifier should have.

Step 5: Repeat this process for each amplifier system.

Wattage Tap Requirement Chart

| | Set Wattage Taps | × | Number of Speakers at Set Tap | = | Total Wattage Requirement per Tap |
|-----------|------------------|---|-------------------------------|---|-----------------------------------|
| Example A | 5 | x | 10 | = | 50W |
| | 60 | x | | = | |
| | 30 | x | | = | |
| | 20 | x | | = | |
| | 15 | x | | = | |
| | 10 | x | | = | |
| | 7.7 | x | | = | |
| | 5 | x | | = | |
| | 4 | x | | = | |
| | 3.75 | x | | = | |
| | 2.5 | x | | = | |
| | 2 | x | | = | |
| | 1.50 | x | | = | |
| | 1.25 | x | | = | |
| | 1.00 | x | | = | |
| | 0.50 | x | | = | |
| | 0.25 | x | | = | |
| | 0.125 | x | | = | |

| Noise Level | Decibel | Environment | Wattage Tap* |
|-------------|-----------|-------------------|--------------|
| Low | 55dB-64dB | Corporate Office | 0.25-2.5 |
| | | Doctor's Office | 0.5 |
| | | Classroom | 0.5-5 |
| | | Convenience Store | 1 |
| | | Department Store | 1-2.5 |
| Medium | 65dB-74dB | Restaurant | 2 |
| | | Warehouse | 2-10 |
| | | Hospital | 2-5 |
| | | Supermarket | 2-5 |
| High | 75dB-84dB | Bar | 5-20 |
| | | Factory | 7.5-40 |
| | | Assembly Line | 15-50 |
| Maximum | 85dB+ | Printing Press | 30+ |
| | | Metal Shop | 40+ |

*taps vary depending on ceiling height and ambient noise

Commercial Public Address Amplifiers

Speco Technologies Professional (P) series of amplifiers feature built-in sources and a wealth of inputs and outputs to serve as the ideal amplifier for a vast number of installations. This series offers a 60W model with a built in CD/tuner combo. This series can help save you money as the built-in sources not only conserve valuable installation and rack space by combining multiple units into one, but also are available at a price less expensive than buying components of this quality separately.

P60FACD

60W RMS P.A. Amplifier with Built-in AM/FM Tuner & MP3-Ready CD Player

Features:

- 4 zoned 70 or 25V speaker outputs
- AM/FM Tuner with 8-function CD player
- Telephone paging input and Music-on-hold output
- Individual volume control for each Mic input
- Front bass and treble controls
- Mic1 selectable priority paging
- UL & CSA listed



| Part Number | P60FACD | | |
|----------------------|--|----------------------|--|
| RMS Output Power | 60W | THD | Less than 1% @ 1kHz |
| Max Output Power | 90W | Signal/Noise Ratio | >70dB |
| AC Power Consumption | 170W | Controls | Volume for each Mic, Master Volume, Vox Volume, MoH Volume, Vox Selector, Tone, Source Selector, Zone Selector, Tuner and CD |
| Power Supply | AC 115V, 50Hz/60Hz | Telephone | TEL in and MoH Out |
| Zones | 4 | Indicators | Tuner, CD, power, power level |
| Speaker Outputs | 4/8/16 Ohms (non-zoned), 70/25V (zoned) | Dimensions | 16.9" (W) x 3.5" (H) x 11.6" (D) |
| Other Outputs | Aux (RCA) | Weight | 21.4 lbs. |
| Inputs | 1 x AM Antenna (Press terminal), 1 x FM Antenna (BNC), 1 x Aux (Stereo RCA), 4 x Mic (XLR), 1 x TEL (terminal) | Includes | Antenna |
| Frequency Response | 60Hz ~ 15kHz (±3dB) | Optional Accessories | PBMRK2 rack mounting kit |
| Tone Control | Bass ± 10dB, Treble ± 10dB | Listings | UL, cUL, CSA, CE, FCC |

160W Four Zone Commercial Matrix Amplifier

The PL200M offers a set of features very unique to the industry. As a Matrix amplifier, this advanced unit lets you route up to 5 separate inputs to 4 distinct zones, which allows simultaneous play of a different source in each zone. Assigning a source to a zone is as simple as pressing a button on the front panel and each source has its own separate gain, treble, bass and volume controls. A high degree of engineering went into this unit and it can accomplish in a very cost-effective manner what formerly required a high-end digital system or multiple amplifiers.

PL200M

Features:

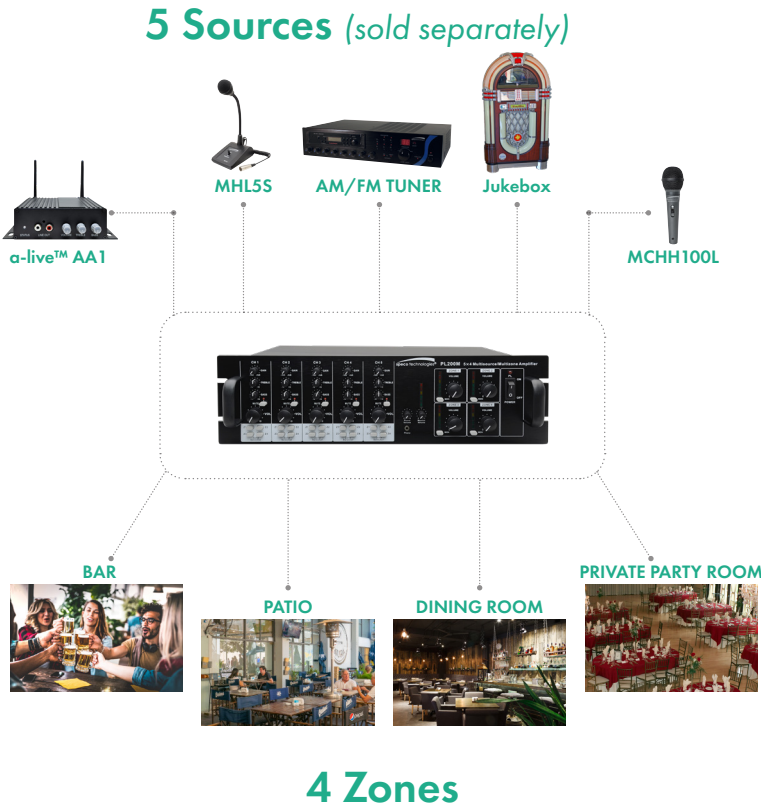
- Simultaneous playback of 5 sources in 4 zones
- 4 sets of 4/8 Ohms or 70/25V outputs
- Telephone paging interface and limited music on hold functionality via a monitor output
- Mic1 selectable priority paging with internal toggle
- Energy saving intelligent cooling fan
- Separate controls (gain, bass, treble, volume) and mute for each source
- Separate volume control and LED power indicator for each zone
- Rack-mount design with built-in handles (3U)
- 3 combination XLR/ 1/4" inputs with selectable phantom power, line level or mic level

Ideal for:

- Hotels
- Offices
- Funeral Homes
- Transit
- Bars/Restaurants
- Warehouse
- Tanning Salons
- Many more



| Part Number | PL200M |
|----------------------|--|
| RMS Output Power | 40W (Per zone for 160W total) |
| Max Output Power | 90W (Per zone for 360W total) |
| AC Power Consumption | 400W (total) |
| Power Supply | AC 115V/230V, 60/50Hz |
| Zones | 4 |
| Speaker Outputs | 4/8 Ohms, 70/25V (per zone) |
| Other Outputs | Aux (terminal) (per zone) |
| Inputs | 3 x Mic/Aux inputs (Combo XLR 1/4"), 2 x Aux (Stereo RCA), 1 x TEL (terminal) |
| Frequency Response | 50Hz ~ 17kHz (±3dB) |
| Tone Control | Bass ± 10dB, Treble ± 10dB |
| THD | Less than 0.5% @ 1kHz |
| Signal/Noise Ratio | Microphone: >55dB, Line: >60dB |
| Controls | Volume for each source, Volume for each zone, Volume for monitor, Volume for headphone, Zone selector for each source, Monitor selector for each zone, Input type selector |
| Telephone | TEL in and MoH Out |
| Indicators | Tuner, CD, power, power level |
| Dimensions | 16.9" (W) x 3.5" (H) x 11.6" (D) |
| Weight | 21.4 lbs. |
| Includes | Built-in rack mount |
| Listings | CE, FCC, RoHS |



500W Commercial 70V Power Amplifier

The P500A serves a very specialized role in Speco Technologies’ lineup of amplifiers: to work in conjunction with a mixer amplifier or preamplifier to significantly boost the power in any given installation and accommodate large numbers of commercial speakers. This amplifier utilizes Class D amplifier technology, which means it is extremely lightweight (18 lbs.) and runs very cool despite the high amount of power being sent to the speakers.

P500A

Features:

- Single speaker output works with either 70V or 8 Ohm speakers
- Auxiliary inputs and outputs to “daisy-chain” amplifiers
- Class D amplification
- Built-in rack mount



| Part Number | P500A | | |
|----------------------|---------------------------|--------------------|----------------------------------|
| RMS Output Power | 500W | THD | Less than 0.1% @1KHz |
| Max Output Power | 1000W | Signal/Noise Ratio | >90dB |
| AC Power Consumption | <720W | Controls | Master Volume |
| Power Supply | AC 110V-120V, 50/60Hz | Telephone | n/a |
| Zones | 1 | Indicators | Power, power level |
| Speaker Outputs | 8 Ohms, 70V | Dimensions | 19" (W) x 3.46" (H) x 15.75" (D) |
| Other Outputs | Aux (XLR) | Weight | 18 lbs. |
| Inputs | 1 x Aux (XLR or terminal) | Includes | Built-in rack mount |
| Frequency Response | 70Hz ~ 18kHz (±3dB) | Listings | CE, FCC, RoHS |
| Tone Control | n/a | | |

Seven Zone 260 Watt Commercial Public Address Amplifier

Speco Technologies’ Platinum 260 model (PL260A) delivers 260 Watts of RMS power while featuring seven 25 or 70V speaker zones. A 24 Volt battery backup input terminal delivers reassurance in the event of a power failure, protecting internal communications. Five XLR microphone connectors with individual phantom power switches and three auxiliary jacks offer ample inputs to cover almost any end user need.

PL260A

Features:

- Seven front-selectable 70/25V speaker zones
- 24 Volt input for emergency backup power
- Separate bass and treble controls
- Each XLR microphone input has a phantom power toggle
- Mic1 selectable priority paging

Ideal for most mid-sized commercial applications



| Part Number | PL260A | | |
|----------------------|---|----------------------|---|
| RMS Output Power | 260W | THD | Less than 1% @1kHz |
| Max Output Power | 390W | Signal/Noise Ratio | Microphone: >60dB, TEL: >60dB, Line: >70dB |
| AC Power Consumption | 1200W | Controls | Volume for each source, Master Volume, TEL Input Level, MoH Volume, Tone, Zone Selector, Phantom Power on/off |
| Power Supply | AC 117V, 60Hz, DC 24V, 12A | Telephone | TEL in and MoH Out |
| Zones | 7 | Indicators | Power, power level |
| Speaker Outputs | 4/8/16 Ohms (non-zoned), 70/25V (zoned) | Dimensions | 16.9" (W) x 3.5" (H) x 11.6" (D) |
| Other Outputs | Aux (Stereo RCA), Pre-Amp (RCA) | Weight | 29.2 lbs. |
| Inputs | 5 x Mic (XLR), 3 x Aux (Stereo RCA), 1 x EQ/Mix (RCA), 1 x TEL (terminal) | Optional Accessories | PBMRK2 rack mounting kit |
| Frequency Response | 50Hz ~ 15kHz (±3dB) | Listings | UL, cUL, CE, FCC, RoHS |
| Tone Control | Bass ± 10dB, Treble ± 10dB | | |

PMM120A • PMM60A • PBM30

| Part Number | PMM120A | PMM60A | PBM30 |
|----------------------|--|--|--|
| RMS Output Power | 120W | 60W | 30W |
| Max Output Power | 180W | 90W | 45W |
| AC Power Consumption | 850W | 670W | 500W |
| Power Supply | AC 120V, 50/60Hz | AC 120V, 50/60Hz | AC 120V, 50/60Hz |
| Zones | 1 | 1 | 1 |
| Speaker Outputs | 4/8/16 Ohms, 70/25V | 4/8/16 Ohms, 70/25V | 4/8/16 Ohms, 70/25V |
| Other Outputs | Tape (RCA), Booster (RCA), Pre-Amp (RCA) | Tape (RCA), Booster (RCA), Pre-Amp (RCA) | n/a |
| Inputs | 3 x Mic (XLR), 1 x Mic (XLR or terminal), 3 x Mic/Aux (terminal or Stereo RCA), 1 x EQ/Mix (RCA), 1 x TEL (terminal) | 3 x Mic (XLR), 1 x Mic (XLR or terminal), 3 x Mic/Aux (terminal or Stereo RCA), 1 x EQ/Mix (RCA), 1 x TEL (terminal) | 2 x Mic (terminal), 1 x Aux (Stereo RCA) |
| Frequency Response | 50Hz ~ 15kHz (±3dB) | 50Hz ~ 15kHz (±3dB) | 50Hz ~ 15kHz (±3dB) |
| Tone Control | Bass ± 10dB, Treble ± 10dB | Bass ± 10dB, Treble ± 10dB | Bass ± 10dB, Treble ± 10dB |
| THD | Less than 1% @ 1kHz | Less than 1% @ 1kHz | Less than 1% @ 1kHz |
| Signal/Noise Ratio | Microphone: >60dB, TEL: >60dB, Line: >70dB | Microphone: >60dB, TEL: >60dB, Line: >70dB | Microphone: >60dB, TEL: >60dB, Line: >70dB |
| Controls | Volume for each source, Master Volume, Vox Sensitivity, TEL Input Level, MoH Volume, Tone | Volume for each source, Master Volume, Vox Sensitivity, TEL Input Level, MoH Volume, Tone | Volume for each source, Tone, TEL Input Level |
| Telephone | TEL in and MoH Out | TEL in and MoH Out | TEL in and MoH Out |
| Indicators | Power, power level | Power, power level | Power |
| Dimensions | 16.9" (W) x 3.5" (H) x 11.8" (D) | 16.9" (W) x 3.5" (H) x 11.8" (D) | 10.75" (W) x 3.5" (H) x 9.5" (D) |
| Weight | 23.6 lbs. | 19 lbs. | 11.4 lbs. |
| Optional Accessories | PBMRK2 rack mounting kit | PBMRK2 rack mounting kit | PBMRK1 rack mounting kit |
| Listings | UL, cUL, CE, FCC | UL, cUL, CE, FCC | UL, cUL, CE, FCC |

Ideal for most commercial applications

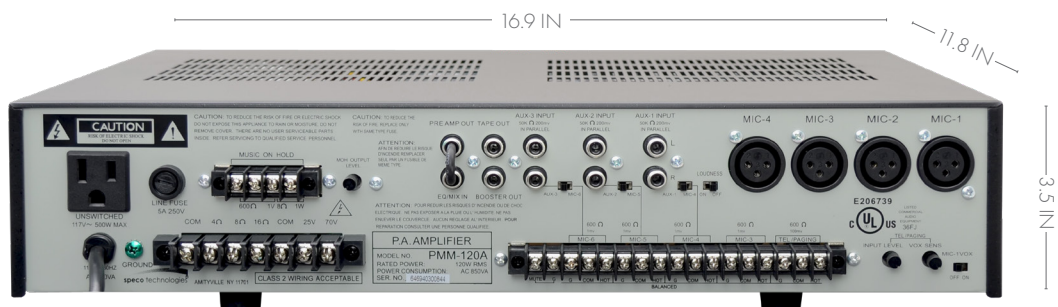


Contractor Series Amplifiers

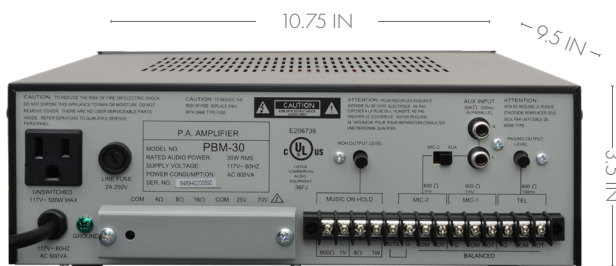
Speco Technologies' UL listed Contractor Series amplifiers are designed for long-running, every day use. They can stand on their own to run a smaller installation, or be incorporated into a much larger job. With RMS power ranging from 30W to 120W, microphone and source-mixing ability, telephone paging interface and music-on-hold capability, there's practically no job where one of these amplifiers wouldn't be a perfect fit!



PMM60A
PMM120A



PBM30



PVL Series Amplifiers

The PVL series from Speco Technologies offers features such as priority paging and multiple, easily accessible source inputs, at a very budget-friendly price. These amplifiers are perfect for small installations such as classrooms, retail shops, convenience stores, or for use with the Digital Deterrent® and two-way audio features incorporated into most of Speco Technologies’ DVRs/NVRs.

PVL15A

15W P.A. Mixer Amplifier



| Part Number | PVL15A |
|----------------------|--|
| RMS Output Power | 15W |
| Max Output Power | 30W |
| AC Power Consumption | 60W |
| Power Supply | AC 120V, 50/60Hz |
| Zones | 1 |
| Speaker Outputs | 4/8/16 Ohms, 70/25V |
| Inputs | 2 x Mic (1/4" and 1/4" or XLR) 1 x Aux (1/4") |
| Frequency Response | 50Hz ~ 15kHz |
| Tone Control | Bass ± 10dB, Treble ± 10dB |
| THD | Less than 0.1% @1kHz |
| Signal/Noise Ratio | Microphone: >75dB, Line: >80dB |
| Controls | Volume for each source, Tone, Priority |
| Telephone | No |
| Indicators | Power |
| Dimensions | 8.25" (W) x 3" (H) x 7.9" (D) |
| Weight | 8.4 lbs. |
| Listings | CE, FCC, RoHS |

- Features:**
- Mic1 priority mute function with front button
 - Separate bass and treble controls

- Ideal for:**
- Classrooms
 - Conference Rooms
 - Small Retail
 - Small Restaurant



20 Watt Talk-Back Mobile Amplifier

The PAT20TB is an invaluable amplifier for mobile and other applications. With this amp, you can talk through the included push-to-talk microphone into an installed speaker (not included), and when finished hit the "Talk Back" button on the front panel and someone on the other end of the system can use the installed speaker as a microphone for the original user to listen through. Schools, law enforcement, armored cars and commercial or private boats of all kinds are just a few of the potential users.

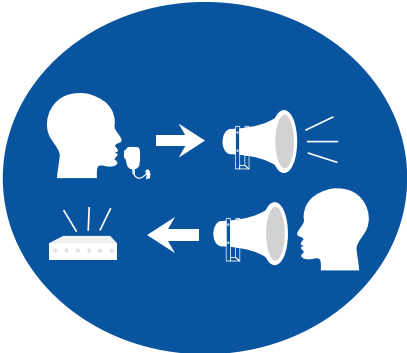
PAT20TB

Features:

- Talk-back feature turns a remote speaker (not included) into a listening device for two-way conversations
- Includes push to talk handheld "CB" style microphone (Replacement part# PAT20TBMIC)
- Includes mounting hardware



| Part Number | PAT20TB |
|----------------------|---|
| RMS Output Power | 12W |
| Max Output Power | 20W |
| AC Power Consumption | n/a |
| Power Supply | DC 11V to 16V |
| Zones | 1 |
| Speaker Outputs | 4/8 Ohms |
| Inputs | 1 x Mic (1/4"), 1 x Aux (1/4") |
| Frequency Response | 50Hz ~ 20kHz (±3dB) |
| Tone Control | Up to +10kHz |
| THD | Less than 0.5% @1kHz |
| Signal/Noise Ratio | Microphone: >65dB Line: >70 dB |
| Controls | Volume for each source, Tone, Talk-back |
| Indicators | Power |
| Dimensions | 5.1" (W) x 1.25" (H) x 4.5" (D) |
| Weight | 2 lbs. |
| Includes | Microphone |
| Optional Accessories | PAT20TBMIC replacement microphone |
| Listings | CE, FCC, RoHS |



Deluxe Megaphone with Siren

Speco Technologies has long been in the megaphone business and the ER370 has established a reputation in the industry as a fantastic sounding megaphone for a great price. Used by everyone from rock stars, gym coaches, movie directors to law enforcement/emergency workers & political organizers. The ER370 is one of the loudest and most popular megaphones in the industry.

ER370 (red /off white)

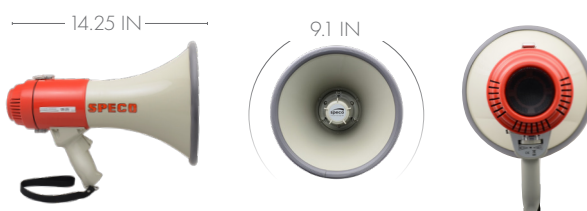
ER370B (matte black)

Features:

- Powerful solid state megaphone
- Built-in selectable electronic alarm siren
- Pistol grip
- Press-to-talk switch
- Volume control
- Durable weather-resistant construction
- Operates on 8 "C" cell batteries (not included)
- Includes shoulder strap



| Part Number | ER370/ER370B |
|------------------------|---|
| Max Output Power | 16W |
| Effective Range | Up to 800 feet |
| Batteries | 8 x "C" type (not included) |
| Estimated Battery Life | 4 hours of normal use |
| Speaker Impedance | 8 Ohms |
| Controls | Push-to-talk, volume, siren/talk toggle |
| Dimensions | 9.1" (Bell Dia.) x 14.25" (D) |
| Weight | 3.25 lbs. (without batteries) |
| Includes | Shoulder strap |



Deluxe Megaphone with Siren, USB/SD Player and Recording/Playback

Speco Technologies has long been in the megaphone business and have established a reputation in the industry for fantastic sounding megaphones at a great price. Used by everyone from rock stars, gym coaches, movie directors to law enforcement/emergency workers & political organizers, Speco manufactures some of the loudest and most popular megaphones in the industry.

ER390UMB

Features:

- Detachable microphone
- Built-in music player (SD/USB)
- Record and playback function lets you record up to a 10-second message and play back using the trigger
- Lightweight and portable, with clear sound
- Perfect for talk or speech at meetings, assemblies, rallies, movie/TV sets, sporting events/practice, etc
- Pistol Grip with talk switch and siren
- Microphone Volume Control
- ABS Plastic Construction with black rubber coating
- Includes shoulder strap



| Part Number | ER390UMB | | |
|------------------------|-----------------------------|------------|--|
| Max Output Power | 20W | Controls | Push-to-talk, volume, music player, recording and playback |
| Effective Range | Up to 1000 feet | Dimensions | 9.1" (Bell Dia.) x 15.25" (D - with microphone mounted) |
| Batteries | 8 x "C" type (not included) | Weight | 2.2 lbs. (without batteries) |
| Estimated Battery Life | 4 hours of normal use | Includes | Shoulder strap, microphone |
| Speaker Impedance | 8 Ohms | | |

Amplifier Reference Chart

| Features & Specifications | P500A | PL260A | PL200M | PBM60AU/ PBM120AU | PBM60AT/ PBM120AT | PBM60A/ PBM120A | PMM120A | PBM240A | PBM240AT | PBM240AU | PMM60A | P60FACD | PBM30 | PAT20TB | PVL15A |
|---------------------------------|----------------|--------------|----------------|----------------------|----------------------|--------------------|--------------|--------------|--------------|--------------|--------------|--------------|--------------|----------------|----------------|
| RMS Watts | 500 | 260 | 160 | 60 / 120 | 60 / 120 | 60 / 120 | 120 | 240 | 240 | 240 | 60 | 60 | 30 | 20 | 15 |
| UL Listed | | X | | | | | X | | | | X | X | X | | |
| Total Possible Mic/Aux Inputs* | 1 | 7 | 5* | 6 | 6 | 6 | 6* | 6 | 6 | 6 | 6* | 5 | 3 | 2 | 3 |
| Total Possible Mics | | 5 | 3 | 3 | 3 | 3 | 6 | 3 | 3 | 3 | 6 | 4 | 2 | 1 | 2 |
| Mic Strip Terminals | | | | | | | 2 | | | | 2 | | 2 | | |
| XLR Connectors | | 5 | 3 | 3 | 3 | 3 | 4 | 3 | 3 | 3 | 4 | 4 | | | 1 |
| 1 / 4" Connectors | | | 3 | | | | | | | | | | | | 1 |
| Total Possible Aux | 1 | 3 | 5* | 3 | 3 | 3 | 3 | 3 | 3 | 3 | 3 | 1 | 1 | 1 | 1 |
| 1 / 4" Aux Connector | | | 3 | | | | | | | | | | | | 1 |
| RCA Connectors (Stereo Pair) | | 3 | 2 | 3 | 3 | 3 | 3 | 3 | 3 | 3 | 3 | 1 | 1 | 1 | |
| XLR Connectors | 1 | | 3 | | | | | | | | | | | | |
| Telephone Paging (600 Ohm) | | X | X | X | X | X | X | X | X | X | X | X | X | | |
| 70 / 25V Outputs | 70V | X | X | X | X | X | X | 70V | 70V | 70V | X | X | X | | X |
| 4 / 8 / 16 Ohms Outputs | 8 | X | X | X | X | X | X | 4 and 8 | 4 and 8 | 4 and 8 | X | X | X | 4 and 8 | 4 and 8 |
| Music-On-Hold Output | | X | X | X | X | X | X | X | X | X | X | X | X | | |
| Aux Output | XLR | RCA | Terminal | XLR/RCA | XLR/RCA | XLR/RCA | RCA | XLR/RCA | XLR/RCA | XLR/RCA | RCA | RCA | | | |
| Speaker Zones | 1 | 7 | 4 Matrix | 5 | 5 | 5 | 1 | 5 | 5 | 5 | 1 | 4 | 1 | 1 | 1 |
| Priority Paging | | X | X | X | X | X | X | X | X | X | X | X | X | | X |
| Frequency Response (+3Db) | 70Hz ~ 18KHz | 50Hz ~ 15KHz | 50Hz ~ 17KHz | 50Hz ~ 20KHz | 50Hz ~ 20KHz | 50Hz ~ 20KHz | 50Hz ~ 15KHz | 50Hz ~ 20KHz | 50Hz ~ 20KHz | 50Hz ~ 20KHz | 50Hz ~ 15KHz | 60Hz ~ 15KHz | 50Hz ~ 15KHz | 50Hz ~ 20KHz | 50Hz ~ 15KHz |
| THD @ 1kHz | Less than 0.1% | Less than 1% | Less than 0.5% | Less than 1% | Less than 1% | Less than 1% | Less than 1% | Less than 1% | Less than 1% | Less than 1% | Less than 1% | Less than 1% | Less than 1% | Less than 0.5% | Less than 0.1% |
| AM / FM Tuner | | | | X | X | | | X | X | X | | X | | | |
| Mp3-Capable CD Player | | | | X | | | | | | | | X | | | |
| USB MP3 | | | | X | | | | | | | X | | | | |
| Separate Bass / Treble Controls | | X | X | X | X | X | X | X | X | X | X | X | X | X | X |
| Separate Mic Volume Controls | | X | X | X | X | X | X | X | X | X | X | X | X | X | X |
| Master Volume | X | X | X | X | X | X | X | X | X | X | X | X | | | |
| Rock Mount | Included | PBMRK2 | Built-in | Included | Included | Included | PBMRK2 | Included | Included | Included | PBMRK2 | PBMRK2 | PBMRK1 | Surface Mount | No |
| IR Remote Control | | | | X | X | X | | X | X | X | | | | | |
| RS232 | | | | X | X | X | | X | X | X | | | | | |

IP Audio Speakers

Speco's IP Audio allows easy installation with a single network cable (PoE). These speakers offer a scalable system to build on with a sleek look and premium sound quality. Take advantage of two-way audio support on select models to speak to patrons in real time. Easily integrate audio with Speco's state-of-the-art video surveillance systems. All models are compatible with VoIP, SIP Devices (IPPBX, IP Phone) via SIP.

SIPPC6A 15W IP Ceiling Speaker

SIPPC6AM 15w IP Ceiling Speaker with Built-In Microphone

SIPPH8A 15W IP Horn Speaker

SIPPH8AM 15W IP Horn Speaker with Built-In Microphone

SIPPH9AM 30W IP Horn Speaker with Built-In Microphone

Features:

- Works with Speco Audio Manager software
- IP Horn Speakers may be used for Indoor & Outdoor usage
- IP Ceiling Speakers may be used for Indoor usage only
- Supports pre-recorded messages, schedules, and alarm trigger using SecureGuard® software
- PoE or 12/24VDC



All speakers sold individually

| Part Number | SIPPC6A SIPPC6AM | SIPPH8A SIPPH8AM | SIPPH9AM |
|--------------------------|--|--|--|
| Codec | OPUS 48kHz, MP3 44.1kHz, G.722 ADPCM 16kHz, G.711 PCMU 8kHz, G.711 PCMA 8kHz | OPUS 48kHz, MP3 44.1kHz, G.722 ADPCM 16kHz, G.711 PCMU 8kHz, G.711 PCMA 8kHz | OPUS 48kHz, MP3 44.1kHz, G.722 ADPCM 16kHz, G.711 PCMU 8kHz, G.711 PCMA 8kHz |
| Max Sound Pressure Level | 96dB | 113dB | 120dB |
| Frequency Response | 100Hz~18kHz | 300Hz~8kHz | 350Hz~8kHz |
| Harmonic Distortion | 0.1% @1kHz | 0.1% @1kHz | 0.1% @1kHz |
| Signal to Noise Ratio | 91dB | 91dB | 91dB |
| Rate Power | 15W | 15W | 30W |
| Power Supply | PoE or 12-24V | PoE or 12-24V | PoE or 12-24V |
| Dimensions | 7.9" (Dia.) x 3.5" (D) | 8.86" (W) x 6.5" (H) x 9.45" (D) | 11.2" (W) x 8.07" (H) x 11.5" (D) |
| Built-in MIC | SIPPC6A: No SIPPC6AM: Yes | SIPPH8A: No SIPPH8AM: Yes | Yes |
| Operating Temperature | -22 °F - 140 °F | -22 °F - 140 °F | -22 °F - 140 °F |
| Operating Humidity | 5% - 85% | 5% - 85% | 5% - 85% |
| Weight | 2.87 lbs | 2.87 lbs | 4.40 lbs |
| Material | Metal | ABS (IP67 waterproof) | ABS (IP67 waterproof) |
| Color | White | White | White |



In-Ceiling Speakers

By far our most popular style, in-ceiling speakers are designed to be installed in a drop-ceiling to distribute clear, intelligible and concise background music, tones and pages. We are so confident in the quality and construction of our indoor speakers that each **and every one is backed by a LIFETIME WARRANTY**. The chart below should help you decide which model best suits your needs and budget:

N | E | X | U | S™ Contractor Series

Nexus is all about convenience and designed to be the center point of your installation. These speakers are made of quality materials and sold in pairs, including the mounting brackets. The real benefit of our Nexus line of speakers is that they are UL listed to meet codes in the areas that require it. [page 22](#)



SP6NXCTUL



MA SERIES

These speakers live up to their name as they are great for multiple applications in both commercial and residential environments. They are priced to fit into most budgets, but don't sacrifice sound quality to do it. The MA series of speakers is easily our most popular and is the perfect speaker for an installer to keep in the truck just in case you "need a speaker." [page 24](#)



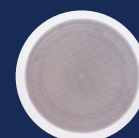
SP6MAT

86 SERIES

This is the speaker that brought Speco Technologies to the forefront of the commercial audio business and it's still going strong today. With 11 budget-friendly variations to choose from, the 86 Series has a look and function to fit any installer's need. Starting on [page 26](#)



G86TG



SPG86T



WB86T

NEXUS™ UL® Contractor Series Speakers

Our Nexus Contractor (NXC) Series commercial line of speakers utilizes premium components to provide a network of sound and paging for even the most demanding commercial environments. The high-end NXC Series features heavy-duty, industrial metal backcans that provide component protection and safety while enhancing the speakers' full-range bass sound. Removable "quick-snap" connection terminals provide easy access and optimal angles for connecting speaker wire. A wattage selector dial simplifies transformer settings. Mounted security loops allow for a support cable run to provide additional installation security. Also, these speakers are sold in kits that include a pair of speakers and ceiling support brackets. Most importantly, the 6.5" models have met or passed the strict UL1480 and UL2043 requirements for fire safety.

All speakers sold in pairs with mounting brackets

SP6NXCTUL

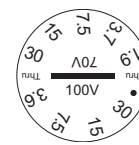


Features:

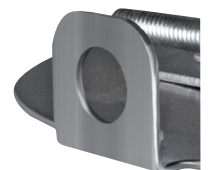
- Easy select transformer dial
- Fire retardant metal backcan
- Safety loop for additional mounting security
- Ported bass
- Quick-snap connection terminals
- Includes mounting brackets



| Part Number | SP6NXCTUL |
|--------------------------|--|
| RMS Power | 60W |
| Max Power | 120W |
| Transformer Type | 70V |
| Transformer Power Taps | 30W, 15W, 7.5W, 3.7W, 1.9W & 8 Ohms |
| Termination Type | Phoenix Connector |
| Sensitivity (1W/1M) | 87dB |
| Maximum SPL (Pmax / 1m) | 97dB |
| Driver Impedance | 8 Ohms |
| Magnet | 12 oz. Ferrite |
| Frequency Response Range | 60Hz ~ 20kHz |
| Dispersion @ 1000Hz | 110° Conical |
| Driver | 6.5" Polypropylene woofer, 0.75" Silk tweeter |
| Speaker Dimensions | 10.25" (Dia.) x 7.75" (D) |
| Mounting Dimensions | 8.75" (Dia.) |
| Minimum Mounting Depth | 7.5" |
| Weight | 9.8 lbs. |
| Material | Baffle: Fire-resistant ABS Backcan: Heavy Gauge Plated Steel Grille: Steel |
| Color | White |
| UL Rating | UL1480 and UL2043 |



Terminals



Safety Loop



Fire Retardant Backcan



Quick - Snap Terminal



Mounting Brackets



Ported Bass

MA Outdoor Series Speakers

Speco Technologies Multi-Application (MA) Series was designed to make the contractor's work as easy and time-efficient as possible. The SP6OCT was designed to be used in damp, humid or wet environments such as bathrooms, backyard overhangs, pools, and more. Our all-in-one unit comes pre-assembled with an ABS backcan and a mounted transformer. It features an easy select transformer wattage dial. The choice of 8 or 9 individual wattage tap settings covers a complete range of installations. The MA Series is the ideal, all-purpose value speaker covering a wide range of commercial sound applications. Plus, the furnished 8 Ohm setting means this speaker can also be kept on hand for residential installation needs.

SP6OCT

6.5" Weather-Resistant In-Ceiling Speaker with Backcan and Transformer

Features:

- Manufactured for indoor or outdoor use
- Magnetic grille makes installations quick and easy
- IP66 compliant, weather resistant
- 5 year warranty



MA
S E R I E S
OUTDOOR

| Part Number | SP6OCT | | |
|------------------------|---------------------|--------------------------|--|
| RMS Power | 20W | Frequency Response Range | 140Hz - 20kHz |
| Max Power | 40W | Dispersion @ 1000Hz | 170° |
| Transformer Type | 70V | Driver | 6.5" polypropylene cone, rubber edge woofer, .5" mylar coaxial tweeter |
| Transformer Settings | 20W, 10W, 5W, 8Ohms | Speaker Dimensions | 9.76" (D) x 6.3" (H) |
| Sensitivity (1W/1M) | 87dB | Cutout Dimensions | 8.2" |
| Maximum SPL (Pmax /1m) | 100dB | Speaker Weight | 4.3 lbs |
| Driver Impedance | 8 Ohms | Speaker Body Material | ABS |
| Magnet | Ferrite, 10.1 oz | Speaker Grille Material | Coated steel |

MA Indoor Series Speakers



Speco Technologies Multi-Application (MA) Series was designed to make the contractor's work as easy and time-efficient as possible. Our all-in-one unit comes pre-assembled with an ABS backcan and a mounted transformer. It features a quick-flip 25 or 70 Volt selector switch and an easy select transformer wattage dial. The choice of 8 or 9 individual wattage tap settings covers a complete range of installations. The MA Series is the ideal, all-purpose value speaker covering a wide range of commercial sound applications. Plus, the furnished 8 Ohm setting means this speaker can also be kept on hand for residential installation needs.

SP5MAT SP6MAT SP5MATB SP6MATB SP6MAWT



SP5MAT
SP6MAT



SP5MATB
SP6MATB



SP6MAWT

Features :

- ABS flame retardant backcan
- Easy select transformer dial
- 25V or 70V selector switch
- Safety loop for additional mounting security
- Ported bass
- Optional mounting brackets: 5" Models: BRC6F, 6" Models: BRC8F

All speakers sold individually

| Part Number | SP5MAT/SP5MATB | SP6MAT/SP6MATB | SP6MAWT |
|--------------------------|--|--|--|
| RMS Power | 30W | 40W | 40W |
| Max Power | 60W | 80W | 80W |
| Transformer Type | 70/25V (Selectable) | 70/25V (Selectable) | 70/25V (Selectable) |
| Transformer Power Taps | 30W, 15W, 7.5W, 2.5W, 1W, 0.5W, 0.25W & 8 Ohms | 40W, 30W, 15W, 7.5W, 5W, 2.5W, 1W, 0.5W, 0.25W & 8 Ohms | 40W, 30W, 15W, 7.5W, 5W, 2.5W, 1W, 0.5W, 0.25W & 8 Ohms |
| Termination Type | Press terminal | Press terminal | Press terminal |
| Sensitivity (1W/1M) | 87dB | 88dB | 89dB |
| Maximum SPL (Pmax /1m) | 91.4dB | 92.3dB | 106dB |
| Driver Impedance | 8 Ohms | 8 Ohms | 8 Ohms |
| Magnet | 10 oz. Ferrite | 11.6 oz. Ferrite | 10 oz. Neodymium |
| Frequency Response Range | 57Hz ~ 20kHz | 34Hz ~ 20kHz | 50Hz ~ 20kHz |
| Dispersion @ 1000Hz | 120° Conical | 120° Conical | 120° Conical |
| Drivers | 5.25" Polypropylene woofer 1" Mylar tweeter | 6.55" Polypropylene woofer 1" Mylar tweeter | 6.5" Fiberglass woofer, 1" Titanium tweeter |
| Speaker Dimensions | 9.43" (Dia.) x 6.12" (D) | 11.02" (Dia.) x 7.58" (D) | 8.63" (W) x 12" (H) x 4.25" (D) |
| Mounting Dimensions | 8.38" (Dia.) | 9.88" (Dia.) | 7.5" (W) x 10.75" (H) |
| Minimum Mounting Depth | 5.6" | 7" | 4.13" |
| Weight | 4.5 lbs. | 5.5 lbs. | 5.5 lbs. |
| Material | Baffle: Fire-resistant ABS Backcan: Fire-resistant ABS Grille: Metal | Baffle: Fire-resistant ABS Backcan: Fire-resistant ABS Grille: Metal | Baffle: Fire-resistant ABS Backcan: Fire-resistant ABS Grille: Metal |
| Color | Off-White or Black (B) | Off-White or Black (B) | Off-White |
| Mounting Bracket | BRC6F (Sold in pairs - not included) | BRC8F (Sold in pairs - not included) | n/a |



ABS Flame Retardant Backcan



EZ Select Transformer Dial



25V or 70V Selector Switch



Safety Loop



Ported Bass

86 Series Contractor Speakers

Speco Technologies 86 Series started with the G86TG and has branched into an entire line of high-quality, great-priced speakers. The SPG6MT is the latest model offering easy to install features such as a magnetic grille and optional back can. The 86 series offers a variety of models with various looks and mounting features and offers a style to fit just about any commercial installation.

86
SERIES



SPG6MT

6.5" 70/25V In-Ceiling Speaker
with Magnetic Grille

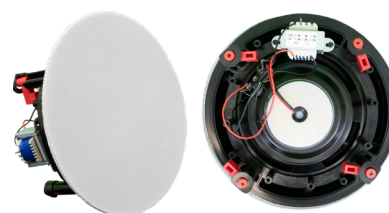
Features:

- Easy-mount magnetic grille
- 70/25V transformer with easy-install terminal block
- Dog-ear mounting clamps for secure installation
- Optional back can: SPG6MTCAN
- Optional mounting bracket: BRC6F
- Sold individually

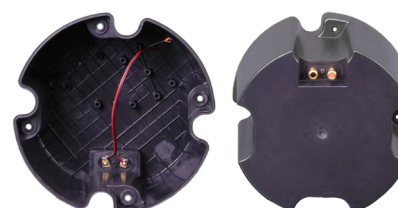


| Part Number | SPG6MT |
|--------------------------|---|
| RMS Power | 15W |
| Max Power | 25W |
| Transformer Type | Terminal Block |
| Transformer Power Taps | 70/25V: 5W, 2.5W, 1W |
| Termination Type | Wire Leads |
| Sensitivity (1W/1M) | 76dB |
| Maximum SPL (Pmax/1m) | 86dB |
| Driver Impedance | 8 Ohms |
| Terminal Block | Terminal Block |
| Frequency Response Range | 60Hz ~ 20kHz |
| Dispersion @1000Hz | 137° |
| Driver | 6.5" Polypropylene Woofer 0.5" Mylar Tweeter |
| Speaker Dimensions | 9.25" (Dia.) x 3.7" (D) |
| Mounting Dimensions | 8" (Dia.) |
| Minimum Mounting Depth | 3.6" |
| Weight | 2.9 lbs. |
| Material | Baffle: ABS757 Grille: Steel |
| Color | Off-White |
| Mounting Brackets | BRC6F |

Side and Back View



SPG6MTCAN: Inside and Bottom View



86 Series Contractor Speakers



Speco Technologies 86 Series of 8" 70/25V commercial speakers represents the ultimate combination of value and quality. The G86TG is the speaker that started it all for us and decades later is still our most popular and most imitated design. The line has since grown to 11 models with various looks and mounting features and offers a style to fit just about any commercial installation.

G86TG G86TCG G46TG

Features:

- Classic style white steel grille
- 70/25V transformer with colored leads
- G86TCG features volume control knob centered on grille

All speakers sold individually



G86TCG
with volume control knob

| Part Number | G86TG | G86TCG | G46TG |
|--------------------------|--|--|--|
| RMS Power | 10W | 10W | 10W |
| Max Power | 15W | 15W | 20W |
| Transformer Type | 70/25V | 70/25V | 70/25V |
| Transformer Power Taps | 5W, 2.5W, 1W, 0.5W, 0.25W & 8 Ohms | 5W, 2.5W, 1W, 0.5W, 0.25W & 8 Ohms | 5W, 2.5W, 1W, 0.5W, 0.25W |
| Termination Type | Colored Leads | Colored Leads | Colored Leads |
| Sensitivity (1W/1M) | 90dB | 90dB | 89dB |
| Maximum SPL (Pmax/1m) | 100dB | 100dB | 94dB |
| Driver Impedance | 8 Ohms | 8 Ohms | 8 Ohms |
| Magnet | 5 oz. Ferrite | 5 oz. Ferrite | 3.6 oz. Ferrite |
| Frequency Response Range | 85Hz ~ 20kHz | 85Hz ~ 20kHz | 150Hz - 20kHz |
| Dispersion @ 1000Hz | 120° Conical | 120° Conical | 225° Conical |
| Driver | 8" Paper cone woofer, 0.8" dual cone tweeter | 8" Paper cone woofer, 0.8" dual cone tweeter | 4" paper cone woofer, dual cone design tweeter |
| Speaker Dimensions | 13" (Dia.) x 3.5" (D) | 13" (Dia.) x 3.5" (D) | 6.7" (D) x 3.5" (H) |
| Mounting Dimensions | 11.3" (Dia.) | 11.3" (Dia.) | 4" (Dia.) |
| Minimum Mounting Depth | 2.7" | 2.7" | 3.25" |
| Weight | 2.7 lbs. | 2.7 lbs. | 1.5 lbs |
| Material | Grille: Steel | Grille: Steel | Steel |
| Color | Off-White | Off-White | Off-White |

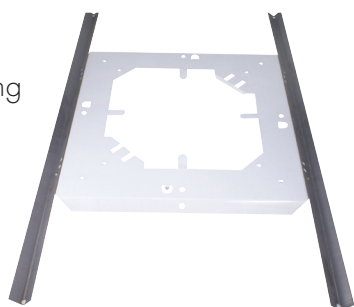


TS8

T-Bar Bridge for Ceiling Support

Features:

- Heavy gauge steel construction
- Dimensions: 23.63" (L) x 14" (W)
- Sold individually



STH8

Heavy Gauge Steel Backcan

Features:

- Perforated mounting strap for 8" speakers
- Heavy-gauge steel construction with undercoating that eliminates any mechanical or acoustical resonance caused by vibration
- Rust preventative finish
- Can be used as a backbox in ceilings or walls
- UL2043
- Dimensions: 12.25" (W bottom) x 8" (W top) x 4" (H)
- Sold individually



86 Series Contractor Speakers

Speco Technologies 86 Series of 70/25V commercial speakers represents the ultimate combination of value and quality. The SPG86T modern grille speaker represents an evolution of our most popular speaker with a look that represents modern tastes. The 86 Series includes 11 models with various looks and mounting features and offers a style to fit just about any commercial installation.

86
SERIES



SPG66T SPG66TC SPG86T SPG86TC

Features:

- Modern style mesh steel grille
- 70/25V transformer with colored leads
- Dog-ear mounting clamps for secure installation
- SPG86TC and SPG66TC feature volume control knob centered on grill
- Optional mounting brackets:
6" Models: BRC6, 8" Models: BRC8



SPG86TC
with volume
control knob

All speakers sold individually

| Part Number | SPG66T | SPG66TC | SPG86T | SPG86TC |
|--------------------------|--|--|--|--|
| RMS Power | 10W | 10W | 10W | 10W |
| Max Power | 15W | 15W | 15W | 15W |
| Transformer Type | 70/25V | 70/25V | 70/25V | 70/25V |
| Transformer Power Taps | 5W, 2.5W, 1W, 0.5W, 0.25W & 8 Ohms | 5W, 2.5W, 1W, 0.5W, 0.25W & 8 Ohms | 5W, 2.5W, 1W, 0.5W, 0.25W & 8 Ohms | 5W, 2.5W, 1W, 0.5W, 0.25W & 8 Ohms |
| Termination Type | Colored leads | Colored leads | Colored leads | Colored leads |
| Sensitivity (1W/1M) | 91dB | 91dB | 91dB | 91dB |
| Maximum SPL (Pmax/1m) | 101dB | 101dB | 100dB | 100dB |
| Driver Impedance | 8 Ohms | 8 Ohms | 8 Ohms | 8 Ohms |
| Magnet | 5 oz. Ferrite | 5 oz. Ferrite | 5 oz. Ferrite | 5 oz. Ferrite |
| Frequency Response Range | 120Hz ~ 20kHz | 120Hz ~ 20kHz | 90Hz ~ 20kHz | 90Hz ~ 20kHz |
| Dispersion @ 1000Hz | 120° Conical | 120° Conical | 120° Conical | 120° Conical |
| Driver | 6" Paper cone woofer 0.8" Dual cone tweeter | 6" Paper cone woofer 0.8" Dual cone tweeter | 8" Paper cone woofer 0.8" Dual cone tweeter | 8" Paper cone woofer 0.8" Dual cone tweeter |
| Speaker Dimensions | 9" (Dia.) x 3" (D) | 9" (Dia.) x 3" (D) | 10.75" (Dia.) x 3.5" (D) | 10.75" (Dia.) x 3.5" (D) |
| Mounting Dimensions | 7.625" (Dia.) | 7.625" (Dia.) | 9.5" (Dia.) | 9.5" (Dia.) |
| Minimum Mounting Depth | 2.4" | 2.4" | 2.8" | 2.8" |
| Weight | 1.9 lbs. | 2 lbs. | 2.2 lbs. | 2.3 lbs. |
| Material | Baffle: High impact polystyrene Grille: Steel | Baffle: High impact polystyrene Grille: Steel | Baffle: High impact polystyrene Grille: Steel | Baffle: High impact polystyrene Grille: Steel |
| Color | Off-White | Off-White | Off-White | Off-White |
| Mounting Brackets | BRC6 (sold in pairs - not included) | BRC6 (sold in pairs - not included) | BRC8 (sold in pairs - not included) | BRC8 (sold in pairs - not included) |

86 Series Contractor Speakers

Speco Technologies 86 Series of 70/25V commercial speakers represents the ultimate combination of value and quality. The 1X1/1X2/2X2 versions of this popular line offer an alternative look to the traditional round speaker. Of extra convenience is the 2' width of the 2X2 and 1X2 models. These fit right into an existing ceiling tile grid and eliminates the costly and time consuming chore of cutting precise holes in ceiling tiles. It also eliminates the need for additional mounting brackets, which adds tremendous cost savings over large numbers of speakers. The 86 Series includes 11 models with various looks and mounting features and offers a style to fit just about any commercial installation.

86
SERIES



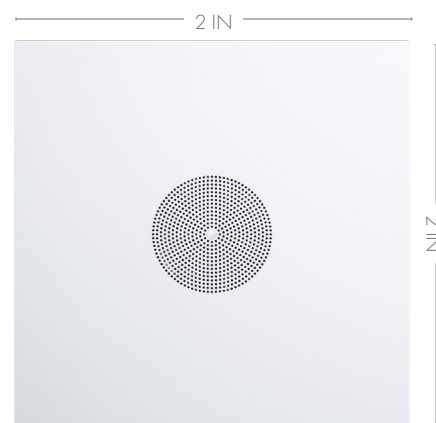
G86TG1X2 G86TG2X2 G86TG2X2C

Features:

- Square style white steel grille
- 70/25V transformer with colored leads
- "C" models features volume control knob centered on grill
- Optional Plenum-rated (UL2043) backcan: STH8 (1X1 and 2X2 models only)



G86TG1X2



G86TG2X2C
with volume control
knob

| Part Number | G86TG1X2 | G86TG2X2 / G86TG2X2C |
|--------------------------|---|---|
| RMS Power | 10W | 10W |
| Max Power | 15W | 15W |
| Transformer Type | 70/25V | 70/25V |
| Transformer Power Taps | 5W, 2.5W, 1W, 0.5W, 0.25W & 8 Ohms | 5W, 2.5W, 1W, 0.5W, 0.25W & 8 Ohms |
| Termination Type | Colored leads | Colored leads |
| Sensitivity (1W/1M) | 90dB | 90dB |
| Maximum SPL | 100dB | 100dB |
| Driver Impedance | 8 Ohms | 8 Ohms |
| Magnet | 5 oz. Ferrite | 5 oz. Ferrite |
| Frequency Response Range | 85Hz ~ 20kHz | 85Hz ~ 20kHz |
| Dispersion @ 1000Hz | 120° Conical | 120° Conical |
| Driver | 8" Paper cone woofer, 0.8" Dual cone tweeter | 8" Paper cone woofer, 0.8" Dual cone tweeter |
| Speaker Dimensions | 1' (W) x 2' (H) x 3.5" (D) | 2' (W) x 2' (H) x 3.5" (D) |
| Mounting Dimensions | n/a | n/a |
| Minimum Mounting Depth | 2.7" | 2.7" |
| Weight | G86TG1X2: 5.7 lbs. | G86TG2X2: 10.5 lbs. G86TG2X2C: 10.6 lbs. |
| Material | Grille: Steel | Grille: Steel |
| Color | Off-White | Off-White |
| Mounting Bracket | n/a | n/a |
| Back Can | n/a | STH8 (not Included) |



70/25V transformer
with colored leads

86 Series Contractor Speakers



Speco Technologies 86 Series of 70/25V commercial speakers represents the ultimate combination of value and quality. The WB86T wall baffle speaker is a classic and extremely popular design that was recently updated with some very modern features. The 86 Series includes 11 models with various looks and mounting features and offers a style to fit just about any commercial installation.

WBM6T

6.5" Vandal-Resistant Wall Speaker

Features:

- Speaker is completely enclosed in a sturdy metal enclosure
- Design greatly reduces chance of damage to or tampering with speaker

WBM6TA

6.5" Amplified Wall Speaker

Features:

- Built-in 10W Amplifier
- Requires 12VDC power (not included)



| Part Number | WBM6T | WBM6TA |
|--------------------------|--|----------------------|
| RMS Power | 20W | |
| Max Power | 40W | |
| Transformer Type | 70/25V | N/A |
| Transformer Settings | 6W, 3W, 1.5W | N/A |
| Sensitivity (1W/1M) | 87dB | |
| Maximum SPL | 103dB | |
| Driver Impedance | 8 Ohms | |
| Magnet | 10 oz. Ferrite | |
| Frequency Response Range | 110Hz - 20kHz | |
| Dispersion @ 1000Hz | 180° | |
| Driver | 6.5" polypropylene cone, rubber edge woofer, .5 PEI dome tweeter | |
| Speaker Dimensions | 7.7" (L) x 7.7" (W) x 3.2" (H) | |
| Built-in Amplifier | N/A | 10W |
| External Power | N/A | 12VDC (not included) |
| Weight | 6 lbs | |
| Material | Metal | |

86 Series Contractor Speakers

Speco Technologies 86 Series of 70/25V commercial speakers represents the ultimate combination of value and quality. The WB86T wall baffle speaker is a classic and extremely popular design that was recently updated with some very modern features. The 86 Series includes 11 models with various looks and mounting features and offers a style to fit just about any commercial installation.



WB86T

8" 70/25V Wall Baffle Speaker

Features:

- Solid wood construction
- Fully enclosed for internal component protection
- Black cloth grille
- 70/25V selectable transformer
- Press terminals for wiring



Transformer Dial



| Part Number | WB86T | | |
|------------------------|---------------------------------------|--------------------------|--|
| RMS Power | 10W | Magnet | 5 oz. Ferrite |
| Max Power | 15W | Frequency Response Range | 85Hz ~ 20kHz |
| Transformer Type | 70/25V (Selectable) | Dispersion @ 1000Hz | 120° Conical |
| Transformer Power Taps | 10W, 5W, 2.5W, 1.25W, 0.625W & 8 Ohms | Driver | 8" Paper cone woofer, 0.8" Dual cone tweeter |
| Termination Type | Press terminal | Speaker Dimensions | 10" (W) x 10" (H) x 5.43" top/3.19" bottom (D) |
| Sensitivity (1W/1m) | 93dB | Weight | 6.9 lbs. |
| Maximum SPL (Pmax/1m) | 105dB | Material | Baffle: Wood Grille: Cloth |
| Driver Impedance | 8 Ohms | Color | Brown body, black grille |

Specialty Commercial Speakers



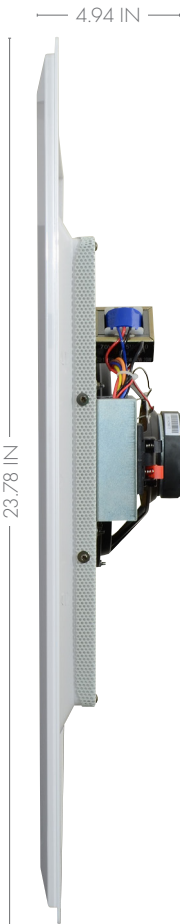
Speco Technologies offers a line of specialty speakers designed for very specific and important applications. The SPCT8T is a covert speaker designed in the guise of an AC vent. In addition to the aesthetic appeal of the design, there are also two additional important benefits. First, this speaker is 2' by 2' and fits directly into a ceiling tile grid. This saves time cutting holes and also saves the need to purchase a tile mounting bracket. Also, the vent grill design helps disperse the audio in a wider pattern than a typical speaker.

SPCT8T

8" 70/25V Ceiling Tile Speaker

Features:

- Easy select transformer dial
- 25V or 70V selector switch
- Fits directly into a 2'x2' ceiling tile grid
- Smooth vent facade design
- Includes 2' rail for mounting in a 2' x 4' ceiling grid



Easy select transformer dial



| Part Number | SPCT8T |
|--------------------------|--|
| RMS Power | 30W |
| Max Power | 60W |
| Transformer Type | 70/25V (Selectable) |
| Transformer Power Taps | 20W, 10W, 5W, 2.5W, 1.25W, & 8 Ohms |
| Termination Type | Press terminal |
| Sensitivity (1W/1M) | 89dB |
| Maximum SPL (Pmax/1m) | 97.1 dB |
| Driver Impedance | 8 Ohms |
| Magnet | 10 oz. Ferrite |
| Frequency Response Range | 50Hz ~ 20kHz |
| Dispersion @ 1000Hz | 160° Conical |
| Driver | 8" Polypropylene woofer, 0.75" Mylar tweeter |
| Speaker Dimensions | 23.78" (W) x 23.78" (H) x 4.94" (D) |
| Mounting Dimensions | n/a |
| Minimum Mounting Depth | 6.5" (Dia.) |
| Weight | 7.26 lbs. |
| Material | Baffle: High impact polystyrene |
| Color | White |

Specialty Commercial Speakers

The SP30PT is a hanging pendant speaker which facilitates mounting in open ceilings. One big advantage of a pendant speaker is the ability to mount a speaker much closer to the ground than a high ceiling would allow, thus reducing the amount of power needed in the speaker and allowing a smaller and less expensive amplifier to be used. Our pendant speakers skillfully combine style, convenience and value into one package.

SP30PT

5" 70/25V Pendant Mount Speaker - White

SP30PTB

5" 70/25V Pendant Mount Speaker - Black

Features:

- Attractive, 3-hook, enclosed ABS design
- 70/25V selectable transformer
- Press terminals for wiring
- Built-in safety loop for additional mounting security
- Includes 11.25" hanging apparatus

All speakers sold individually



| Part Number | SP30PT/SP30PTB |
|--------------------------|--|
| RMS Power | 30W |
| Max Power | 60W |
| Transformer Type | 70/25V (Selectable) |
| Transformer Power Taps | 30W, 15W, 7.5W, 5W, 2.5W, 1W, 0.5W, 0.25W & 8 Ohms |
| Termination Type | Press terminal |
| Sensitivity (1W/1M) | 92dB |
| Maximum SPL (Pmax/1m) | 93.4 dB |
| Driver Impedance | 8 Ohms |
| Magnet | 11 oz. Ferrite |
| Frequency Response Range | 90Hz ~ 20kHz |
| Dispersion @ 1000Hz | 100° Conical |
| Driver | 5" Polypropylene woofer, 0.5" Mylar tweeter |
| Speaker Dimensions | 3.98" (Dia.) Top / 8.6" (Dia) Bottom / 5.32" (H) |
| Mounting Dimensions | n/a |
| Minimum Mounting Depth | n/a |
| Weight | 5 lbs. |
| Material | Body: ABS Grille: Metal |
| Color | SP30PT: Off-White SP30PTB: Black |



Specialty Commercial Speakers

These versatile speakers are capable of being mounted as pendant, as wall mount, or as ground mount/landscape speakers (optional mounting kits required for wall/ground). Its premium construction and built-in selectable 70/25V transformer with settings of 32W, 16W, 8W, 4W and 8 Ohms (SP6PTB and SP6PTW only) is perfect for commercial and residential installations. These speakers include Pendant Mount accessories and offer an optional mounting kit for wall mounting or landscape mounting speaker (Black speakers use SP6PMNTB which includes black ground mount and black wall mount accessories, while white speakers use SP6PMNT which includes black ground mount and white wall mount accessories)

SP6PTB

With transformer - Black

SP6PTW

With transformer - White

Features:

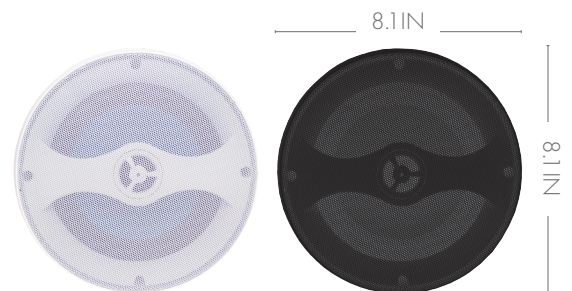
- Versatile speakers capable of being mounted as pendant, as wall mount, or as ground mount/landscape speakers (optional mounting kits required for wall/ground)
- Premium construction for commercial and residential installations

WEATHER RESISTANT



CONTRACTOR ELITE

| Part Number | SP6PTB / SP6PTW |
|--------------------------|--|
| RMS Power | 32W |
| Max. Power | 64W |
| Transformer Type | 70/25V |
| Transformer Power Taps | 32, 16, 8, 4W and 8 Ohms |
| Termination Type | Phoenix Connector |
| Sensitivity (1W/1M) | 88dB |
| Maximum SPL | 92dB |
| Magnet Size & Material | 15.5 oz. ferrite |
| Frequency Response Range | 98Hz ~ 20kHz |
| Dispersion @ 1000Hz | 100° |
| Driver | 6.5" Polypropylene woofer, 1" Polyurethane tweeter |
| Driver Impedance | 8 Ohms |
| Unit Dimensions | 8.1" (Dia.) x 12.6" (H) |
| Unit Weight | 7 lbs. |
| Unit Material | Polypropylene Composite |
| Unit Color | White or Black (B) |
| Optional Mounting Kit | SP6PMNTB (black) / SP6PMNT (white) |



SP6PMNT
Black ground
mount & white
wall mount



SP6PMNTB
Black ground
mount & black
wall mount



Specialty Commercial Speakers

The SPP20T is not quite a horn and not quite a speaker, but rather something that gives you the best of both worlds. You get the sound quality of an actual 5" cone speaker coupled with the projection ability of a horn. These units are ideal for installations where you want better sound quality for background music or voice than you might get from a typical horn, but need to project the sound a little further or in a louder environment than a typical cone speaker could handle.

SPP20T

5" 70V Projection Speaker

Features:

- Mounts like a horn with adjustable bracket
- Constructed for indoor or outdoor use
- Built-in 70V transformer

WEATHER RESISTANT

All speakers sold individually

| Part Number | SPP20T |
|--------------------------|-------------------------------|
| RMS Power | 20W |
| Max Power | 30W |
| Transformer Type | 70V |
| Transformer Power Tap | 20W, 10W, 5W |
| Termination Type | Terminal |
| Sensitivity (1W/1M) | 90dB |
| Maximum SPL (Pmax/1M) | 130dB |
| Driver Impedance | 8 Ohms |
| Magnet size and material | 11.4 Oz Ferrite |
| Frequency Response Range | 160Hz ~ 125KHz |
| Dispersion @ 1000Hz | 100° |
| Driver | 5" Polypropylene coated paper |
| Speaker Dimensions | 6.8" Diameter x 8.7" length |
| Weight | 3.6 lbs. |
| Material | ABS, Grille: Aluminum |



Specialty Commercial Speakers

With a realistic rock design, these fully weather-resistant speakers combine strong specifications and installer friendly features to bring sound seamlessly into a commercial or residential outdoor environment without sacrificing any aesthetic beauty. Constructed of a high-end polymer and coupled with a fine mesh integrated grille, these rock speakers will provide years of performance and sound enjoyment to your outdoor listening environment.

SPRK65CBT

6.5" 70/25V Outdoor Rock Speakers - Sandstone Brown

SPRK65CGT

6.5" 70/25V Outdoor Rock Speakers - Granite Grey

Features:

- Weather-resistant design
- Rock appearance blends seamlessly into outdoor environments
- 70/25V selectable transformer



All speakers sold individually

| Part Number | SPRK65CBT | SPRK65CGT |
|--------------------------|---|---|
| RMS Power | 30W | 30W |
| Max Power | 60W | 60W |
| Transformer Type | 70/25V | 70/25V |
| Transformer Power Taps | 30W,15W,7.5W,3.75W & 8 Ohms | 30W,15W,7.5W,3.75W & 8 Ohms |
| Termination Type | Wire leads | Wire leads |
| Sensitivity (1W/1M) | 87dB | 87dB |
| Maximum SPL (Pmax/1m) | 92dB | 92dB |
| Driver Impedance | 8 Ohms | 8 Ohms |
| Magnet | 10 oz. Ferrite | 10 oz. Ferrite |
| Frequency Response Range | 75Hz ~ 20kHz | 75Hz ~ 20kHz |
| Dispersion @ 1000Hz | 120° Conical | 120° Conical |
| Driver | 6.5" Polypropylene woofer, 0.5" Mylar tweeter | 6.5" Polypropylene woofer, 1" Mylar tweeter |
| Speaker Dimensions | 12.6" (W) x 13.39" (H) x 11.8" (D) | 12.6" (W) x 13.39" (H) x 11.8" (D) |
| Weight | 13 lbs. | 13 lbs. |
| Material | Fiberglass reinforced plastic | Fiberglass reinforced plastic |
| Color | Sandstone Brown | Granite Grey |

Indoor/Outdoor Commercial Speakers

Our All-Weather Elite (AWE) speakers offer great sound in a unique, yet ultra-stylish design. The sound quality and appearance of these speakers make them invaluable for use in both indoor applications (such as bars, restaurants, schools, retail, etc.), and outdoor applications (such as homes, restaurants, schools, etc.). The compact size helps them not only blend into the background better, but also fit perfectly in tight spaces.

SP4AWET

4" Indoor/Outdoor Wall-Mount Speaker with Transformer – Black

SP4AWETW

4" Indoor/Outdoor Wall-Mount Speaker with Transformer – White

Features:

- Rounded, stylish design
- Horizontal-swivel mounting bracket
- 70/25V selectable transformer
- Weather-resistant design



Transformer Dial & Terminals



| Part Number | SP4AWET | SP4AWETW |
|--------------------------|--|--|
| RMS Power | 25W | 25W |
| Max Power | 40W | 40W |
| Transformer Type | 70/25V (Selectable) | 70/25V (Selectable) |
| Transformer Power Taps | 20W, 15W, 10W, & 5W | 20W, 15W, 10W, & 5W |
| Termination Type | Press terminal | Press terminal |
| Sensitivity (1W/1M) | 84dB | 84dB |
| Maximum SPL (Pmax/1m) | 104dB | 104dB |
| Driver Impedance | 8 Ohms | 8 Ohms |
| Magnet | 9 oz. Ferrite | 9 oz. Ferrite |
| Frequency Response Range | 75Hz ~ 20kHz | 75Hz ~ 20kHz |
| Dispersion @ 1000Hz | 180° Conical | 180° Conical |
| Driver | 4" mica/polypropylene woofer, 0.75" silk tweeter | 4" mica/polypropylene woofer, 0.75" silk tweeter |
| Speaker Dimensions | 6" (W) x 9.5" (H) x 6.5" (D) | 6" (W) x 9.5" (H) x 6.5" (D) |
| Weight | 5.5 lbs. | 5.5 lbs. |
| Material | Body: High impact polystyrene Grille: Treated metal Bracket: Treated metal | Body: High impact polystyrene Grille: Treated metal Bracket: Treated metal |
| Color | Black | White |

All speakers sold individually



— 6 IN —



— 9.5 IN —

— 6.5 IN —

Contractor Elite Series Indoor/Outdoor Wall-Mount Speakers

Contractor Elite is far from your common speaker line. Though designed with commercial applications in mind, these speakers are built with high-performance materials and features you'd find in high-end residential installations. The Contractor Elite Outdoor speaker line provides amazing sound, stylish looks, and easy installations – all for an amazing price.

SPCE5OTW

5.25", white housing, 70V, pair

SPCE6OTW

6.5", white housing, 70V, pair

SPCE6OTB

6.5", black housing, 70V, pair

SPCE8OTW

8", white housing, 70V, each

SPCE8OTB

8", black housing, 70V, each



Features:

- Great sound at an affordable price
- IP66 compliant, weather resistant
- Aluminum grille for extended use in outdoor environments
- "T" models come with a selectable 70V transformer
- 5 year warranty against manufacturing defects

| Part Number | SPCE5OTW | SPCE6OTW/SPCE6OTB | SPCE8OTW/SPCE8OTB |
|--|---|---|---|
| RMS Output Power | 40W | 60W | 100W |
| Max Output Power | 80W | 120W | 140W |
| Sensitivity (1W/1M) | 84dB | 88dB | 87dB |
| Maximum SPL (Pmax/1M) | 100dB | 102dB | 108dB |
| Driver Impedance | 8 Ohms | 8 Ohms | 8 Ohms |
| Frequency Response Range | 90Hz - 20kHz | 85Hz - 20kHz | 65Hz - 20kHz |
| Driver | 5.25" polypropylene woofer, 0.75" silk dome tweeter | 6.5" polypropylene woofer, 1" silk dome tweeter | 8" polypropylene woofer, 1" silk dome tweeter |
| Transformer Settings (for "T" Models only) | 70V (40W, 20W, 10W, 5W, 2.5W, 8 Ohms) | 70V (50W, 25W, 12.5W, 6W, 3W, 8 Ohms) | 70V (100W, 50W, 25W, 12.5W, 8 Ohms) |
| Dimensions | 7" (L) x 5.5" (D) x 11.3" (H) | 7.9" (L) x 6.6" (D) x 12.6" (H) | 9.8" (L) x 7" (D) x 15.6" (H) |
| Speaker Grille Material | Aluminum | Aluminum | Aluminum |
| Color | White (W) / Black (B) | White (W) / Black (B) | White (W) / Black (B) |



Side



Front

Indoor/Outdoor Commercial Speakers

The DMS Series from Speco Technologies represents feature packed 3-way sound in a value priced wall-mount unit. This series is our longest selling line of indoor/outdoor wall-mount speakers, and for good reason. With die-cast construction and great quality at an affordable price, the DMS series of speakers are ideal for any wall-mount application.

DMS3TS

4" 3-Way Indoor/Outdoor Wall-Mount Speaker with
Transformer – Black

DMS3TSW

4" 3-Way Indoor/Outdoor Wall-Mount Speaker with
Transformer – White

Features:

- Compact, full-range design
- Each speaker contains:
4" Polypropylene woofer,
2" Polypropylene midrange and
1" Polypropylene dome tweeter
- Die-cast enclosure, complete with mounting bracket,
speaker wire and mounting hardware
- Weather-resistant design



Transformer Dial & Terminals



All speakers sold individually

| Part Number | DMS3TS | DMS3TSW |
|--------------------------|---|---|
| RMS Power | 15W | 15W |
| Max Power | 25W | 25W |
| Transformer Type | 70/25V (Selectable) | 70/25V (Selectable) |
| Transformer Power Taps | 15W, 7.5W, 4W, 2W, 1W, & 8 Ohms | 15W, 7.5W, 4W, 2W, 1W, & 8 Ohms |
| Termination Type | Screw terminal | Screw terminal |
| Sensitivity (1W/1M) | 86dB | 86dB |
| Maximum SPL (Pmax/1m) | 97db | 97db |
| Driver Impedance | 8 Ohms | 8 Ohms |
| Magnet | 10 oz. Ferrite | 10 oz. Ferrite |
| Frequency Response Range | 110Hz ~ 20kHz | 110Hz ~ 20kHz |
| Dispersion @ 1000Hz | 180° Conical | 180° Conical |
| Driver | 4" Polypropylene woofer, 2" Mylar mid-range, 1" Mylar tweeter | 4" Polypropylene woofer, 2" Mylar mid-range, 1" Mylar tweeter |
| Speaker Dimensions | 4.5" (W) x 7.25" (H) x 4.375" (D) | 4.5" (W) x 7.25" (H) x 4.375" (D) |
| Weight | 4.2 lbs. | 4.2 lbs. |
| Material | Body: Aluminum Grille: Treated metal | Body: Aluminum Grille: Treated metal |
| Color | Black | White |



— 4.375 IN —



— 4.5 IN —



— 7.25 IN —

Professional Mini Communication Speakers

These professional communication speakers from Speco Technologies are great for mobile communication needs, or for providing audio anywhere a 3.5mm plug is provided. Designed for indoor use, the AES4 is amplified while the CBS4 is passive.

AES4

4" Amplified Professional Communication
Extension Speaker

CBS4

4" Professional Communication Extension Speaker

Features:

- Swivel bracket for all angle mounting
- ABS plastic enclosure
- Soft, padded grille
- Complete with 10' cord and 3.5mm standard plug
- Controlled speech frequency response to limit background noise
- AES4 requires 12VDC power supply (not included)



AES4



AES4 Rear View



CBS4 Rear View



CBS4



| Part Number | AES4 | CBS4 |
|--------------------------|--------------------------------|--------------------------------|
| RMS Power | 5W | 5W |
| Max Power | 10W | 10W |
| Termination Type | Wire Strip | 3.5mm Mini-Plug |
| Sensitivity (1W/1M) | 82dB | 82dB |
| Maximum SPL (Pmax/1m) | 96dB | 96dB |
| Driver Impedance | 4 - 8 Ohms | 4 - 8 Ohms |
| Magnet | 4.5 oz. Ferrite | 4.5 oz. Ferrite |
| Frequency Response Range | 150Hz ~ 5kHz | 150Hz ~ 5kHz |
| Dispersion @ 1000Hz | 90° Conical | 90° Conical |
| Driver | 4" Treated paper woofer | 4" Treated paper woofer |
| Speaker Dimensions | 5.5" (W) x 4.5" (H) x 2.5" (D) | 5.5" (W) x 4.5" (H) x 2.5" (D) |
| Weight | 1.5 lbs. | 1.3 lbs. |
| Material | Body: ABS | Body: ABS |
| Color | Grille: Patent leather | Grille: Patent leather |



Professional Mini Communication Speakers

The CBS240 is an all-weather professional communication extension speaker.
The weather-resistant design makes it great for marine or other mobile applications where there is a threat of moisture.

CBS240

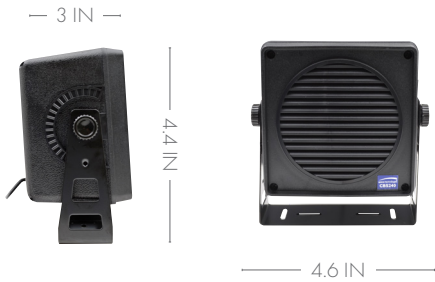
4" Weather-Resistant Professional Communication Extension Speaker

Features:

- Swivel bracket for all angle mounting
- ABS plastic enclosure
- Complete with 10' cord and 3.5mm standard plug

| Part Number | CBS240 |
|--------------------------|------------------------------|
| RMS Power | 4W |
| Max Power | 7W |
| Termination Type | 3.5mm Mini-Plug |
| Sensitivity (1W/1M) | 88dB |
| Maximum SPL (Pmax/1m) | 106dB |
| Driver Impedance | 8 Ohms |
| Magnet | 3 oz. Ferrite |
| Frequency Response Range | 180Hz ~ 6.6kHz |
| Dispersion @ 1000Hz | 90° Conical |
| Driver | 4" Polypropylene |
| Speaker Dimensions | 4.6" (W) x 4.4" (H) x 3" (D) |
| Weight | 1.2 lbs. |
| Material | Body: ABS Bracket: Metal |
| Color | Black |

CBS240 Rear View



| Mini Speakers | | | | | | | |
|---------------|------------|-----------|-----------------|-------------|-------------|-----------------|----------------------|
| Part Number | Dimensions | Impedance | Res. Freq. (Hz) | Freq. Range | Sensitivity | Power Nom Watts | Alinco Mag. Wht. oz. |
| U260SX | 2" square | 8 Ohms | 375 - 485 | FO - 4,500 | 92dB | 0.2 | 0.33 |
| U265SX | 2" square | 8 Ohms | 275 - 390 | FO - 4,500 | 92dB | 0.3 | 0.4 |



Available in bulk only - 50 pieces per pack standard

Professional UHF 700 Frequency-Selectable Microphone Line



Our professional, UHF 700 frequency-selectable single channel receiver and handheld and lapel microphone transmitters allow the user to select and match desired frequencies on each unit. This eliminates the need to maintain high inventory levels of similar units with locked frequencies; providing clear, interference-free channels of communication for roaming distances in excess of 150 feet.

Features:

- Up to 700 selectable pre-programmed frequencies make it easy to set up multiple system configurations and avoid interference
- Auto-scan function can locate interference-free channels easily
- Diversity technology ensures quality reception
- Integrated charging function potentially saves money and the environment
- Constructed from durable plastic with a ½ rack design
- Squelch adjustment
- Balanced XLR connector and unbalanced ¼" jack audio output
- FCC, CE, RoHS compliant

MUHF101

Single Channel True Diversity PLL Receiver



| Part Number | MUHF101 |
|-----------------------|-----------------------------|
| Receiving Sensitivity | at 10uV over 80dB S/N ratio |
| Selectivity | More than 50dB |
| AF Response | 80Hz - 16kHz (±3dB) |
| T.H.D. | More than 1% (at 1kHz) |
| IF Frequency | 1st 243.95MHz 2nd 10.7MHz |
| Dynamic Range | More than 96dB |
| Tone Signal | 32.768kHz |

| Part Number | MUF101 (Cont.) |
|-----------------------|-----------------------------|
| Receiving Sensitivity | at 10uV over 80dB S/N ratio |
| Selectivity | More than 50dB |
| AF Response | 80Hz - 16kHz (±3dB) |
| T.H.D. | More than 1% (at 1kHz) |
| IF Frequency | 1st 243.95MHz 2nd 10.7MHz |
| Dynamic Range | More than 96dB |
| Tone Signal | 32.768kHz |

MUHFHH

Single Channel Handheld Mic



| Part Number | MUHFHH/MUHFLP |
|-------------------------|---|
| Carrier Frequency Range | UHF band 540 - 570 MHz |
| RF Power Output | 10mW (max.) |
| Oscillator | PLL synthesized |
| Frequency Stability | ±0.005% |
| Maximum Deviation | ±48kHz |
| Spurious Emission | More than 60dB below carrier frequency |
| T.H.D. | More than 1% (at 1kHz) |
| Microphone Cartridge | (Handheld) uni-directional dynamic unit. (Lavalier) uni-directional electret condenser unit |
| Operating Voltage | DC1.5V x 2 AA size dry or rechargeable batteries (not included) |
| Current Consumption | 120mA (max.) |

MUHFLP

Single Channel Lapel Mic



Wired Microphones

Complete your installation with high-quality microphones from Speco Technologies.

DM520P

Dynamic Push-To-Talk Handheld Microphone

- For CB and professional communications
- Includes 6' cable



MCHH100A

Dynamic Handheld Microphone

2 IN



XLR Connection



Includes carrying case, mic stand adapter and 15' XLR cable

7 IN



MGS1C

Dynamic Adjustable Gooseneck Microphone
Chrome



MGS1

Dynamic Adjustable Gooseneck Microphone

12 IN



3-wire connection



| Part Number | DM520P | MCHH100A | MGS1 | MGS1C |
|--------------------|---------------------------------|---------------------------|------------------|-------|
| Frequency Response | 100Hz ~ 10kHz | 50Hz ~ 13kHz | 300Hz ~ 10kHz | |
| Impedance | 500 Ohms | 500 Ohms | 500 Ohms | |
| Sensitivity | -78dB ± 3dB | -54dB ± 3dB | -74dB ± 3dB | |
| Capsule type | Dynamic | Dynamic | Dynamic | |
| Pattern | Omni-Directional | Uni-Directional | Omni-Directional | |
| Dimensions | 4" (L) x 2.4" (W) x 2" (D) | 7" (L) x 2" (Dia. at top) | 12" gooseneck | |
| Connector | 1/4" unbalanced (TS) phono plug | XLR | 3-wire | |

Wired Microphones / Accessories

Complete your installation with high-quality microphones from Speco Technologies.



MCDT300A

Condenser Adjustable Gooseneck Tabletop Paging/Conference Microphone

- On/off paging button
- Includes 15' Mini XLR to XLR cable with 1/4" adapter and volume control knob
- Requires two "AA" batteries (not included)



Includes 15 FT
XLR cable

MHL5S

Dynamic Adjustable Gooseneck
Tabletop Paging Microphone

- Momentary switch for priority paging and lock down for continuous use
- Dual impedance



| Part Number | MCDT300A | MHL5S |
|--------------------|--|---|
| Frequency Response | 50Hz ~ 16kHz | 80Hz ~ 12kHz |
| Impedance | 200 Ohms | Selectable Impedance: High: 50kHz Low: 600 Ohms |
| Sensitivity | -42dB ± 3dB | Sensitivity: High: -53dB ± 3dB Low: -71 dB ± 13dB |
| Capsule type | Condenser | Dynamic |
| Pattern | Uni-Directional | Uni-Directional |
| Dimensions | Gooseneck: 18" Base: 7" (L) x 4.5" (W) x 2.5" (H) | Gooseneck: 12" Base: 6.3" (L) x 4.75" (W) x 3.77" (H) Cord: Expandable to 5' |
| Connector | Mini-XLR on base | XLR |

MSA1

Universal Mic Stand Adapter

Features:

- Fits most handheld microphones
- Clamp-on style is ideal for wider microphones



MCA10

10' High Performance XLR Mic Cable

MCA20

20' High Performance XLR Mic Cable

Features:

- Low Impedance
- Male to Female XLR Connectors



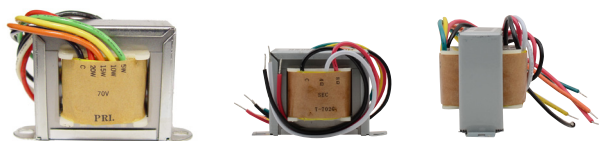
Transformers

These accessories from Speco Technologies enable any 8 Ohms speaker to be utilized in a 70V paging system by simply placing the transformer in line between the speaker and amplifier.

All transformers sold individually

| Part Number | T7020 | T70255 | T2510 | T7010 |
|-----------------------|-------------------|---------------------------|------------------------------|------------------------------|
| Multiple wattage taps | 20W, 15W, 10W, 5W | 5W, 2.5W, 1W, 0.5W, 0.25W | 10W, 5W, 2.5W, 1.25W, 0.625W | 10W, 5W, 2.5W, 1.25W, 0.625W |
| Audio system | 70V | 70V or 25V | 25V | 70V |

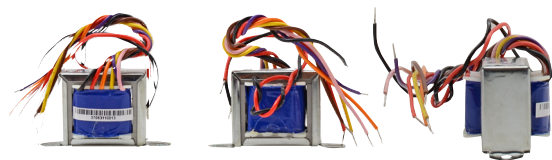
T7020 20W 70V Speaker Line Transformer



T7010 10W 70V Speaker Line Transformer



T2510 10W 25V Speaker Line Transformer



T70255 5W 70V/25V Speaker Line Transformer



PSR4C

12VDC Power Supply

12VDC 4 Amp Reg. Filtered Power Supply With 5 Amp Surge & Cigarette Lighter Adapter Built-In Front Panel

- Input: 117VAC / 60Hz
- Output: 12VDC 4 Amp constant, 5 Amp surge
- Dimensions: 4.25" (W) x 2.6" (H) x 7.5" (L)
- Weight: 4 lbs.



SFR12/SFA12

Strobe Flasher

SFR12 Red

SFA12 Amber

- 6 - 12VDC
- Weather-resistant
- Dimensions (Base): 1.75" (H) x 3.75" (D)
- Designed for intermittent use only



HDMI® Cables

Speco Technologies offers a line of HDMI accessories ideal for both A/V and CCTV installations. This comprehensive selection of cables, adapters and electronics are all well-priced and feature rich and are a perfect complement to any job.



HDCL25
HDCL50



HDVL3
HDVL6
HDVL10
HDVL15

| Part Number | HDCL25,50 | HDVL3,6,10,15 |
|--------------|--|---|
| Cable length | 25 ft., 50 ft. | 3 ft., 6 ft., 10 ft., 15 ft. |
| Cable type | Class 2 | Standard |
| Description | These thicker gauge cables are certified Class 2 (CL2), meaning they are safe for in-wall use. | These cables are perfect for most basic HDMI needs such as connecting a monitor to a DVR. |

HDMI to HDMI Adaptor

This adaptor is used to couple HDMI cables together or to protect your HDMI inputs by adding a flexible connection.

HDF2FCP

Female to female HDMI adaptor

The terms HDMI and HDMI High-Definition Multimedia Interface, and the HDMI Logo are trademarks or registered trademarks of HDMI Licensing LLC in the United States and other countries.





VGAHD2

VGA and Audio to HDMI Converter

- Converts VGA & analog stereo or digital audio (SPDIF) to HDMI
- Supports HDMI & DVI output mode (HDMI to DVI cable not included)
- Encodes analog stereo audio or digital audio onto the video signal for HDMI combined audio and video
- Built-in auto selection of analog or digital audio
- Supports PC resolution up to 1920x1200



Rear of Unit



HDXTNDR

2-Cable HDMI Extender

- Extends an HDMI signal up to 100' using two Cat5e or Cat6 cables
- Supports resolutions up to and including 1080p or 1920x1080 on pass through



Rear of Unit



HD4MAT

4 to 2 HDMI Matrix

- Supports 3D HDMI signals
- Supports resolutions up to and including 1080p
- Supports DTS/Dolby/DTS-HD/Dolby True HD/LPCM7.1/AC3
- Supports HDCP 1.2
- Supports simultaneous digital audio output: Stereo, Toslink and Coax
- Includes IR remote control



Rear of Unit



HD2SPL2

HDMI 1 to 2 Splitter

- Takes a single HDMI source and divides it into 2 (HD2SPL2) or 4 (HD4SPL2) monitors or televisions
- Supports 3D HDMI signals
- Supports a wide range of PC and HDTV resolutions from VGA to UXGA, and 480i to 1080p, up to 4K
- Supports DTS/Dolby/DTS-HD/Dolby True HD/LPCM7.1/AC3
- Supports HDCP 1.3
- Compatible with HDMI 1.4a

HD4SPL2

HDMI 1 to 4 Splitter



Rear of Unit



HD2SPL2



Rear of Unit



HD4SPL2

BLUE Audio Accessories



No installation is complete without the accessories needed to finish the job. BLUE, by Speco Technologies, is a full-line of high-quality audio and video accessories, suitable for a wide range of commercial and residential applications. BLUE accessories are designed to finish your job, within your budget.

CAMMIC2

Surface Mount Line Level Microphone

- Can be wall or ceiling mounted
- Designed for indoor spaces
- Ideal pickup range of 10 to 120 square feet
- Gain control to increase or reduce pick-up sensitivity



CAMMICW

Pre-Amplified Line Level Mic

- Constructed out of Aluminum alloy for outdoor use
- Pickup indoors in rooms up to 120 square feet
- Integrated pre-amplification processing circuit
- Built-in high-speed voice processing



CAMMIC

Pre-Amplified Line Level Mic

- Add-on mini-microphone for all systems
- High sensitivity microphone with 1.5 ft. power/audio cable
- Easy to install and ideal for all security surveillance voice recording applications
- Line level output



CAMMIC



UTPAUDIO
(shown below)



UTPAUDIO
(shown below)

UTPAUDIO

Audio CAT5 Extender and Ground Loop Device

- Gold-plated RCA female to RJ45
- Used in pairs via one CAT5 UTP cable to send audio signal of up to 1 mile
- 20Hz – 20kHz bandwidth
- Available for 75-120 Ohms cable
- High-performance to eliminate audio ground loop problem
- No power required
- Sold in pairs



CAMMICV

Mini Line Level Microphone with Volume Adjustment

- Perfect companion product for any camera needing an audio input source
- Open board design makes the microphone compact and potentially covert
- High sensitivity microphone with 19.7" (500mm) power/audio cable
- 3.5mm connection for easy hookup to camera
- 12VDC power operation (PSW5 power supply not included)
- It is recommended to install this microphone over 15' away from the speaker to minimize the impact of potential feedback.



For The Complete Line of Audio and Video Accessories, go to www.specotech.com

Compact Series 8 Ohms Weather-Resistant Horn Speakers

The compact series of horns from Speco Technologies are versatile enough to cover a wide range of applications from transportation to paging. Constructed of various materials, these 5" diameter horns offer a smaller profile to fit easily under car hoods or to discretely sit on a wall or ceiling.

SPC5P

5" Weather-Resistant ABS Horn Speaker with 10' Cord and 3.5mm Plug - 8 Ohms

SPC6P

5" Weather-Resistant ABS Horn Speaker with Metal Base - 8 Ohms

SPC8

5" Weather-Resistant Aluminum Horn Speaker - 8 Ohms

Features:

- Weather-resistant construction
- Compact 5" diameter, ideal for blending into background or fitting in small spaces
- Variety of materials and connection options
- Includes mounting bracket



SPC6P



SPC5P



| Part Number | SPC5P | SPC6P | SPC8 |
|--------------------------|-----------------------|--------------------------|---------------------------|
| RMS Power | 10W | 10W | 10W |
| Max Power | 15W | 15W | 15W |
| Termination Type | 3.5mm Mini-plug | Wire strip | Wire strip |
| Sensitivity (1W/1M) | 105dB | 105dB | 105dB |
| Maximum SPL (P/Max) | 106dB | 106dB | 106dB |
| Driver Impedance | 8 Ohms | 8 Ohms | 8 Ohms |
| Magnet | 3.6 oz. Ferrite | 3.6 oz. Ferrite | 3.6 oz. Ferrite |
| Frequency Response Range | 300Hz ~ 15kHz | 300Hz ~ 15kHz | 300Hz ~ 15kHz |
| Dispersion @ 1000Hz | 65° Conical | 75° Conical | 75° Conical |
| Speaker Dimensions | 5" (Dia.) x 4.75" (D) | 5" (Dia.) x 5.9" (D) | 5" (Dia.) x 5" (D) |
| Weight | .92 lbs. | 1 lbs. | .95 lbs. |
| Material | ABS | Body: ABS Base: Metal | Aluminum |
| Color | White | White | Body: Grey Base: Black |



SPC8



Contractor Series 4 and 8 Ohms Weather-Resistant Horn Speakers

Speco Technologies' offers one of the most comprehensive lines of P.A. horns in the industry, with options available with or without transformers, in ABS or Aluminum, with power up to 75W, as well as with a slew of other features. Our contractor series of horns represents some of our best selling items in the category, with diameters ranging from 6" to 8".



SPC10

6" Weather-Resistant Aluminum Horn - 8 Ohms

SPC104

6" Weather-Resistant Aluminum Horn - 4 Ohms

SPC15

8" Weather-Resistant Aluminum Horn - 8 Ohms

Features:

- Weather-resistant, aluminum construction
- Includes mounting bracket
- Rubber bell protector



| Part Number | SPC10 | SPC104 | SPC15 | | | | |
|---------------------|-----------------|-----------------|-----------------|--------------------------|----------------------|----------------------|--------------------|
| RMS Power | 10W | 10W | 15W | Frequency Response Range | 250Hz ~ 15kHz | 250Hz ~ 15kHz | 200Hz ~ 15kHz |
| Max Power | 15W | 15W | 25W | Dispersion @ 1000Hz | 65° Conical | 65° Conical | 75° Conical |
| Termination Type | Wire strip | Wire strip | Wire strip | Speaker Dimensions | 6" (Dia.) x 5.9" (D) | 6" (Dia.) x 5.9" (D) | 8" (Dia.) x 8" (D) |
| Sensitivity (1W/1M) | 105dB | 105dB | 110dB | Weight | 1.9 lbs. | 1.9 lbs. | 2.2 lbs. |
| Maximum SPL (P/Max) | 108dB | 108dB | 115dB | Material | Aluminum | Aluminum | Aluminum |
| Driver Impedance | 8 Ohms | 4 Ohms | 8 Ohms | Color | Grey | Grey | Grey |
| Magnet | 5.4 oz. Ferrite | 5.4 oz. Ferrite | 6.6 oz. Ferrite | | | | |

Horizontal Mount Rectangular 8 Ohms Weather-Resistant Horn Speakers

Rectangular horn speakers offer a wider dispersion range than your standard round horn. These horns from Speco Technologies come in a variety of sizes, materials and mounting options and offer a fantastic option for warehouses, sporting arenas, factories, schools, etc., and even come in a marine variation with extra conditioning suitable for nautical installations.

SPC12RP

6" x 4" Weather-Resistant ABS Marine Horn Speaker – 8 Ohms

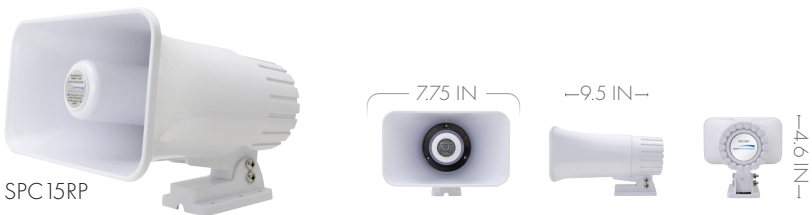


SPC15RP

8" x 5" Weather-Resistant ABS Marine Horn Speaker – 8 Ohms

SPC15R

8" x 5" Weather-Resistant Aluminum Horn Speaker – 8 Ohms



Features:

- Weather-resistant construction
- Includes mounting brackets
- Variety of materials and mounting options



| Part Number | SPC12RP | SPC15RP | SPC15R |
|--------------------------|----------------------------|---------------------------------|--------------------------|
| RMS Power | 20W | 15W | 15W |
| Max Power | 30W | 30W | 25W |
| Termination Type | Wire strip | Wire strip | Wire strip |
| Sensitivity (1W/1M) | 110dB | 105dB | 110dB |
| Maximum SPL (P/Max) | 107dB @ 1.6kHz | 116dB | 115dB |
| Driver Impedance | 8 Ohms | 8 Ohms | 8 Ohms |
| Magnet | 5.4 oz. Ferrite | 7.7 oz. Iron Oxide | 6.6 oz. Ferrite |
| Frequency Response Range | 200Hz ~ 15kHz | 200Hz ~ 15kHz | 200Hz ~ 15kHz |
| Dispersion @ 1000Hz | 105° (H) x 40° (V) | 150° (H) x 40° (V) | 150° (H) x 60° (V) |
| Speaker Dimensions | 6" (W) x 4" (H) x 7.9" (D) | 7.75" (W) x 4.6" (H) x 9.5" (D) | 8" (W) x 6" (H) x 8" (D) |
| Weight | 1.65 lbs. | 2.4 lbs. | 2 lbs. |
| Material | ABS | ABS | Aluminum |
| Color | White | White | Grey |

Commercial Series 70/25V

P.A. Horn Speakers

Speco Technologies' Commercial Series of horn speakers offer a great combination of quality, sound and value. These horns are ideal for almost any commercial application, and will last a long time with high-quality, solid weather-resistant construction.

SPC10RT

7" x 5" Weather-Resistant P.A. Horn
Speaker - 70/25V

SPC15RT

8" x 6" Weather-Resistant P.A. Horn
Speaker - 70/25V

SPC30RT

11" x 8" Weather-Resistant P.A. Horn
Speaker - 70/25V

Features:

- Stylish appearance
- Weather-resistant, ABS construction
- Includes mounting bracket



| Part Number | SPC10RT | SPC15RT | SPC30RT |
|--------------------------|--|--|--|
| RMS Power | 10W | 15W | 30W |
| Max Power | 20W | 30W | 60W |
| Transformer Type | 70/25V | 70/25V | 70/25V |
| Transformer Power Taps | 70V: 10W, 5W, 3W, 1W 25V: 10W, 5W, 1.3W, 0.6W, 0.4W, 0.1W | 70V: 15W, 10W, 5W, 3W, 1W 25V: 15W, 10W, 5W, 1.3W, 0.6W, 0.4W, 0.1W | 70V: 30W, 15W, 10W, 5W, 3W, 1W 25V: 30W, 15W, 10W, 3.7W, 1.9W, 1.3W, 0.6W, 0.4W, 0.1W |
| Termination Type | Wire strip | Wire strip | Wire strip |
| Sensitivity (1W/1M) | 103dB | 105dB | 107dB |
| Maximum SPL (P/Max) | 113dB | 117dB | 122dB |
| Driver Impedance | 8 Ohms | 8 Ohms | 8 Ohms |
| Magnet | 4.1 oz. | 5.1 oz. | 5.3 oz. |
| Frequency Response Range | 500Hz ~ 15kHz | 450Hz ~ 15kHz | 350Hz ~ 15kHz |
| Dispersion @ 1000Hz | 65° Conical | 70° (H) x 60° (V) | 90° (H) x 60° (V) |
| Speaker Dimensions | 7" (W) x 5" (H) x 5" (D) | 8.8" (W) x 6.25" (H) x 8.9" (D) | 11" (W) x 8" (H) x 10.25" (D) |
| Weight | 3 lbs. | 3.6 lbs. | 4.2 lbs. |
| Material | ABS | ABS | ABS |
| Color | Khaki | Khaki | Khaki |

Contractor Series 70/25V Weather-Resistant P.A. Horn Speakers

Speco Technologies’ offers one of the most comprehensive lines of P.A. horns in the industry, with options available with or without transformers, in ABS or Aluminum, with power up to 75W, as well as with a slew of other features. Our contractor series of horns represents some of our best selling items in the category, with diameters ranging from 6” to 15” and in 70/25V or 8 Ohms models. A high degree of engineering went into this unit and it can accomplish in a very cost-effective manner what formerly required a high-end digital system or multiple amplifiers.

SPC10T

6.5" Weather-Resistant Aluminum P.A. Horn
- 70/25V

SPC15T

8.5" Weather-Resistant Aluminum P.A. Horn
- 70/25V

SPC30T

10.5" Weather-Resistant Aluminum P.A.
Horn - 70/25V

Features:

- Weather-resistant, aluminum construction
- Includes mounting bracket
- Rubber bell protector
- Selectable 70/25V transformer dial



| Part Number | SPC10T | SPC15T | SPC30T |
|--------------------------|--|--|--|
| RMS Power | 10W | 15W | 30W |
| Max Power | 20W | 30W | 60W |
| Transformer Type | 70/25V | 70/25V | 70/25V |
| Transformer Power Taps | 70V: 10W, 5W, 3W, 1W 25V: 10W, 5W, 1.3W, 0.6W, 0.4W, 0.1W | 70V: 15W, 10W, 5W, 3W, 1W 25V: 15W, 10W, 3.7W, 1.9W, 1.3W, 0.6W, 0.4W, 0.1W | 70V: 30W, 15W, 10W, 5W, 3W, 1W 25V: 30W, 15W, 10W, 3.7W, 1.9W, 1.3W, 0.6W, 0.4W, 0.1W |
| Termination Type | Wire strip | Wire strip | Wire strip |
| Sensitivity (1W/1M) | 103dB | 105dB | 107dB |
| Maximum SPL (P/Max) | 113dB | 117dB | 122dB |
| Driver Impedance | 8 Ohms | 8 Ohms | 8 Ohms |
| Magnet | 4.1 oz. | 4.9 oz. Ferrite | 5.3 oz. Ferrite |
| Frequency Response Range | 500Hz ~ 15kHz | 450Hz ~ 15kHz | 350Hz ~ 15kHz |
| Dispersion @ 1000Hz | 65° Conical | 75° Conical | 85° Conical |
| Speaker Dimensions | 6.5" (Dia.) x 7.25" (D) | 8.5" (Dia.) x 9" (D) | 10.5" (Dia.) x 10" (D) |
| Weight | 2.6 lbs. | 3.2 lbs. | 3.9 lbs. |
| Material | Aluminum | Aluminum | Aluminum |
| Color | Grey | Grey | Grey |

Vertical Mount Rectangular Weather-Resistant Horn Speakers

Rectangular horn speakers offer a wider dispersion range than your standard round horn. These horns from Speco Technologies come in a variety of sizes, materials and mounting options and offer a fantastic option for warehouses, sporting arenas, factories, schools, etc.

SPC40RP

6.5" x 11" Weather-Resistant ABS Horn
Speaker - 8 Ohms

SPC40RT

6.5" x 11" Weather-Resistant ABS Horn
Speaker - 70/25 Volt

Features:

- Weather-resistant construction
- Includes mounting brackets
- Variety of materials and mounting options



| Part Number | SPC40RP | SPC40RT |
|--------------------------|--------------------------------|------------------------------|
| RMS Power | 20W | 32W |
| Max Power | 40W | 60W |
| Transformer Type | n/a | 70/25V |
| Transformer Power Taps | n/a | 32W, 16W, 8W, 4W, 2W |
| Termination Type | Wire strip | Wire strip |
| Sensitivity (1W/1M) | 110dB | 110dB |
| Maximum SPL (P/Max) | 120dB | 124dB |
| Driver Impedance | 8 Ohms | 8 Ohms |
| Magnet | 11.6 oz. Iron Oxide | 11.6 oz. Ferrite |
| Frequency Response Range | 200Hz ~ 15kHz | 250Hz ~ 15kHz |
| Dispersion @ 1000Hz | 160° (H) x 50° (V) | 160° (H) x 70° (V) |
| Speaker Dimensions | 6" (W) x 10.9" (H) x 8.4" (D) | 6.5" (W) x 11" (H) x 13" (D) |
| Weight | 3 lbs. | 6 lbs. |
| Material | Body: ABS Bracket: Aluminum | ABS |
| Color | White | White |

Weather-Resistant Alarm Sirens



SA15RP

5" White ABS Dual Tone Siren

SA4P

4" Black ABS Siren

SA5P

5" White ABS Siren

| Part Number | SA15RP | SA4P | SA5P |
|---------------------|------------|------------|---------------------------------|
| RMS Power | 30W | 20W | 20W |
| Max Power | 30W | 20W | 20W |
| Termination Type | Wire strip | Wire Strip | Wire strip |
| Sensitivity (1W/1M) | 120dB | 120dB | 107dB |
| Maximum SPL (P/Max) | 113dB | 117dB | 122dB |
| Driver Impedance | 8 Ohms | 8 Ohms | 8 Ohms |
| Color | White | Black | Body: Grey Base: Black |



Features:

- Compact design
- Warbling tone
- Weather-resistant ABS plastic
- Operates on 6 – 12VDC

Projection Horn Casings & Drivers

Create the perfect projection horn for your application by pairing our casings with our universal drivers.

SRH20

20" Aluminum Weather-Resistant Projector Horn for use with SRD Drivers

SRD80T

80W RMS Universal Driver with Built-In 70 Volt Line Transformer

SRD100

100W RMS 16 Ohms Universal Driver-16 Ohms



| Part Number | SRH20 | SRD80T | SRD100 |
|---------------------|------------------------|--|--|
| RMS Power | n/a | 80W | 100W |
| Max Power | n/a | 100W | 120W |
| Frequency Response | n/a | 300Hz ~ 5kHz | 250Hz ~ 8kHz |
| Impedance | n/a | 16Ohms | 16Ohms |
| Transformer | n/a | 70V | n/a |
| Transformer Taps | n/a | 80W, 40W, 20W, 10W, 5W | n/a |
| Sensitivity (1W/1M) | n/a | 112dB | 113dB |
| Dispersion | 80° | n/a | n/a |
| Low End Cutoff | 250Hz | n/a | n/a |
| Dimensions | 20" (Dia.) x 13.6" (D) | 6 (Dia.) Throat Dia.: 1.375 x 18 TPI | 6 (Dia.) Throat Dia.: 1.3 x 18 TPI |

NVR/DVR Audio Accessory Kits

ALL KITS ARE DESIGNED FOR USE WITH SPECOTEC TECHNOLOGIES DVRs /NVRs

DIGITAL DETERRENT™ AUDIO KITS*

DON'T JUST RECORD CRIME, PREVENT IT!

TWO-WAY AUDIO KITS*

DDAK4



ASPC20 Amplified Horn



PSDC24 Power Supply

2WAK2



PVL15A Amplifier

DMS3TS
Speaker



CAMMIC
Pre-Amplified Line
Level Mic

DDK2



PVL15A Amplifier



SPC15RP Amplified Horn



PSW5 Power Supply



SFR12

2WAK3



PBM30 Amplifier

DMS3TS
Speaker



CAMMIC
Pre-Amplified Line
Level Mic

DDK3



PBM30 Amplifier



SPC15RP Amplified Horn

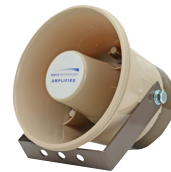


PSW5 Power Supply



SFR12

2WAK4



ASPC20 Amplified Horn



CAMMIC
Pre-Amplified Line
Level Mic



PSW5 Power Supply

* Feature available on most Speco Technologies DVRs/NVRs

In some installations it makes sense to have amplification locally at the speaker rather than pushed from a central location. The ASPC20 offers an economical alternative by combining the horn speaker and amp into one unit. This unit is also ideal for use with Speco Technologies patented DVR technologies such as Digital Deterrent and two-way audio.

ASPC20

6" Amplified Weather-Resistant ABS P.A.
Horn Speaker

Features:

- Weather-resistant, ABS construction
- Includes mounting bracket
- Requires a 10-16V DC power supply (not included)
- 2A, 3AG Fuse

Sold individually

ASPC20W

6" Amplified Weather-Resistant ABS P.A.
Horn Speaker

Features:

- Weather-resistant, ABS construction
- Includes mounting bracket
- Requires a 10-16V DC power supply (not included)
- 2A, 3AG Fuse

Sold individually



| Part Number | ASPC20/ ASPC20W |
|--------------------------|-----------------------------|
| RMS Power | 7W |
| Max Power | 20W |
| Termination Type | Wire strip |
| Sensitivity (1W/1M) | 102dB |
| Maximum SPL (P/Max) | 115dB |
| Driver Impedance | 8 Ohms |
| Magnet | 5.3 oz. Ferrite |
| Frequency Response Range | 500Hz ~ 5kHz |
| Dispersion @ 1000Hz | 90° Conical |
| Speaker Dimensions | 6" (Dia.) x 6" (D) |
| Weight | 2.4 lbs. |
| Material | Body : ABS Bracket: Iron |
| Color | Khaki Body, Brown Base |

Power/Audio
Cable Included



70/25V Wall Plate Volume Controls

WAT10DW



WAT50



Features:

- Standard wall-plate style
- 11 step attenuation
- Total attenuation at 33db
- Fits standard single gang high-cube junction box
- Set screw wire connection
- Accepts up to 12 gauge wire

Units with “W” come with white plastic plate & white knob
Units with a silver plate come with a black knob

| Part Number | WAT10 | WAT10DW | WAT50 | WAT50DW |
|------------------|-----------------|---------|-----------------|---------|
| Sound | Mono | Mono | Mono | Mono |
| Wattage | 10W | 10W | 50W | 50W |
| Output | 70/25V | 70/25V | 70/25V | 70/25V |
| Knob/plate color | Black/Silver | White | Black/Silver | White |
| Plate Material | Stainless Steel | ABS | Stainless Steel | ABS |

WAT100D

100W 70/25 Slider Volume Control
with Swappable Décora Plates

| Part Number | WAT100D |
|------------------|--|
| Sound | Mono |
| Wattage | 100W |
| Output | 70/25V |
| Knob/plate color | White, Ivory or Almond (all included) |
| Plate Material | ABS |



Residential Audio

SEE PAGE 7 FOR COMMERCIAL AUDIO



speco technologies
Giving You More.

Custom Series In-Ceiling Residential Speakers

Speco Technologies' Custom Series ceiling speakers are the perfect combination of performance and value. Designed to continue our rich history of audio innovation, the Custom Builder Series speakers are created for today's listening environments and lifestyles. Whether using these speakers in the home or office, they will provide performance, reliability and enjoyment for years to come. Custom Builder speakers offer premium features at an economical price point. Custom Designer speakers are designed with improved specs and features to offer a fantastic option for whole house audio installations.

SPCBC5

5.25" Custom Builder In-Ceiling Speaker (Pair)

SPCBC6

6.5" Custom Builder In-Ceiling Speaker (Pair)



Features:

- Integrated C-clamp mounting system
- Polymer woofer cones for improved acoustic response
- Liquid-cooled titanium anodized tweeters with a minimum diffraction pivoting island
- Powder coated grille may be painted to match any décor

All speakers sold in pairs

| Part Number | SPCBC5 | SPCBC6 |
|------------------------------------|---|--|
| Tweeter | Integrated wave guide | 1/2" (zero diffraction) pivoting poly-laminate, liquid cooled dome |
| Woofer | 5.25" poly-laminate with rubber surround | 6.5" mineral filled poly-laminate cone with rubber surround |
| Crossover | Full range | 6dB per octave |
| Input connection | Push terminals | Push terminals |
| Recommended Amplifier Power | 5W to 50W (80 watts peak) | 5W to 60W (100 watts peak) |
| Impedance | 8 Ohms | 8 Ohms |
| Frequency Response Range | 70Hz ~ 18kHz | 58Hz ~ 21 kHz |
| Sensitivity (1W/1M) | 90dB | 90dB |
| Baffle | Poly-carbonate for reduced resonance with C-clamp mounting system | Poly-carbonate for reduced resonance with C-clamp mounting system |
| Grille | Corrosion resistant powder coated metal | Corrosion resistant powder coated metal |
| Outside Dimensions | 8" round (Dia.) | 9" round (Dia.) |
| Depth | 2.4" (mounted in 1/2" drywall) | 2.75" (mounted in 1/2" drywall) |
| Retrofit Cutout Diameter | 6.5" (use template before cutting) | 7.5" (use template before cutting) |
| Optional New Construction Brackets | BRC5 | BRC6 |

SPCBC5



SPCBC6



Custom Series In-Ceiling Residential Speakers

Speco Technologies’ Custom Designer series takes the extremely popular Custom Builder speakers and makes them even better. The power has been bumped up to a 100W peak value, the woofer has been improved to be mica filled poly laminate, and the grill is now an easy install magnetic design. The speaker retains the zero-diffraction pivoting tweeter island and liquid-cooled Titanium tweeter of its predecessor, and overall is a worthy alternative to much more expensive whole-house speakers.

SPCDC6

6.5" Custom Designer In-Ceiling Speaker

Features:

- Integrated C-clamp mounting system
- Polymer woofer cones for improved acoustic response
- Liquid-cooled titanium anodized tweeters with a minimum diffraction pivoting island
- Powder coated grille may be painted to match any décor

All speakers sold in pairs



Easy-install magnetic grille

| Part Number | SPCDC6 |
|------------------------------------|--|
| Tweeter | 1/2" (zero diffraction) pivoting poly-laminate, liquid cooled dome |
| Woofer | 6.5" mica filled poly laminate cone with rubber surround |
| Crossover | 6dB per octave electro-acoustic |
| Input Connection | Push terminals |
| Recommended Amplifier Power | 5W to 65W (100 watts peak) |
| Impedance | 8 Ohms |
| Frequency Response Range | 48Hz ~ 21 kHz |
| Sensitivity (1W/1M) | 90dB |
| Baffle | Poly-carbonate for reduced resonance with C-clamp mounting system |
| Grille | Corrosion resistant powder coated metal, magnetic |
| Outside dimensions | 9" round (Dia.) |
| Depth | 3.46" (mounted in 1/2" drywall) |
| Retrofit Cutout Diameter | 7.5" (use template before cutting) |
| Optional New Construction Brackets | BRC6 |



-3.46 IN-

Contractor Series Enclosed Residential In-Ceiling Speakers

Speco Technologies has been a leader in contractor grade residential speakers for many years. The SP6ECS offers a full-range coaxial speaker with a plastic enclosure. This back box offers extra component protection and consistent and improved sound quality over open back speakers.

SP6ECS

6.5" Speaker with Enclosed Backcan

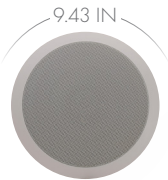
Features:

- ABS backcan
- C-clamp mounting system

All speakers sold in pairs



| Part Number | SP6ECS |
|---------------------------|--|
| RMS Power | 35W |
| Max Power | 70W |
| Termination Type | Press terminal |
| Sensitivity (1W/1M) | 90dB |
| Maximum SPL (Pmax/1m) | 93.1 dB |
| Driver Impedance | 8 Ohms |
| Magnet | 11.6 oz. Ferrite |
| Frequency Response Range | 65Hz ~ 20kHz |
| Dispersion @ 1000Hz | 120° Conical |
| Driver | 6.5" Polypropylene woofer, 0.5" Mylar tweeter |
| Speaker Dimensions | 9.43" (Dia.) x 6.1" (D) |
| Mounting Dimensions | 8.25" (Dia.) |
| Minimum Mounting Depth | 5.6" |
| Weight | 3.52 lbs. |
| Material | Baffle: ABS Backcan: ABS Grille: Metal |
| Color | White |
| Optional Mounting Bracket | BRC6F |



— 6.1 IN —



Series 25 In-Ceiling Speaker Line

We’ve utilized many years of sound expertise in developing the core of our in-ceiling speakers: The Series 25 audio line. Manufactured from durable and quality components, these speakers provide exceptional value. Enjoy the premium performance of full-range sound in your listening environment with these high-quality speakers.



SP525C

5.25" In-Ceiling Speaker

SP625C

6.5" In-Ceiling Speaker

Features:

- Stylish baffle design
- Pivoting tweeter

All speakers sold in pairs



| Part Number | SP525C | SP625C |
|---------------------------|--|--|
| RMS Power | 30W | 40W |
| Max Power | 60W | 80W |
| Termination Type | Press terminal | Press terminal |
| Sensitivity (1W/1M) | 87dB | 89dB |
| Maximum SPL (Pmax/1m) | 94.3dB | 95.5dB |
| Driver Impedance | 8 Ohms | 8 Ohms |
| Magnet | 10 oz. Ferrite | 11.6 oz. Ferrite |
| Frequency Response Range | 70Hz ~ 20kHz | 50Hz ~ 20kHz |
| Dispersion @ 1000Hz | 85° Conical | 85° Conical |
| Driver | 5.25" Polypropylene woofer, 0.75" Silk tweeter | 6.5" Polypropylene woofer, 1" Silk tweeter |
| Speaker Dimensions | 8" (Dia.) x 4" (D) | 9.25" (Dia.) x 4.25" (D) |
| Mounting Dimensions | 6.6" (Dia.) | 7.75" (Dia.) |
| Minimum Mounting Depth | 3.5" | 3.75" |
| Weight | 2.4 lbs. | 3 lbs. |
| Material | Baffle: ABS Grille: Metal | Baffle: ABS Grille: Metal |
| Color | White | White |
| Optional Mounting Bracket | BRC5 | BRC6 |



Contractor Elite Series Indoor/Outdoor Wall-Mount Speakers

Contractor Elite is far from your common speaker line. Though designed to fit into your budget, these speakers are built with high-performance materials and features you'd find in high-end residential installations. The Contractor Elite Outdoor speaker line provides amazing sound, stylish looks, and easy installations – all for an amazing price.

SPCE5OW

5.25", white housing, 8 Ohms

SPCE5OB

5.25", black housing, 8 Ohms

SPCE6OW

6.5", white housing, 8 Ohms

SPCE6OB

6.5", black housing, 8 Ohms



Features:

- Great sound at an affordable price
- IP66 compliant, weather resistant
- Aluminum grille for extended use in outdoor environments
- "T" models come with a selectable 70V transformer
- 5 year warranty against manufacturing defects



All speakers sold in pairs

| Part Number | SPCE5OW | SPCE5OB | SPCE6OW | SPCE6OB |
|--------------------------|---|---|---|---|
| RMS Output Power | 40W | 40W | 60W | 60W |
| Max Output Power | 80W | 80W | 120W | 120W |
| Sensitivity (1W/1M) | 84dB | 84dB | 88dB | 88dB |
| Maximum SPL (Pmax/1M) | 100dB | 100dB | 102dB | 102dB |
| Driver Impedance | 8 Ohms | 8 Ohms | 8 Ohms | 8 Ohms |
| Frequency Response Range | 90Hz - 20kHz | 90Hz - 20kHz | 85Hz - 20kHz | 85Hz - 20kHz |
| Driver | 5.25" polypropylene woofer, 0.75" silk dome tweeter | 5.25" polypropylene woofer, 0.75" silk dome tweeter | 6.5" polypropylene woofer, 1" silk dome tweeter | 6.5" polypropylene woofer, 1" silk dome tweeter |
| Dimensions | 7" (L) x 5.5" (D) x 11.3" (H) | 7" (L) x 5.5" (D) x 11.3" (H) | 7.9" (L) x 6.6" (D) x 12.6" (H) | 7.9" (L) x 6.6" (D) x 12.6" (H) |
| Speaker Grille Material | Aluminum | Aluminum | Aluminum | Aluminum |
| Color | White | Black | White | Black |



Side



Front

Audio Speaker Support Brackets

BRC6E

Metal In-Ceiling Brackets for 6.5" speakers

BRC6F/BRC8F

Metal In-Ceiling Brackets for 6.5" or 8" speakers

BRC5/BRC6

Metal In-Ceiling Brackets for 5.25" or 6.5" speakers

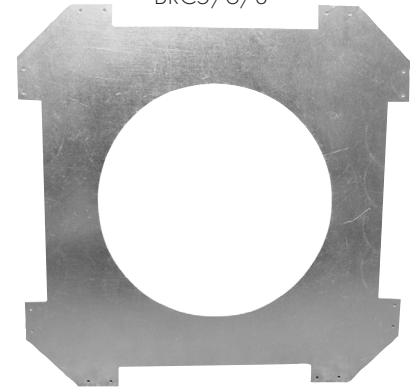
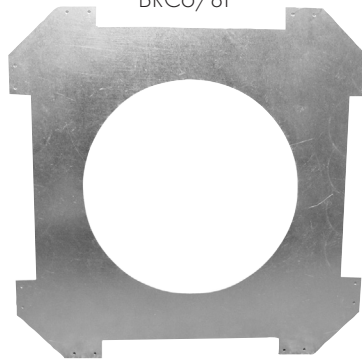
BRC8

Metal In-Ceiling Brackets for 8" speakers

All brackets sold in pairs

BRC5/6/8

BRC6/8F



All brackets manufactured from .025" thick galvanized steel

| Part Number | BRC6E | BRC6F | BRC8F | BRC5 | BRC6 | BRC8 |
|------------------------------|---|---|---|--|---|---|
| Description Dimensions | Metal In-Ceiling Brackets for 6.5" speakers | Metal In-Ceiling Brackets for 6.5" speakers | Metal In-Ceiling Brackets for 8" speakers | Metal In-Ceiling Brackets for 5.25" speakers | Metal In-Ceiling Brackets for 6.5" speakers | Metal In-Ceiling Brackets for 8" speakers |
| Outer Dimensions | 16.75", 2" support rails | 16.75", 2" support rails | 16.75", 2" support rails | 16.75", 2" support rails | 16.75", 2" support rails | 16.75", 2" support rails |
| Speaker Cut-Out | 10.625" | 8.38" | 9.88" | 6.63" | 7.75" | 9.5" |
| Compatible Speaker Models | SPCE6T | SP6ECS SP5MAT | SP8ECS SP6MAT | SPCBC5 | SPCBC6 SPCDC6 SPG66T SPG66TC | SPCBC8 SPG86T SPG86TC |

Attenuators, Volume Controls & Accessories

IMP100DLWH

100 Watt Impedance Matching Slider Volume Control



- High-quality auto-former design
- 1 – 8 speaker pairs
- Switchable impedance matching 2x, 4x, or 8x positions and stereo non-impedance matching 1x position
- Soft touch 12-step slide attenuation
- Frequency Response Range: 20Hz ~ 20kHz
- Removable terminal blocks accept up to 14-gauge wire
- Mounting Requirements: fits all single-gang backless p-rings or 19 cubic inch min. electrical work box
- Mounting Dimensions: 1.63" (W) x 2.74" (H) x 2.66" (D)



IMP80D

80 Watt Impedance Matching Rotary Volume Control



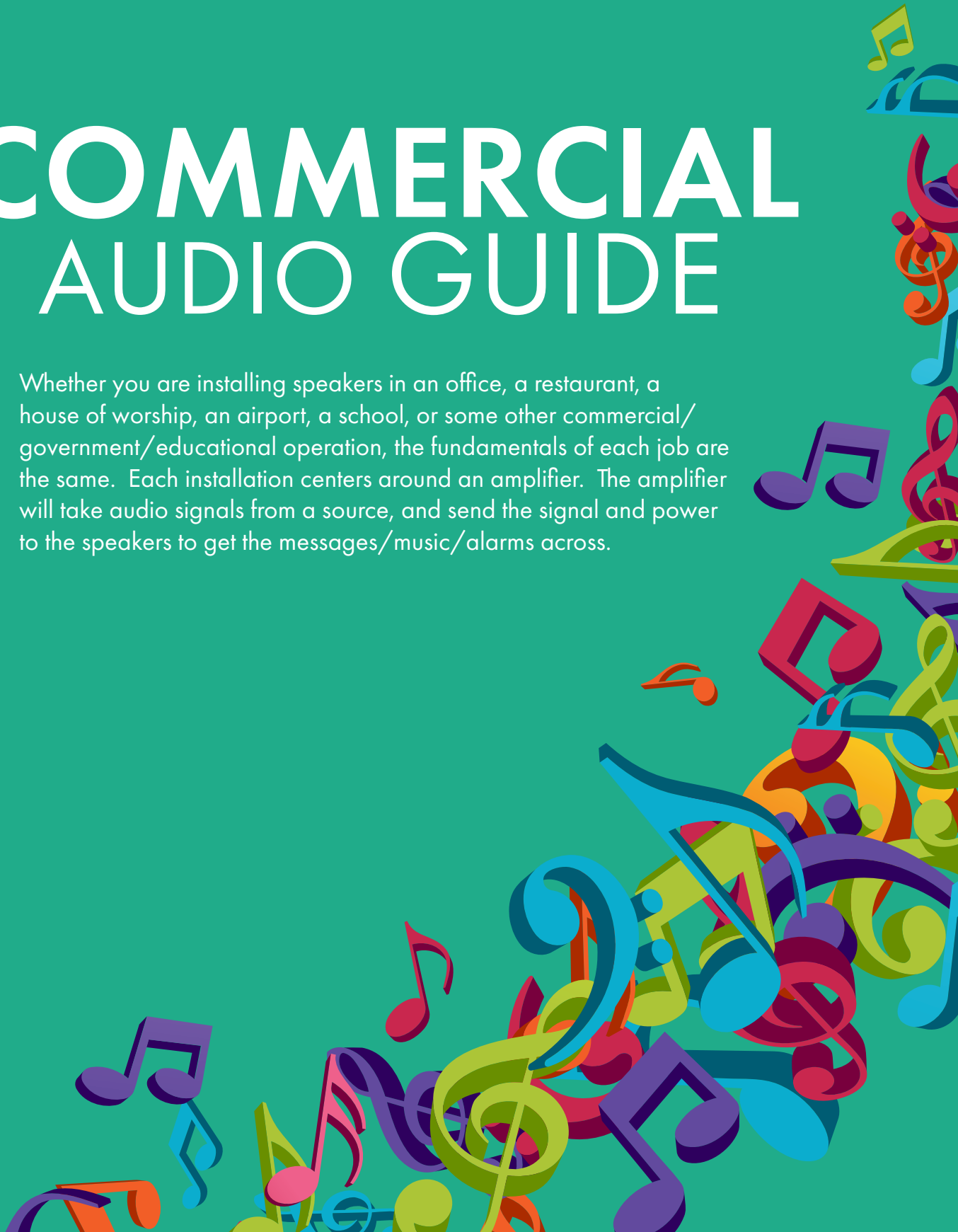
- Includes three knob/plate color variations: white, ivory and almond
- High-quality auto-former design
- 2 - 16 speaker pairs
- Switchable impedance matching for 2, 4, 8 or 16 pairs of 8 Ohms speakers
- Soft touch 12-step rotary attenuation
- Frequency Response Range: 20Hz ~ 20kHz
- Removable terminal blocks accept up to 14-gauge wire
- Mounting Requirements: fits all single-gang backless p-rings or 18 cubic inch min. electrical work box
- Mounting Dimensions: 1.63" (W) x 2.85" (H) x 2.35" (D)
- Optional outdoor kit available: VCODK1 (sold separately)





COMMERCIAL AUDIO GUIDE

Whether you are installing speakers in an office, a restaurant, a house of worship, an airport, a school, or some other commercial/government/educational operation, the fundamentals of each job are the same. Each installation centers around an amplifier. The amplifier will take audio signals from a source, and send the signal and power to the speakers to get the messages/music/alarms across.



Commercial Audio Overview

What Is a 70 Volt Sound System & What Is It Used For?

A 70 Volt Sound System is comprised of amplifiers, speakers with transformers, microphones, volume controls, a telephone system interface and an assortment of wires used as connections. It is generally used for commercial sound applications where there is a need for electronically amplifying and distributing sound for the functions of paging, playing music and/or pre-recorded messages to a commercial environment.

What Are The Components That Make Up a 70 Volt Sound System?

Centralized Amplifier: The central unit of a 70 Volt System is the amplifier that boosts the sound signal to be distributed to pre-established speakers or paging horn loudspeakers. There are power amplifiers, which are rack-mountable and have no external controls, and packaged amplifiers, which have pre-amp features such as volume controls, bass/treble controls, etc., that are built into the amplifier; making it a pre-amp and power amp all in one unit. Amplifiers have many diverse features and input and output connections. They can feature XLR MIC Connectors or MIC terminal strip connections, auxiliary/RCA inputs for music sources, and 600 Ohm telephone inputs. Most commercial amplifiers have speaker outputs for 4/8/16 Ohms and 70V systems. Most Speco Technologies amplifiers offer a 'Music-on-hold' output feature to allow customers on hold to hear music or prerecorded advertising.

Speakers: There are several different types of speakers including in-ceiling, in-wall, baffle and flush-mount cone speakers or horn loudspeakers. Optimal speaker selection for each installation depends on the application where the speaker is being used. It can also depend upon the size of the area needed to be covered, the ambient noise level of the environment, whether the speaker will be used for foreground/background music or voice, and whether the speaker will be used indoors or outdoors.

For 70 Volt Systems in commercial applications, the speakers must have a transformer mounted on it to be used.

Transformers: Transformers that are used on 70 Volt System speakers are step-down transformers that convert the high-voltage/low-current coming from the amplifier to the low-voltage/high-current signal going to the speaker. A transformer most often has multiple wattage taps that allow each speaker to be individually set as to how much wattage will enter the speaker and how loud each speaker will be. Transformers can be sold individually to be mounted on a speaker or premounted on a speaker.

Phone System Interface Device: These systems are used to connect a phone system to the speaker system via an amplifier for paging purposes.

Microphones: Located in the front end of the system, they will receive the delivered sound. Microphones are typically low impedance devices that require a shielded cable so as to not interfere with the amplifier or speaker wires.

Wires: Generally, speaker wire is determined by the length of the run and wattage utilized: For wire runs less than 50 ft. and 50 Watts of power or less use 16 gauge wire. For wire runs more than 50 ft. or over 50 Watts of power use 14 gauge wire.

Volume Controls/Attenuators:

Allow adjustment of volume to speakers.

What Are The Benefits of Using a 70 Volt Sound System?

A 70 Volt System uses a basis of high voltage to result in a lower current when distributing power to a sound system. Power equals voltage times current, thus a higher voltage will result in a lower current needed to arrive at a desired power load. By not having excessive, wasted current, **long runs of wire can be prevented from overheating.** This makes 70 Volt Systems very energy efficient. Many municipalities in America actually require the use of 25 Volt transformers because certain electrical codes will classify a 25 Volt system as low voltage, thus making it safer. Generally speaking, 70 Volt Systems are much more **cost efficient** than an 8 Ohm speaker system when dealing with volume installation of speakers. 70 Volt Systems are **easier to design** than 8 Ohm speaker systems. The impedance does not have to be matched throughout the 70 Volt system as it would on an 8 Ohm based system.

70 Volt Systems can have their speakers **daisy chained** in parallel together without

worry. Because 70 Volt speakers come with transformers, **impedance is not an issue** unless an excessive amount of speakers are going to be installed together. It is recommended to use multiple wire runs back to the amplifier as opposed to a single run. This will reduce location problems that occur and make it easier to find by isolating it on individual small speaker runs.

An easy calculation is all that is needed in determining the amount of wattage needed by your amplifier. Take the total wattage requirement of the 70 Volt speakers, or "load", include a 20% safety buffer to the upside and you will obtain the minimum RMS wattage.

70 Volt Systems allow the volume of each individual speaker in a specific area to be set using wattage taps. The higher the wattage taps are set on individual speakers, the more power the speaker consumes, the louder the speaker will be.

The speaker transformer serves as a safeguard to make sure individual speakers are not damaged by excessive wattage.

Designing a 70 Volt System: Which Type of 70V Speaker Should I Use?

In-Ceiling Speakers: Best utilized in 8, 10 & 12 ft. drop ceilings in professional environments with low noise levels. Great for background music and/or paging. Ceiling support brackets should be used with in-ceiling speakers.

Wall Baffle or Wall Mount Speakers: Best utilized when the ceiling's height is prohibitive to speaker placement and/or speakers can not be mounted on the ceiling at all.

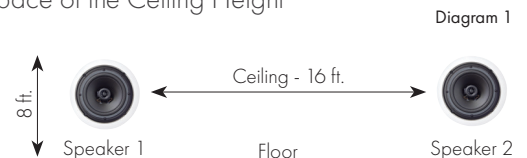
P.A. Horns: Horns are usually utilized in loud environments when distinct, and powerful paging messages are needed or when large areas must be covered. In addition, most P.A. Horns are weather-resistant and are used for outdoor applications such as loading docks and sports fields.

How Many Speakers Should I Use? Determining Proper Use Quantity For In-Ceiling Speakers:

The industry standard for calculating the proper amount of in-ceiling speakers for a specific area is to should have twice the space from the floor to the ceiling between the placement of each speaker on the ceiling, as shown in

Diagram 1:

Ceiling Speakers Should be Spaced Apart at Twice the Space of the Ceiling Height



For example, if your installation involves an 8 foot ceiling, then the speakers should be placed 16 feet apart on a square footage basis which equals 256 ft. of ceiling area covered. The square area coverage chart (below) shows specific ceiling heights.

Speaker Square Footage Coverage for Ceiling Heights

| Ceiling Height | Speaker Spacing (ceiling height x2) | Square Feet Coverage per Speaker |
|----------------|-------------------------------------|----------------------------------|
| 8 ft. | 16 ft. | 16 x 16 = 256 ft. |
| 10 ft. | 20 ft. | 16 x 16 = 400 ft. |
| 12 ft. | 24 ft. | 24 x 24 = 576 ft. |

You will notice, lowering the ceiling height results in the less square footage coverage per speaker, or the more speakers you will need. This is due to less downward space for sound dispersion before it reaches the listener. The following page contains a reference chart for determining the correct number of speakers needed for a specific area to assure proper dispersion of sound.

Commercial Audio Guide

Correct Number of In-Ceiling Speakers Needed
for Proper Sound Dispersion in Room Areas

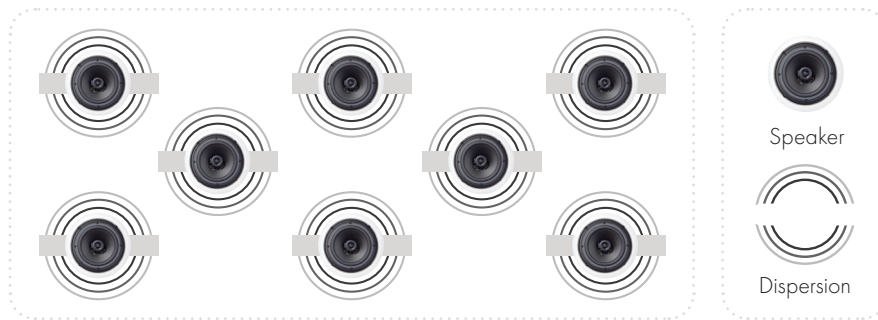
Length of Installment Room

| | | 10 | 15 | 20 | 25 | 30 | 35 | 40 | 50 | 60 | 70 | 80 | 90 | 100 | 110 | 120 | 130 | 140 | 150 | |
|---------------------------|--------------|--------------|----|----|----|----|----|----|----|----|----|----|----|-----|-----|-----|-----|-----|-----|----|
| Width of Installment Room | 10 | 8' Ceilings | 1 | 1 | 1 | 2 | 2 | 2 | 2 | 3 | 4 | 4 | 5 | 6 | 6 | 7 | 8 | 8 | 9 | 9 |
| | | 10' Ceilings | 1 | 1 | 1 | 1 | 2 | 2 | 2 | 3 | 3 | 4 | 4 | 5 | 5 | 6 | 6 | 7 | 7 | 8 |
| | | 12" Ceilings | 1 | 1 | 1 | 1 | 1 | 2 | 2 | 2 | 2 | 3 | 3 | 4 | 4 | 5 | 5 | 5 | 6 | 6 |
| | 15 | 8' Ceilings | 1 | 1 | 1 | 2 | 2 | 2 | 2 | 3 | 4 | 4 | 5 | 6 | 6 | 7 | 8 | 8 | 9 | 9 |
| | | 10' Ceilings | 1 | 1 | 1 | 1 | 2 | 2 | 2 | 3 | 3 | 4 | 4 | 5 | 5 | 6 | 6 | 7 | 7 | 8 |
| | | 12" Ceilings | 1 | 1 | 1 | 1 | 1 | 2 | 2 | 2 | 2 | 3 | 3 | 4 | 4 | 5 | 5 | 5 | 6 | 6 |
| | 20 | 8' Ceilings | 1 | 1 | 2 | 2 | 2 | 3 | 3 | 4 | 5 | 6 | 6 | 7 | 8 | 9 | 10 | 10 | 11 | 12 |
| | | 10' Ceilings | 1 | 1 | 1 | 1 | 2 | 2 | 2 | 3 | 3 | 4 | 4 | 5 | 5 | 6 | 6 | 7 | 7 | 8 |
| | | 12" Ceilings | 1 | 1 | 1 | 1 | 1 | 2 | 2 | 2 | 2 | 3 | 3 | 4 | 4 | 4 | 4 | 5 | 5 | 5 |
| | 25 | 8' Ceilings | 2 | 2 | 2 | 3 | 3 | 4 | 4 | 5 | 6 | 7 | 8 | 9 | 10 | 11 | 12 | 13 | 14 | 15 |
| | | 10' Ceilings | 1 | 1 | 1 | 2 | 2 | 2 | 3 | 3 | 4 | 4 | 5 | 6 | 6 | 7 | 8 | 8 | 9 | 9 |
| | | 12" Ceilings | 1 | 1 | 1 | 1 | 1 | 2 | 2 | 2 | 3 | 3 | 3 | 4 | 4 | 5 | 5 | 6 | 6 | 7 |
| | 30 | 8' Ceilings | 2 | 2 | 2 | 3 | 4 | 4 | 5 | 6 | 7 | 8 | 10 | 11 | 12 | 13 | 14 | 15 | 17 | 18 |
| | | 10' Ceilings | 2 | 2 | 2 | 2 | 2 | 3 | 3 | 4 | 5 | 5 | 6 | 7 | 8 | 8 | 9 | 10 | 11 | 11 |
| | | 12" Ceilings | 1 | 1 | 1 | 1 | 2 | 2 | 2 | 3 | 3 | 4 | 4 | 5 | 5 | 6 | 6 | 7 | 7 | 8 |
| | 35 | 8' Ceilings | 2 | 2 | 3 | 4 | 4 | 5 | 6 | 7 | 8 | 10 | 11 | 13 | 14 | 15 | 17 | 18 | 20 | 21 |
| | | 10' Ceilings | 2 | 2 | 2 | 2 | 3 | 3 | 4 | 4 | 5 | 6 | 7 | 8 | 9 | 10 | 11 | 11 | 12 | 13 |
| | | 12" Ceilings | 2 | 2 | 2 | 2 | 2 | 2 | 2 | 3 | 4 | 4 | 5 | 5 | 6 | 7 | 7 | 8 | 9 | 9 |
| | 40 | 8' Ceilings | 2 | 2 | 3 | 4 | 5 | 6 | 6 | 8 | 9 | 11 | 13 | 14 | 16 | 17 | 19 | 20 | 22 | 24 |
| | | 10' Ceilings | 2 | 2 | 2 | 3 | 3 | 4 | 4 | 5 | 6 | 7 | 8 | 9 | 10 | 11 | 12 | 13 | 14 | 15 |
| | | 12" Ceilings | 2 | 2 | 2 | 2 | 2 | 2 | 3 | 3 | 4 | 5 | 6 | 6 | 7 | 8 | 8 | 9 | 10 | 10 |
| | 50 | 8' Ceilings | 3 | 3 | 4 | 5 | 6 | 7 | 8 | 10 | 12 | 14 | 16 | 18 | 20 | 22 | 24 | 26 | 28 | 29 |
| | | 10' Ceilings | 3 | 3 | 3 | 3 | 4 | 4 | 5 | 6 | 8 | 9 | 10 | 11 | 13 | 14 | 15 | 16 | 18 | 19 |
| | | 12" Ceilings | 2 | 1 | 2 | 2 | 3 | 3 | 3 | 4 | 5 | 6 | 7 | 8 | 9 | 10 | 10 | 11 | 12 | 13 |
| | 60 | 8' Ceilings | 4 | 4 | 5 | 6 | 7 | 8 | 9 | 12 | 14 | 17 | 19 | 21 | 24 | 26 | 28 | 31 | 33 | 35 |
| | | 10' Ceilings | 3 | 3 | 3 | 4 | 5 | 5 | 6 | 8 | 9 | 11 | 12 | 14 | 15 | 17 | 18 | 20 | 21 | 23 |
| | | 12" Ceilings | 2 | 2 | 2 | 3 | 3 | 4 | 4 | 5 | 6 | 7 | 8 | 9 | 10 | 11 | 13 | 14 | 15 | 16 |
| | 70 | 8' Ceilings | 4 | 4 | 6 | 7 | 8 | 10 | 11 | 14 | 17 | 19 | 22 | 25 | 27 | 30 | 33 | 36 | 39 | 41 |
| | | 10' Ceilings | 4 | 4 | 4 | 4 | 5 | 6 | 7 | 9 | 11 | 12 | 14 | 16 | 18 | 19 | 21 | 23 | 25 | 26 |
| | | 12" Ceilings | 3 | 3 | 3 | 3 | 4 | 4 | 5 | 6 | 7 | 9 | 10 | 11 | 12 | 13 | 15 | 16 | 17 | 18 |
| 80 | 8' Ceilings | 5 | 5 | 6 | 8 | 10 | 11 | 13 | 16 | 19 | 22 | 25 | 28 | 31 | 35 | 38 | 41 | 44 | 47 | |
| | 10' Ceilings | 4 | 4 | 4 | 5 | 6 | 7 | 8 | 10 | 12 | 14 | 16 | 18 | 20 | 22 | 24 | 26 | 28 | 30 | |
| | 12" Ceilings | 3 | 3 | 3 | 3 | 4 | 5 | 6 | 7 | 8 | 10 | 11 | 13 | 14 | 15 | 17 | 18 | 19 | 21 | |
| 90 | 8' Ceilings | 6 | 6 | 7 | 9 | 11 | 13 | 14 | 18 | 21 | 25 | 28 | 32 | 35 | 39 | 42 | 46 | 49 | 53 | |
| | 10' Ceilings | 5 | 5 | 5 | 6 | 7 | 8 | 9 | 11 | 14 | 16 | 18 | 20 | 23 | 25 | 27 | 29 | 32 | 34 | |
| | 12" Ceilings | 4 | 4 | 4 | 4 | 5 | 5 | 6 | 8 | 9 | 11 | 13 | 14 | 16 | 17 | 19 | 20 | 22 | 23 | |
| 100 | 8' Ceilings | 6 | 6 | 8 | 10 | 12 | 14 | 16 | 20 | 24 | 27 | 31 | 35 | 39 | 43 | 47 | 51 | 55 | 59 | |
| | 10' Ceilings | 5 | 5 | 5 | 6 | 8 | 9 | 10 | 13 | 15 | 18 | 20 | 23 | 25 | 28 | 30 | 33 | 35 | 38 | |
| | 12" Ceilings | 4 | 4 | 4 | 4 | 5 | 6 | 7 | 9 | 10 | 12 | 14 | 16 | 17 | 19 | 21 | 23 | 24 | 26 | |
| 110 | 8' Ceilings | 7 | 7 | 9 | 11 | 13 | 15 | 17 | 22 | 26 | 30 | 35 | 39 | 43 | 47 | 52 | 56 | 60 | 65 | |
| | 10' Ceilings | 6 | 6 | 6 | 7 | 8 | 10 | 11 | 14 | 17 | 19 | 22 | 25 | 28 | 30 | 33 | 36 | 39 | 42 | |
| | 12" Ceilings | 5 | 5 | 4 | 5 | 6 | 7 | 8 | 10 | 11 | 13 | 15 | 17 | 19 | 21 | 23 | 25 | 27 | 29 | |
| 120 | 8' Ceilings | 8 | 8 | 10 | 12 | 14 | 17 | 19 | 24 | 28 | 33 | 38 | 42 | 47 | 52 | 56 | 61 | 66 | 70 | |
| | 10' Ceilings | 6 | 6 | 6 | 8 | 9 | 11 | 12 | 15 | 18 | 21 | 24 | 27 | 30 | 33 | 36 | 39 | 42 | 45 | |
| | 12" Ceilings | 5 | 5 | 4 | 5 | 6 | 7 | 8 | 10 | 13 | 15 | 17 | 19 | 21 | 23 | 25 | 27 | 29 | 31 | |
| 130 | 8' Ceilings | 8 | 8 | 10 | 13 | 15 | 18 | 20 | 26 | 31 | 36 | 41 | 46 | 51 | 56 | 61 | 66 | 72 | 78 | |
| | 10' Ceilings | 7 | 7 | 7 | 8 | 10 | 11 | 13 | 16 | 20 | 23 | 26 | 29 | 33 | 36 | 39 | 42 | 46 | 49 | |
| | 12" Ceilings | 5 | 5 | 5 | 6 | 7 | 8 | 9 | 11 | 14 | 16 | 18 | 20 | 23 | 25 | 27 | 30 | 32 | 34 | |
| 140 | 8' Ceilings | 9 | 9 | 11 | 14 | 17 | 20 | 22 | 28 | 33 | 39 | 44 | 49 | 55 | 60 | 66 | 72 | 77 | 82 | |
| | 10' Ceilings | 7 | 7 | 7 | 9 | 11 | 12 | 14 | 18 | 21 | 25 | 28 | 32 | 35 | 39 | 42 | 46 | 49 | 53 | |
| | 12" Ceilings | 6 | 6 | 5 | 6 | 7 | 9 | 10 | 12 | 15 | 17 | 19 | 22 | 24 | 27 | 29 | 32 | 34 | 37 | |
| 150 | 8' Ceilings | 9 | 9 | 12 | 15 | 18 | 21 | 24 | 29 | 35 | 41 | 47 | 53 | 59 | 65 | 70 | 76 | 82 | 88 | |
| | 10' Ceilings | 8 | 8 | 8 | 9 | 11 | 13 | 15 | 19 | 23 | 26 | 30 | 34 | 38 | 41 | 45 | 49 | 53 | 56 | |
| | 12" Ceilings | 6 | 6 | 5 | 7 | 8 | 9 | 10 | 13 | 16 | 18 | 21 | 23 | 26 | 29 | 31 | 34 | 37 | 39 | |

Commercial Audio Guide

Once the proper quantities of speakers are determined, they should be set in the ceiling with an alternating pattern as shown in Diagram 2:

Diagram 2: Ceiling Speaker Layout on Ceiling



Determining Proper Quantity of Wall Baffle Speakers:

The amount of Wall Baffle Speakers needed for an installation is calculated by taking the square footage of the area that needs coverage and dividing it by 600 square feet:

**Area of Square
Footage Required**

Divided by %

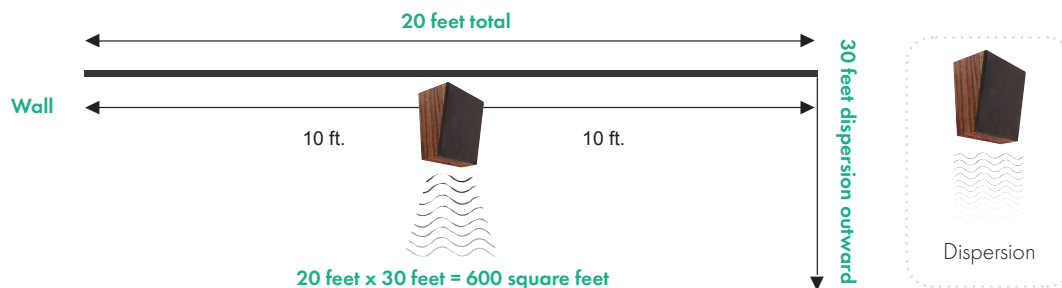
600 Square Feet

=

**Number of Wall
Baffle Speakers Required**

600 ft. is an average estimate and is arrived at, by taking the usual side sound dispersement of a wall baffle speaker, (10 ft. to each side) while taking into consideration the usual sound projection outward (30 ft. outward) as detailed by Diagram 3:

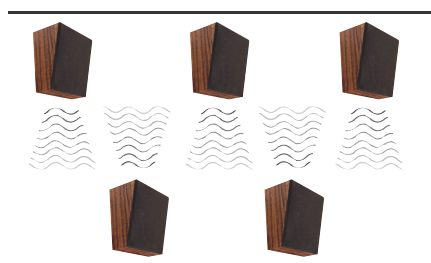
Diagram 3: Wall Baffle Speaker Dispersement View from Ceiling



Wall Baffle Speakers should, whenever possible, be pointed in the same direction. It is very important that wall baffle speakers should not be positioned directly across from each other on opposing walls when covering a large area of space as shown in Diagram 4:

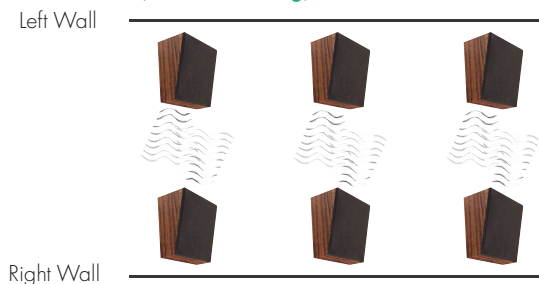
Diagram 4: Correct and Incorrect Placement of Wall Baffle Speakers

A) Correct Wall Baffle Speaker Placement (view from ceiling)



In scenario A there is proper dispersion and correct alignment.

B) Wrong Wall Baffle Speaker Placement (view from ceiling)



In scenario B there is an overlap of sound dispersion and distortion.



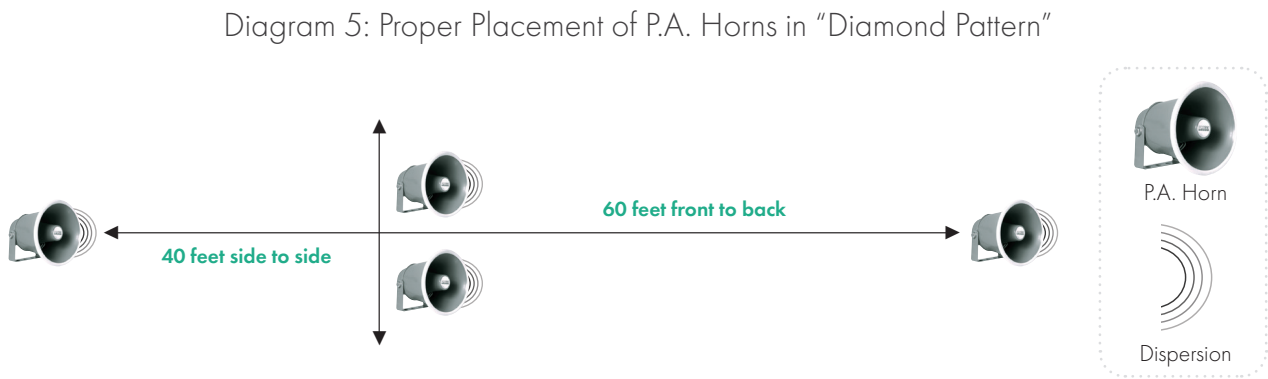
Commercial Audio Guide

Determining Proper Quantity Use For P.A. Horn Speakers:

The correct number of P.A. Horn Speakers can be determined by cross-referencing the square footage requirement and the type of noise environment. See chart below.

| | | Desired Square Footage of Coverage (in thousands) | | | | | | | | | | | | | | | | | | | | | | | | | | | | |
|--------------------------|----------|---|---|---|---|----|----|----|----|----|----|----|----|----|----|----|----|----|----|----|----|----|----|-----|-----|-----|-----|-----|-----|-----|
| Environment | dB Class | Example | 1 | 2 | 5 | 10 | 15 | 20 | 25 | 30 | 35 | 40 | 45 | 50 | 55 | 60 | 65 | 70 | 75 | 80 | 85 | 90 | 95 | 100 | 125 | 150 | 200 | 225 | 250 | 300 |
| Quiet Areas | <70 dB | Restaurant Department Store | 1 | 1 | 1 | 3 | 4 | 5 | 6 | 8 | 9 | 10 | 11 | 13 | 14 | 15 | 16 | 18 | 19 | 20 | 21 | 23 | 24 | 25 | 31 | 38 | 50 | 56 | 63 | 75 |
| Noisy Areas | 71-85 dB | Factory Assembly Line | 1 | 1 | 2 | 4 | 6 | 8 | 10 | 12 | 14 | 16 | 18 | 20 | 22 | 24 | 26 | 28 | 30 | 32 | 34 | 36 | 38 | 40 | 50 | 60 | 80 | 90 | 100 | 120 |
| Extremely Noisy Areas | >85 dB | Printing Press Metal Shop | 1 | 2 | 4 | 8 | 13 | 17 | 21 | 25 | 29 | 33 | 38 | 42 | 46 | 50 | 54 | 58 | 63 | 67 | 71 | 75 | 79 | 83 | 104 | 125 | 167 | 188 | 208 | 250 |

P.A. Horns should be placed at a height of 15 feet and positioned at a 60 degree angle towards the ground. P.A. Horns should NEVER be positioned facing each other. When multiple P.A. Horns are needed in a line, what is known as a “diamond pattern” should be used as shown in Diagram 5:



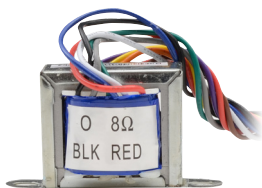
What Is The Purpose of a 70V Transformer on a Speaker?

A 70V transformer protects the speaker and only allows a certain wattage to pass through the transformer to activate the speaker depending on the sound requirement. The higher the wattage tap is set or wired, the louder the speaker will be. In addition, this transformer based system is current efficient by protecting the system from getting overheated from wasted power. Finally, a 70V transformer based system only requires the installer to make a quick calculation to obtain the required wattage needed for the system. Each speaker in the system is individually set at a certain tap. The wattage calculation requires adding all the tap requirements and then adding an increase of 20% as a safety buffer.

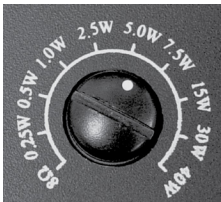
How Do I Wire a 70V Speaker?

Wiring a speaker with a 70 Volt transformer involves finding the correct colored wire extending from the transformer that corresponds with the desired wattage tap. Each colored wire’s individual wattage tap should be marked on the transformer. Once the proper wire is found, connect it to the positive wire running from the amplifier. Then find the common wire extending from the transformer, usually black, and connect it with a wire running back towards the amplifier.

Some speakers have a transformer dial for selecting a desired wattage. This makes setup very easy by already providing one positive wire and one common wire for connections. All that’s needed is to simply turn the transformer dial to the desired watt setting.



70V Transformer (T70255)



Transformer Dial

Commercial Audio Guide

Which Wattage Tap Should I Set My Horn or Speaker To?

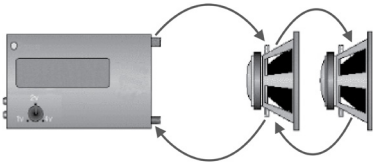
The chart to the right shows a basic guideline for wattage tap setting. This is simply for general reference. Each job must be looked at individually as there are many factors that go into determining the best wattage tap settings.

How Do I Wire a Commercial Run of Speakers?

Commercial Speakers should be wired in a "PARALLEL RUN", meaning the positive outbound connection of the amplifier or receiver should run to the positive terminal of the first speaker. Then from that positive terminal the wiring should proceed to the next speaker's positive terminal as detailed in Diagram 5 below. The return wiring from each common terminal goes to the next speaker on the return run's common terminal and finishes at the amplifier/receiver.

Diagram 6: Wiring Speakers in Parallel

Large runs with many speakers should be broken down into several smaller runs coming from the amplifier. If one speaker stops working it is easier to locate the problem if shorter runs are used instead of one continuous run.



What Wire Should I Use?

Generally, speaker wire is determined by the length of the run and the wattage utilized:

- Wire runs less than 50 feet and utilizing 50 Watts of power or less use 16 gauge wire.
- Wire runs more than 50 feet and/or over 50 Watts of power use 14 gauge wire.

When selecting your wire and line loss for length of speaker run, other specifications to consider are: UL Listing, Plenum Rating, weatherproofing, etc.

Speco Technologies has provided this information as an educational introduction to commercial sound systems.

Speco Technologies assumes no liability for any information within this guide section and/or any action that is taken based on the information contained here. Please consult licensed professionals when performing commercial sound installations.

Multizone Audio Streaming

Speco technologies now offers two units that enable multiroom audio streaming. The AA1 is an amplifier with a built-in streamer, while the AS1 is a streamer only.

AA1

This unit has two 8 Ohms outputs, and is intended to be a zone in small rooms such as offices, tanning rooms, examination rooms, classrooms, etc. You can wire one 8 Ohms speaker of up to 80W max to each output.

(Pic of AA1 showing two speakers coming out such as below)



AS1

This unit does not have an amplifier, and needs to be connected to an amplifier in order to provide the streaming ability. This can be done by utilizing the included RCA cable and connecting it to the Auxiliary input on most amplifiers.



| Noise Level | Decibel | Environment | Wattage Tap * |
|-------------|-----------|-------------------|---------------|
| Low | 55dB-64dB | Corporate Office | 0.25-2.5 |
| | | Doctor's Office | 0.5 |
| | | Classroom | 0.5-5 |
| | | Convenience Store | 1 |
| | | Department Store | 1-2.5 |
| Medium | 65dB-74dB | Restaurant | 2 |
| | | Warehouse | 2-10 |
| | | Hospital | 2-5 |
| | | Supermarket | 2-5 |
| High | 75dB-84dB | Bar | 5-20 |
| | | Factory | 7.5-40 |
| | | Assembly Line | 15-50 |
| Maximum | 85dB+ | Printing Press | 30+ |
| | | Metal Shop | 40+ |

*taps vary depending on ceiling height and ambient noise

Audio Product Warranties



AMPLIFIERS

These products are warranted against manufacturing defects in material and workmanship for **five (5) years** including parts and labor.



INDOOR SPEAKERS

These products are warranted against manufacturing defects in material and workmanship for the **lifetime** of the product, including parts and labor.



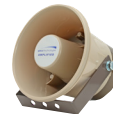
OUTDOOR SPEAKERS

These products are warranted against manufacturing defects in material and workmanship for **five (5) years** including parts and labor.



P.A. HORNS, MICROPHONES & VOLUME CONTROLS

These products are warranted against manufacturing defects in material and workmanship for **two (2) years** from date of purchase including parts and labor.



MEGAPHONES

These products are warranted against manufacturing defects in material and workmanship for **one (1) year** including parts and labor.



OTHER AUDIO ITEMS NOT COVERED ABOVE:

These products are warranted against manufacturing defects in material and workmanship for one (1) year including parts and labor.

We warranty all products to be free from any manufacturing or material defects. This warranty will not extend to any products which have been subjected to misuse, neglect, accident, or improper installation, used in violation of instructions furnished by us; or to units which have been repaired or altered outside of the factory. This limited warranty does not apply to broken cases, batteries, or other physically damaged parts. Upon request by the customer, the company will at the customer's expense repackage merchandise in new cartons, replace missing accessories, and return in resalable condition. Unless requested, the company will replace and return all merchandise in the packaging in which it was received. This warranty is in lieu of all expressed warranties, expressed or implied, and of all obligations or liability on our part, and we neither assume nor authorize any representative or other person to assume for us any obligation or liability. In no event shall we be liable for incidental or consequential damages arising from the use of the product, or for any delay in the use of this product do to causes beyond our control. Some states do not allow limitations of how long an implied warranty lasts and/or do not allow the exclusion or limitation of consequential damages. The above limitations on implied warranty and consequential damages may not apply to you. This warranty gives you specific legal rights. You may have other rights which vary from state to state. See actual warranty statement included with product for limitations and exclusions where applicable. This limited warranty extends to products listed in the company's current price schedule.

RETURNS

A written return authorization must be obtained prior to shipment. Label(s) must appear on all packages and return must be ship prepaid. Defective in-warranty products will be returned prepaid. Defective out-of-warranty products will be repaired at a nominal charge for parts and labor and returned with shipping charges added to the invoice. If you require an estimate before repair, please request.

RETURNED GOODS POLICY

1. RETURNS SENT WITHOUT PRIOR APPROVAL WILL NOT BE ACCEPTED. CREDIT WILL BE ISSUED UPON INSPECTION OF RETURNED UNITS.
2. No discounted item may be returned for credit or exchange.
3. An order of \$3.00 for every \$1.00 to be returned must accompany a request for return for stock adjustment.
4. There will be a minimum charge of 15% for handling and repacking where necessary. Merchandise returned for credit or exchange with missing or damaged packaging or accessories will be charged accordingly. Merchandise returned for repair will be shipped back repaired but in the same physical condition as when received by us. If repacking or refurbishing is requested, where possible, you will be charged accordingly.
5. If a credit is issued, current best quantity price or price when purchased, whichever is lower, will prevail.

Audio Glossary

Amp: The unit of measure used with an electric current.

Amplifier: An electronic component or device that takes low-level signals and recreates the signal with more power.

Baffle: A box-like structure that a speaker is placed into to enhance the bass sound of the speaker.

Bass: The lowest audible existing frequency range usually below 200Hz.

Bookshelf Speaker: A small speaker which is designed to sit on a bookshelf or shelf.

Capacitors: Electrical devices that store charges.

Coaxial Speaker: A type of speaker driver where the high frequency driver (the tweeter) is located inside a low or mid-frequency driver (the woofer).

Crossover: A component that splits up the frequency depending on ranges and directs them to certain drivers.

Current: The flow of electricity through a circuit as measured in amps.

dB Decibel: A logarithmic scale measuring the intensity of the sound pressure level of a noise.

Driver: The cone-like component of a speaker that pushes back and forth to sound waves.

Floor Standing Speaker: A specific type of speaker enclosure with an acceptable level of sound height that stands directly on the floor.

Frequency: The number of repeating sound cycles in a given period, measured in hertz or kilohertz. Human hearing is usually 20Hz to 20kHz with the lower frequencies representing the bass and higher

representing the treble.

Grille: An aesthetic front plate covering for speakers.

Horn: An element used to increase sound efficiency by placing the driver at the end of a megaphone-like structure.

Hz (Hertz): Number of cycles per second of sound waves used to measure frequency.

Impedance: The resistance to the flow of an electrical current as measured in Ohms.

kHz (kilohertz): One thousand sound cycles per second.

Magnet: A component of a speaker that uses electromagnets to create movement of the driver reproducing sound.

Microphone: A device used to create an electrical signal representative of the sound striking it to be heard over speakers.

Midrange: The middle band of audio frequencies between 150/200Hz to between 1,000/2,000Hz.

Music-on-hold Feature: An amplifier output feature which allows callers on a phone system that are holding to hear music or supplied dialog.

Ohm: A measure of resistance in a circuit to an electric current.

Outdoor Speaker: A speaker that is weather-resistant.

Power Rating: The maximum amount of power in watts that an amplifier can put out or a speaker can be driven with.

RMS (root mean square): The average continuous power output an amplifier is capable of producing or a speaker is capable of receiving.

Sensitivity or SPL: A measure of the sound pressure level measured from a distance of one meter from a speaker when the speaker receives a 2.83-volt signal - 1 watt at 8 ohm.

Three-way Speaker: A speaker system containing three individual drivers covering three frequency bands.

Transformer: An important component of the power supply that pulls electricity from a source and then transforms it into power that can be used in electronic devices.

Tweeter: A speaker driver designed for receiving high frequencies usually above 2,000Hz.

Two-way Speaker: A speaker system with two individual drivers covering two frequency bands.

Voice Coil: A tightly wrapped coil of wire attached to a speaker driver's diaphragm and located near the stationary magnet.

Watt: A measurement of power obtained by multiplying current by voltage.

Woofer: A speaker driver that handles low frequency signals.

XLR Connector: A plug connector usually at the end of a microphone wire that allows easy connection to an amplifier without the need to strip the wire to connect it to screw terminals.

Product Number Index

2WAK2..... 57
2WAK3..... 57
2WAK4..... 57

A

AA1..... 6, 72
AACEK1B..... 6
AACEK1W..... 6
AES4..... 41
AS1..... 6, 72
ASPBK1..... 6
ASPC20..... 58

B

BRC5..... 66
BRC6..... 66
BRC6E..... 66
BRC6F..... 66
BRC8..... 66
BRC8F..... 66

C

CAMMIC..... 49
CAMMIC2..... 49
CAMMICV..... 49
CAMMICW..... 49
CBS240..... 42
CBS4..... 41

D

DDAK4..... 57
DDK2..... 57
DDK3..... 57
DM520P..... 44
DMS3TS..... 40
DMS3TSW..... 40

E

ER370..... 19
ER370B..... 19
ER390UMB..... 20

G

G46TG..... 28
G86TCG..... 28
G86TG..... 23, 28
G86TG1X2..... 30
G86TG2X2..... 30
G86TG2X2C..... 30

H

HD2SPL2..... 48
HD4MAT..... 48
HD4SPL2..... 48
HDCL25..... 45
HDCL50..... 47
HDF2FCP..... 47
HDVL10..... 47
HDVL15..... 47
HDVL3..... 47
HDVL6..... 47
HDXTNDR..... 48

I

IMP100DLWH..... 66
IMP80D..... 66

M

MCA10..... 45
MCA20..... 45
MCDT300A..... 45
MCHH100A..... 44
MGS1..... 44
MGS1C..... 44
MHL5S..... 45
MSA1..... 45
MUHF101..... 43
MUHFHH..... 43
MUHFLP..... 43

P

P500A..... 13, 21
P60FACD..... 11, 21
PAT20TB..... 18, 21
PBM120A..... 8, 21
PBM120AT..... 8, 21
PBM120AU..... 8, 21
PBM240A..... 8, 21
PBM240AT..... 8, 21
PBM240AU..... 8, 21
PBM30..... 15, 21
PBM60A..... 8, 21
PBM60AT..... 8, 21
PBM60AU..... 8, 21
PL200M..... 12, 21
PL260A..... 14, 21
PMM120A..... 14, 15, 21
PMM60A..... 14, 15, 21
PSR4C..... 46
PVL15A..... 17, 21

S

SA15RP..... 56
SA4P..... 56
SA5P..... 56
SFA12..... 46
SFR12..... 46
SP30PT..... 34
SP30PTB..... 34
SP4AWET..... 38
SP4AWETW..... 38
SP525C..... 64
SP5MAT..... 26
SP5MATB..... 26
SP6OCT..... 25
SP6ECS..... 63
SP6MAT..... 23, 26
SP6MATB..... 26
SP6MAWT..... 26
SP6NXCTUL..... 23, 24
SP6PMNTB..... 35
SP6PTW..... 35
SPC10..... 51
SPC104..... 51
SPC10RT..... 53
SPC10T..... 52
SPC12RP..... 54
SPC15..... 51
SPC15R..... 54
SPC15RP..... 54
SPC15RT..... 53
SPC15T..... 52
SPC30RT..... 53
SPC30T..... 52
SPC40RP..... 55
SPC40RT..... 55
SPC5P..... 50
SPC6P..... 50
SPC8..... 50
SPCBC5..... 61
SPCBC6..... 61
SPCDC6..... 62
SPCE5OB..... 65
SPCE5OTW..... 39
SPCE5OW..... 65
SPCE6OB..... 65
SPCE6OTB..... 39
SPCE6OTW..... 39
SPCE6OW..... 65
SPCE8OTB..... 39
SPCE8OTW..... 39
SPCT8T..... 33
SPG66T..... 29
SPG66TC..... 29

SPG6MT..... 27
SPG86T..... 29
SPG86TC..... 29
SPIPC6A..... 4, 22
SPIPC6AM..... 4, 22
SPIPC8A..... 4, 22
SPIPC8AM..... 4, 22
SPIPC9AM..... 4, 22
SPP20T..... 36
SPRK65CBT..... 37
SPRK65CGT..... 37
SRD100..... 56
SRD80T..... 56
SRH2O..... 56
STH8..... 28

T

T2510..... 46
T7010..... 46
T7020..... 46
T70255..... 46
TS8..... 28

U

UTPAUDIO..... 49

V

VGAHD2..... 48

W

WAT10..... 59
WAT10DW..... 59
WAT50..... 59
WAT50DW..... 59
WAT100D..... 59
WB86T..... 23, 32
WBM6T..... 31
WBM6TA..... 31



follow us on
social media

DESIGNING A LARGE PROJECT FOR VIDEO SURVEILLANCE?

Speco's S.E.A.L. Team of surveillance professionals are here to assist!

- 1 Speco's Sales, Engineering, and Leadership Team made up of certified surveillance and audio experts is eager to help, **FREE** of charge!
- 2 Host live demos and webinars to show you how to get the most out of your Speco solutions!
- 3 Integrate custom surveillance access control, and commercial audio applications that fit **YOUR** needs!
- 4 Gain access to this exclusive complimentary service when you purchase Speco Products!



MEET THE TEAM LEADERS!



Click or scan
QR code to
watch video



Justin
Taylor



Timothy
O'Brien

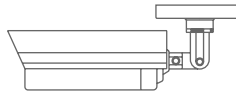
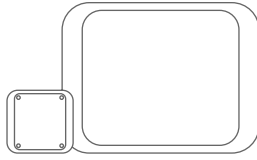
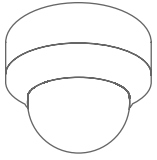


Phil
Benanti

For more info visit us at specotech.com or call 1.800.645.5516

WANT MORE?

visit www.specotech.com to
learn more about our products



Speco Technologies has always been an innovator in providing the best possible Audio solutions to our customers. In today's competitive audio market, most companies don't survive without a strong commitment to their customers, and the constant introduction of innovative, quality products at a superior price. It's those very principles that Speco Technologies was founded on, and more than 60 years later, will continue to follow these same principles to make sure our customers know we care.



speco
technologies

Contact us at
1.800.645.5516 or
orders@specotech.com

