



IP Encoder Quick Start Guide



OS103T

1 Warnings

- If the product does not work properly, please contact the dealer or where the product was purchased. Speco Technologies is not responsible for any problems caused by improper operation or repair.
- Keep away from liquid while in use.
- All installation and operation here should conform to local electrical safety codes.
- Do not use the device beyond specified voltage range.
- Do not drop it or subject it to physical shock.
- Do not place it in extremely hot or cold (the operating temperature shall be $-20^{\circ}\text{C}\sim 55^{\circ}\text{C}$), dusty and damp locations. Do not expose it to highly electromagnetic radiation.
- To avoid heat accumulation, good ventilation is required for operating environment.

2 Package



Device



Quick Start Guide



CD



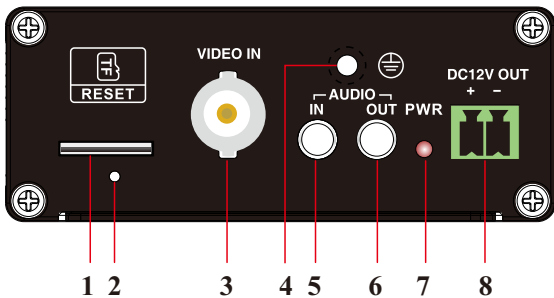
4 tapping screws PA 4×25



Plastic plug ×4

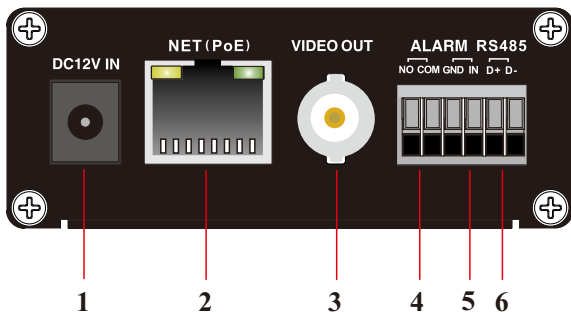
3 Overview

● Front Panel

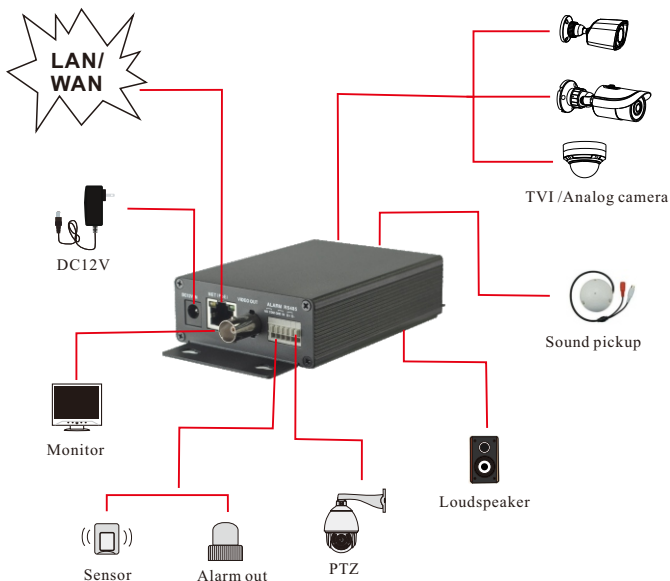


1	Micro SD card slot	5	Audio input
2	Reset	6	Audio output
3	Video input (TVI/Analog)	7	Power indicator
4	Ground	8	DC12V power output

● Rear Panel



1	DC12V power input	4	Alarm output
2	PoE network interface	5	Alarm input
3	Analog video output	6	RS 485 interface

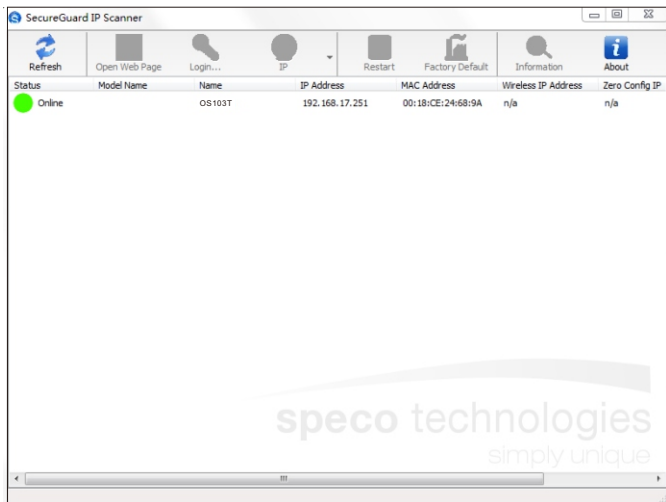


5 Web Operation and Login

IP Scanner can search for the device on the local network.

● Operation

- ① Make sure that the IP encoder and the PC are connected to the same local network. The IP encoder is set to DHCP by default.
- ② Install IP Scanner from the CD and run it after installation.



③ In the device list, you can view the IP address, model number, and MAC address of each device. Select the applicable device and double click to open up the web viewer. You can also manually enter the IP address in the address bar of the web browser.

speco technologies

Username

Password

Login Cancel

The login interface is shown above. Default user name is admin and password is 1234. After logging in, follow directions to install applicable plugins.