



Quick Start Guide

08LMST1



Welcome

Thank you for purchasing this network camera!

This owner's manual is designed to be a reference tool for your system.

Please read this manual carefully before operating the unit and retain it for future reference.

Should you require any technical assistance, contact Speco Technologies Tech Support at 1-800-645-5516

Important Safeguards and Warning

1. Electrical safety

All installation and operation here should conform to local electrical safety codes.

Use a certified/listed 12VDC Class 2 power supply or adequate PoE switch.

Please note: The product must be grounded to reduce the risk of electric shock.

Improper handling and/or installation could run the risk of fire or electrical shock.

2. Environment

Do not expose the unit to heavy stress, violent vibration or long-term exposure to water and humidity during transportation, storage, and/or installation.

Do not install near sources of heat.

Only install the product in environments inside the specification operating temperature and humidity range.

Do not install the camera near power lines, radar equipment or other electromagnetic radiation.

Do not block any ventilation openings if any.

Use all the weatherproofing hardware requirement to minimize weather intrusion.

3. Operation and Daily Maintenance

Please shut down the device and then unplug the power cable before you begin any maintenance work.

Do not touch the CMOS sensor optic component. You can use a blower to clean the dust on the lens surface.

Always use the dry soft cloth to clean the device. If there is too much dust, use a cloth dampened with a small quantity of neutral detergent. Finally use the dry cloth to clean the device.

Please use a professional optical cleaning method to clean the enclosure. Improper enclosure cleaning (such as using cloth) may result in poor LED functionality and/or LED reflection. The grounding holes of the product are recommended to be grounded to further enhance the reliability of the camera.

The lens is an optical device, please don't touch or wipe cover surface directly during installation and use, please refer to the following methods if dirt is found:

Stained with dirt: Use oil-free soft brush or hair dryer to remove it gently.

Stained with grease or fingerprint: Use oil-free cotton cloth or paper soaked with alcohol or detergent to wipe from the lens center outward. Change the cloth and wipe several times if it is not clean enough.

Warning

This camera should be installed by qualified personnel only.

All the examination and repair work should be done by qualified personnel.

Any unauthorized changes or modifications could void the warranty.

This device may potentially trigger seizures for people with photosensitive epilepsy.

This device may emit loud audible alarms, check your local laws before enabling audio.

Statement

This guide is for reference only.

Product, manuals and specifications may be modified without prior notice. Speco Technologies reserves the right to modify these without notice and without incurring any obligation.

Speco Technologies is not liable for any loss caused by improper operation.

Note:

Before installation, check the package and make sure that all components are included. Contact your rep or Speco customer service department immediately if something is broken or missing in the package.

1 Package



Camera



Quick start guide



CD



Screwdriver



Adapter



4 Screws
(6.5×38mm)



4 Screws
(PA 4×25mm)



4 Screws
(PM 4×10mm)



4 Rubber o-rings
for screws



Junction box



8 Plastic screw anchors

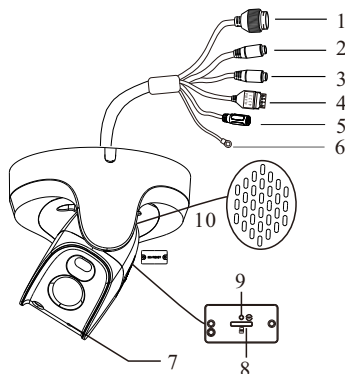


Water-proof connector kit



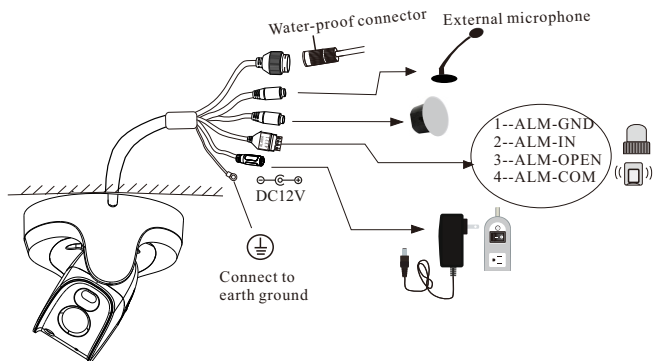
Drill template

2 Overview



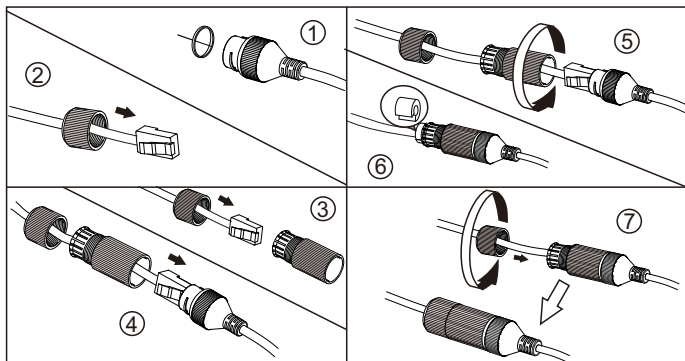
- 1 Ethernet connector (PoE+)
- 2 MIC-Audio input (3.5mm)
- 3 HP-Audio output (3.5mm)
- 4 Alarm input/output
- 5 DC12V Power jack
- 6 Ground
- 7 Microphone
- 8 Memory Card Slot
- 9 Reset*
- 10 Speaker

*Reset: After the camera is powered on, press and hold the reset button for more than 5s to reset to the factory default settings.



*** It is recommended to install the water-proof connector for outdoor installations.**

► Connecting Network Cable

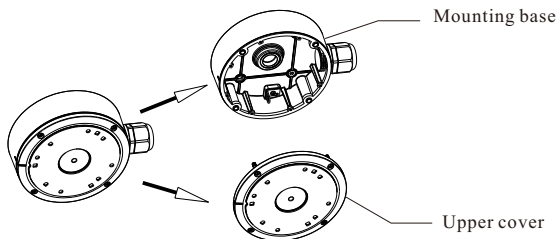


*** If the RJ 45 connector of the network cable has a jacket and cannot be threaded through the kit, remove the jacket. If the jacket cannot be removed, cut off the connector and install an RJ 45 connector without the jacket.**

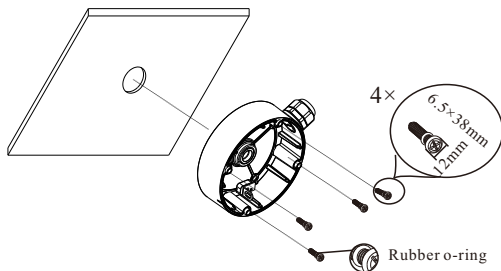
3 Installation

* Before you start, please make sure that the wall or ceiling is strong enough to withstand three times the weight of the camera and junction box.

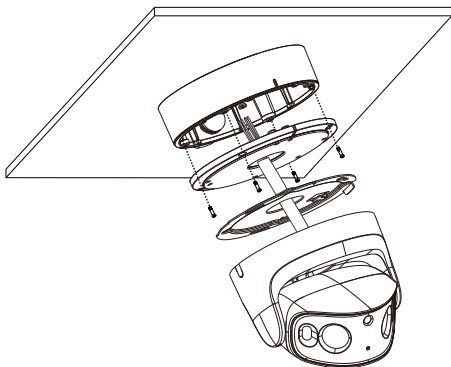
1. Open the mounting base and the upper cover of the junction box.



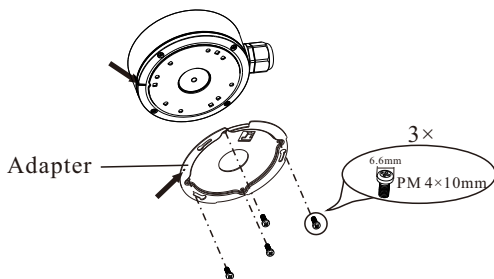
2. Install the mounting base of the junction box onto the wall by using the screws provided.



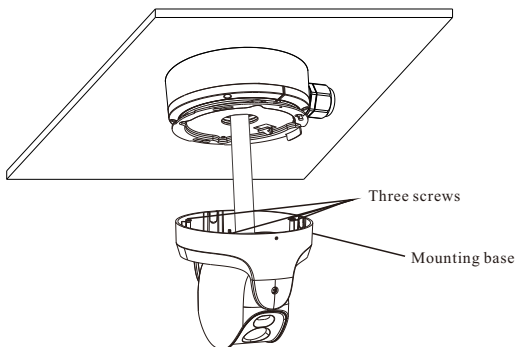
3. Route the cables through the cable hole and connect the cables.
Then reinstall the upper cover onto the junction box.



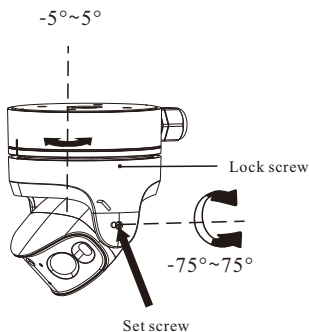
4. Align the marks indicated by the arrows and then fasten the adapter onto the upper cover of the junction box.



5. Align the three screw holes of the adapter with the three screws of the camera (below) and then put these screws into these screw holes. After that, turn the mounting base clockwise to secure the camera.



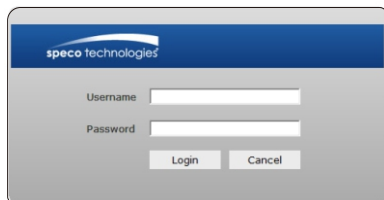
6. Loosen the set screw on the side and then adjust the viewing angle of the camera. Finally, tighten the set screw and the lock screw.



4 Web Operation and Login

• Operation

- ① Make sure that the camera and the PC are connected to the same local network. The camera is set to DHCP by default.
- ② Install Speco Blue Scanner and run it after installation. Speco Blue Scanner is the tool for discovering the IP cameras on the local network. It can be downloaded from www.specotech.com.
- ③ In the device list, you can view the IP address, model number, and MAC address of each device. Select the applicable device and double click to open up the web viewer. You can also manually enter the IP address in the address bar of the web browser.

The image shows a web-based login interface for Speco Technologies. It features a blue header bar with the 'speco technologies' logo. Below the header, there are two input fields: 'Username' and 'Password'. At the bottom of the form, there are two buttons: 'Login' and 'Cancel'.

The login interface is shown above. Default user name is admin and password is 1234. After logging in, follow directions to install applicable plugins if prompted.