



Quick Start Guide

02BLP2M



Welcome

Thank you for purchasing this network camera!

This owner's manual is designed to be a reference tool for your system.

Please read this manual carefully before operating the unit and retain it for future reference.

Should you require any technical assistance, contact Speco Technologies Tech Support at 1-800-645-5516

Important Safeguards and Warning

1. Electrical safety

All installation and operation here should conform to local electrical safety codes.

Use a certified/listed 12VDC Class 2 power supply or adequate PoE switch.

Please note: The product must be grounded to reduce the risk of electric shock.

Improper handling and/or installation could run the risk of fire or electrical shock.

2. Environment

Do not expose the unit to heavy stress, violent vibration or long-term exposure to water and humidity during transportation, storage, and/or installation.

Do not install near sources of heat.

Only install the product in environments inside the specification operating temperature and humidity range.

Do not install the camera near power lines, radar equipment or other electromagnetic radiation.

Do not block any ventilation openings if any.

Use all the weatherproofing hardware requirement to minimize weather intrusion.

3. Operation and Daily Maintenance

Please shut down the device and then unplug the power cable before you begin any maintenance work.

Do not touch the CMOS sensor optic component. You can use a blower to clean the dust on the lens surface.

Always use the dry soft cloth to clean the device. If there is too much dust, use a cloth

dampened with a small quantity of neutral detergent. Finally use the dry cloth to clean the device.

Please use a professional optical cleaning method to clean the enclosure. Improper enclosure cleaning (such as using cloth) may result in poor IR functionality and/or IR reflection.

The grounding holes of the product are recommended to be grounded to further enhance the reliability of the camera.

Warning

This camera should be installed by qualified personnel only.

All the examination and repair work should be done by qualified personnel.

Any unauthorized changes or modifications could void the warranty.

Statement

This guide is for reference only.

Product, manuals and specifications may be modified without prior notice. Speco Technologies reserves the right to modify these without notice and without incurring any obligation.

Speco Technologies is not liable for any loss caused by improper operation.

Note:

Before installation, check the package and make sure that all components are included. Contact your rep or Speco customer service department immediately if something is broken or missing in the package.

1 Package



Camera



Quick start guide



CD



Screwdriver



Drill template



4 Screws
(6.5×38mm)



8 Plastic screw
anchors



4 Screws
(PM 4×10mm)



CVBS&DC
IN cables



4 Screws (PA 4×25mm)
1 Screw (PWM3×5mm)

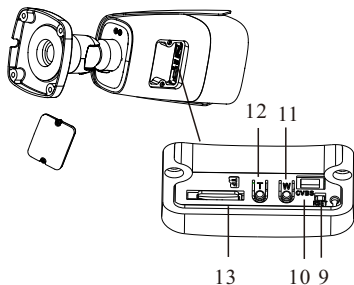
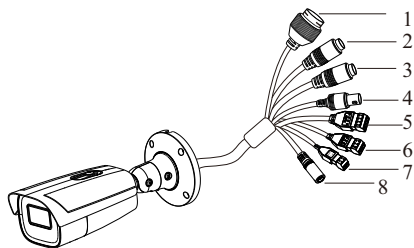


4 Rubber o-rings
for screws

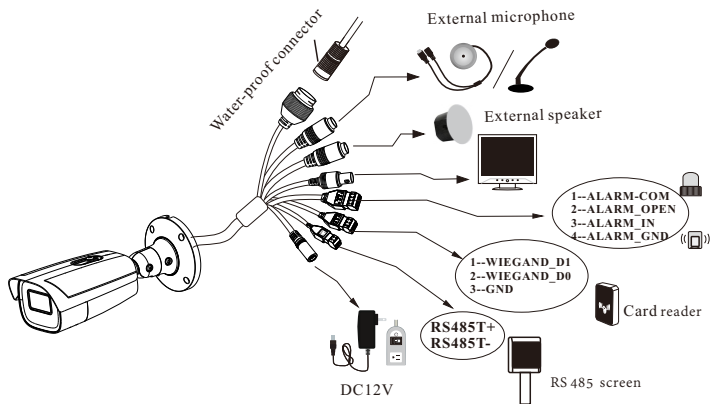


Junction box

2 Overview

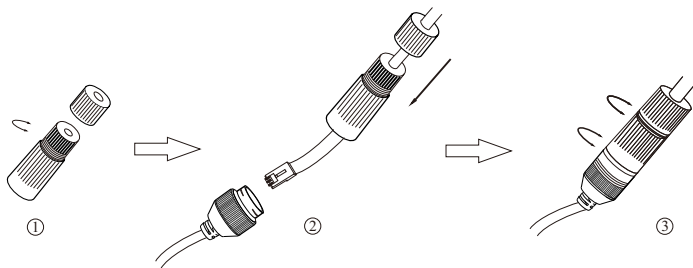


- 1 Ethernet Connector*
- 2 Audio Input (MIC)
- 3 Audio Output (HP)
- 4 CVBS Video Output
- 5 Alarm Input/Output
- 6 Wiegand interface
- 7 RS 485
- 8 Power Connector
- 9 Reset
- 10 DC IN&CVBS Interface
- 11 Zoom -
- 12 Zoom +
- 13 Micro SD Card Slot



* It is recommended to install the water-proof connector for outdoor installations.

● Connecting Network Cable



① Loosen the nut from the main element.

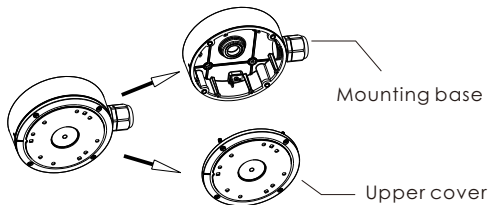
② Run the network cable (without RJ 45 connector) through both elements. Then crimp the cable with RJ 45 connector.

③ Connect the cable to the water-proof connector. Then tighten the nut and the main cover.

3 Installation

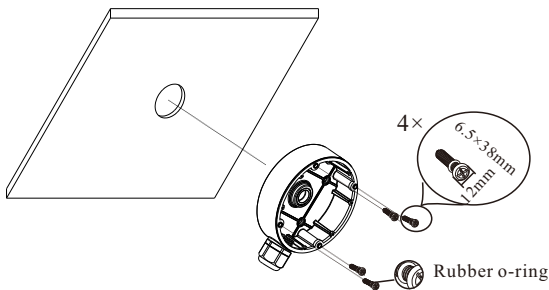
* Before you start, please make sure that the wall or ceiling is strong enough to withstand three times the weight of the camera.

Open the mounting base and the upper cover of the junction box.

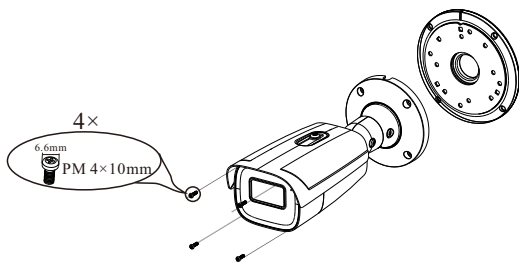


Attach the drill template of the junction box to the place where you want to install the junction box and then drill the screw hole and cable hole on the wall according to the drill template.

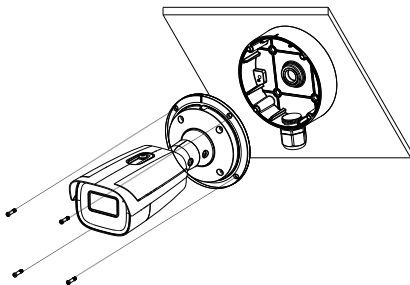
Install junction box onto the wall by using the screws provided.



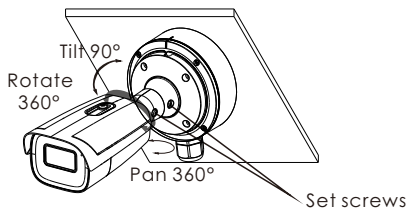
- ④ Fasten the mounting base of the camera to the upper cover of the junction box.



⑤ Route the cables through the cable hole and connect the camera. Then install the camera onto the mounting base of the junction box.



⑥ Three-axis Adjustment-Before adjustment, preview the image of the camera on a monitor and then loosen the set screws to adjust the camera according to the figure below to get an optimum angle.



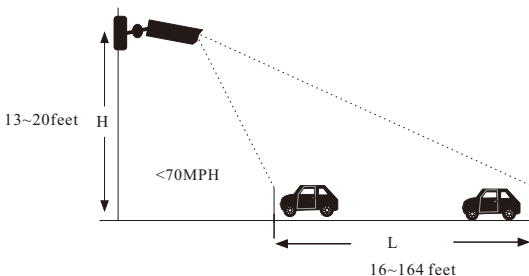
Configuration requirements of camera and surrounding area

Note: The following installation requirements are based on optimum conditions, your license capture rate may vary depending on lighting, position, license plate designs and other factors.

- The monitoring image shall try to cover the lane, entering/exiting vehicles and these vehicles' plate number shall be always seen in the video.
- Try to avoid the objects that will block the camera, such as pillars, obstacles, doors, etc.
- Avoid the scenes with many trees or other moving objects (like humans, non-motor vehicles).
- The monitoring road shall be straight within 165ft in front of/behind the location of the camera installation and make sure the camera points at the front or rear of the vehicle.

Overhead Monitoring

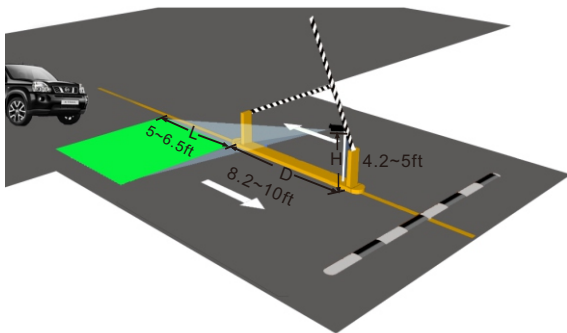
- The installation height (H) shall range from 13 ~ 20ft.
- The recognition distance shall range from 2~164ft.
- The recommended recognition distance (L) shall be from 16 ~ 164ft.



- The depression angle of the camera shall range from 15° to 20° .
- If the camera is installed on the side of the road, the pan angle of the camera shall range from 0° to 20° .
- If the camera is installed right above the middle of the road, the pan angle of the camera shall range from -10° to 10° .

Entrance & Exit Monitoring

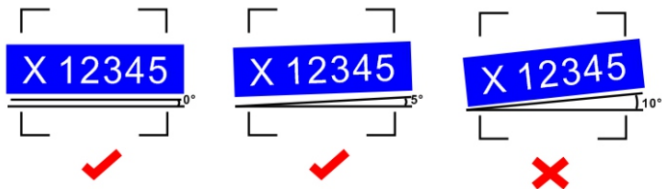
- The installation height (H) shall range from 4.2ft to 5ft.
- The distance D (between the location of the camera installation and the captured area) shall range from 8.2ft to 10ft.
- The distance of the captured area (L) shall be from 5ft to 6.5ft.



- The depression angle of the camera shall range from 0° to 5° .
- The pan angle of the camera shall range from 5° to 20° .

The tilt angle of the license plate

After the camera is installed, you can log in the web client and view whether the license plate tilts in the video. The tilt angle shall range from -5° to 5° .



If the captured license plate doesn't meet the above requirement, you can adjust the pan angle of the camera to correct it.

4 Web Operation and Login

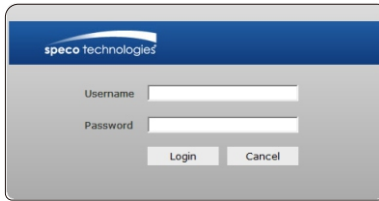
IP Scanner can search for the device on the local network.

• Operation

- ① Make sure that the camera and the PC are connected to the same local network. The camera is set to DHCP by default.
- ② Install IP Scanner from the CD and run it after installation. Or download from <https://www.specotech.com/ip-scanner/>

SecureGuard IP Scanner						
Refresh	Open Web Page	Login...	IP	Restart	Factory Default	Information
About						
Status	Model Name	Name	IP Address	MAC Address	Wireless IP Address	Zero Config IP
Online		O2BLP2M	192.168.17.251	5C:F2:07:24:68:B9	n/a	n/a

- ③ In the device list, you can view the IP address, model number, and MAC address of each device. Select the applicable device and double click to open up the web viewer. You can also manually enter the IP address in the address bar of the web browser.

The image shows a login window for Speco Technologies. It has a blue header bar with the company logo. Below the header, there are two input fields: one for 'Username' and one for 'Password'. At the bottom, there are two buttons: 'Login' and 'Cancel'.

speco technologies

Username

Password

Login Cancel

The login interface is shown above. Default user name is admin and password is 1234. After logging in, follow directions to install applicable plugins if prompted.