



# **Quick Start Guide**

## **08P32X**



# Welcome

Thank you for purchasing this PTZ camera!

This owner's manual is designed to be a reference tool for your system.

Please read this manual carefully before operating the unit and retain it for future reference.

Should you require any technical assistance, contact Speco Technologies Tech Support at 1-800-645-5516

## Important Safeguards and Warning

### 1. Electrical safety

All installation and operation here should conform to local electrical safety codes.

Use the included PoE++ injector or a certified/listed 24VDC 2.5A Class 2 power supply (not included) or adequate PoE++ (802.3bt) switch.

Please note: The product must be grounded to reduce the risk of electric shock.

Improper handling and/or installation could run the risk of fire or electrical shock.

### 2. Environment

Do not expose the unit to heavy stress, violent vibration or long-term exposure to water and humidity during transportation, storage, and/or installation.

Do not install near sources of heat.

Only install the product in environments inside the specification operating temperature and humidity range.

Do not install the camera near power lines, radar equipment or other electromagnetic radiation.

Do not block any ventilation openings if any.

Use all the weatherproofing hardware requirement to minimize weather intrusion.

### 3. Operation and Daily Maintenance

Please shut down the device and then unplug the power cable before you begin any maintenance work.

Do not touch the CMOS sensor optic component. You can use a blower to clean the dust on the lens surface.

Always use the dry soft cloth to clean the device. If there is too much dust, use a cloth

dampened with a small quantity of neutral detergent. Finally use the dry cloth to clean the device.

Please use a professional optical cleaning method to clean the enclosure. Improper enclosure cleaning (such as using cloth) may result in poor IR functionality and/or IR reflection.

The grounding holes of the product are recommended to be grounded to further enhance the reliability of the camera.

## **Warning**

This camera should be installed by qualified personnel only.

All the examination and repair work should be done by qualified personnel.

Any unauthorized changes or modifications could void the warranty.

## **Statement**

This guide is for reference only.

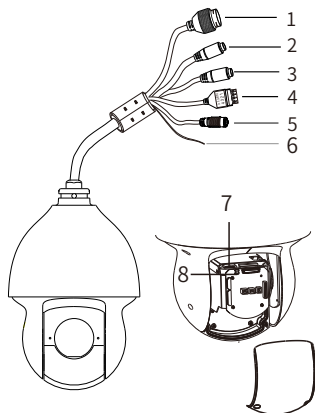
Product, manuals and specifications may be modified without prior notice. Speco Technologies reserves the right to modify these without notice and without incurring any obligation.

Speco Technologies is not liable for any loss caused by improper operation.

### **Note:**

Before installation, check the package and make sure that all components are included. Contact your rep or Speco customer service department immediately if something is broken or missing in the package.

# 1 Overview



- 1 Ethernet connector
- 2 MIC-Audio input (3.5mm)
- 3 HP-Audio output (3.5mm)
- 4 Alarm input/output
- 5 DC24V power jack
- 6 Ground
- 7 Memory card slot
- 8 Reset

## 2 Installation



**Please make sure the wall is strong enough to bear the dome camera's weight. Please make sure the camera is powered off during installation.**

### ◆ Install SD Card

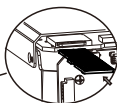




Screw



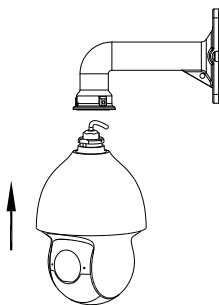
Insert an SD card



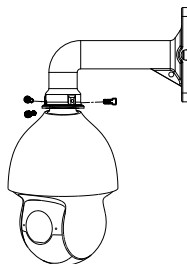
① Loosen the two screws of the dome.

② Open the cover and insert an SD card.

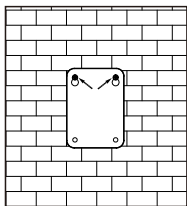
## ◆ Wall Mounting



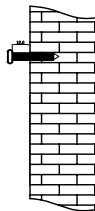
① Pull the cables through the bracket. Mount the speed dome to the bracket.



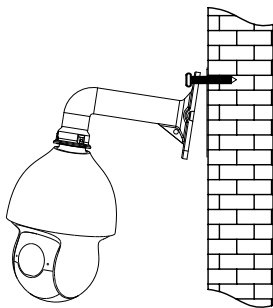
② Secure the speed dome to the bracket with the screws.



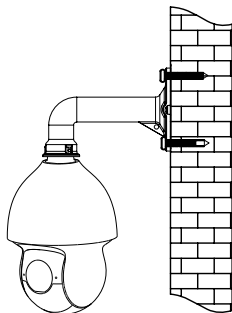
③ Drill the screw holes on the wall according to the drill template. Then insert the plastic screw anchors into the holes.



④ Drive the two screws to the holes indicated by the arrows (left) and leave 12mm clearance.

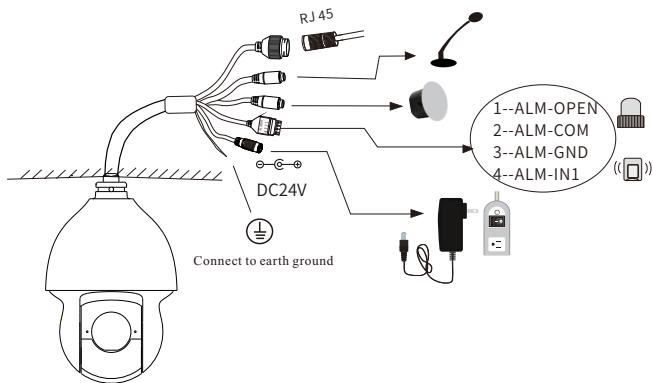


⑤ Connect the cables and then hang the bracket on the wall.

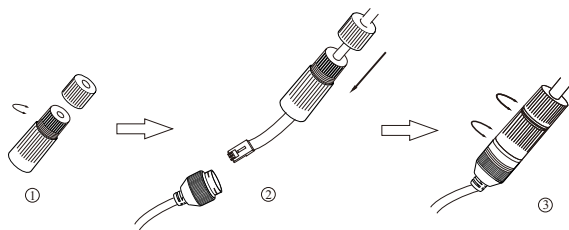


⑥ Fasten the bracket to the wall with four screws.

### 3 Cable Connection



#### ● Connecting Network Cable



① Loosen the nut from the main element.

② Run the network cable (without RJ45 connector) through the both elements. Then crimp the cable with RJ45 connector.

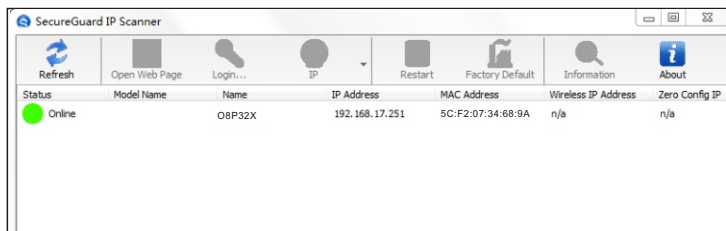
③ Connect the cable to the Ethernet connector. Then tighten the nut and the main cover.

## 4 Web Operation and Login

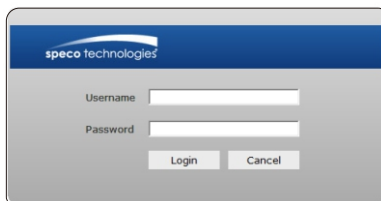
IP Scanner can search for the device on the local network.

### • Operation

- ① Make sure that the camera and the PC are connected to the same local network. The camera is set to DHCP by default.
- ② Install IP Scanner from the CD and run it after installation. Or download from <https://www.specotech.com/ip-scanner/>



- ③ In the device list, you can view the IP address, model number, and MAC address of each device. Select the applicable device and double click to open up the web viewer. You can also manually enter the IP address in the address bar of the web browser.



The login interface is shown above. Default user name is admin and password is 1234. After logging in, follow directions to install applicable plugins if prompted.