



2MP IP License Plate Recognition Camera with Junction Box

O2BLP2M

5 - 50mm motorized lens, white housing

Features

- Captures License Plates up to 40mph*
- Search and Match Captured Plates with Recorder*
- Captures up to 2MP @ 30fps (60fps in High Frame Rate Mode)
- Built-in Standard PoE (IEEE 802.3af)
- Smart IR with Range up to 330' (Depending on Scene Reflection)
- Micro SD Card Slot up to 256GB (Card Not Included)
- Two-way Audio Support
- Alarm Input/Output
- Conformant with ONVIF G/S/T
- IP67 Weather Resistance
- Junction Box Included (Works with NPT/BSP Specification)

*In Optimal Conditions

**With Compatible Speco NR Series Recorder



Junction Box Included



Capture & Recognize Vehicle Plates



Camera Specifications

| | |
|------------------------------|---|
| Image Sensor | 1/2.8" Progressive Scan CMOS |
| Maximum Resolution | 1920 x 1080 (2MP) |
| Field of View | H:49°~5.5°, V:26.8°~3.1°, D:57°~5.3° |
| Minimum Illumination | 0.005 lux @ F1.6, AGC ON; 0 lux with IR |
| Day/Night | Smart IR |
| White Balance | Auto, Indoor, Outdoor, Manual |
| Electronic Shutter Speed | 1/3s - 1/100000s |
| DNR | 3D DNR |
| Angle Adjustment | Pan: 0°~360°; Tilt:0°~90°; Rotation: 0°~360° |
| Recommended Capture Distance | 15 - 200 ft. |

Video Specifications

| | |
|--------------------|---|
| Main Resolution | 1080P / 720P (1 ~ 30fps); HFR Mode: 1080P/720P (1~60fps) |
| Compression | H.265, H.264, MJPEG |
| Bitrate Control | VBR, CBR (64 Kbps ~ 6 Mbps) |
| Multiple Streaming | 3 Streams |

Audio Specifications

| | |
|-------------|--|
| Mono Input | G.711A / G.711U |
| Mono Output | 2-way Audio Capable (Additional Equipment Required) |

Interfaces

| | |
|------------------|-------------------------------------|
| Ethernet | 10/100 Mbps RJ45 |
| Power | DC Jack |
| Microphone Input | 3.5mm |
| Audio Out | 3.5mm |
| Card Slot | MicroSD, up to 256GB (not included) |
| Alarm | 1-CH Alarm Input; 1-CH Alarm Output |
| Reset | Yes |

Network Specifications

| | |
|--------------|--|
| Protocols | UDP, IPv4, IPv6, DHCP, NTP, RTPS, PPPoE, DDNS, SMTP, FTP, SNMP, HTTP, 802.1x, UPnP, HTTPs, QoS |
| DDNS support | Speco DDNS (Free of Charge) |
| Security | Watermark, IP Address Filtering, Video Mask, Heartbeat, Password Protection, Non-Photosensitive Switch, Image Distortion Correction |
| User Access | Max. 10 Simultaneous Users Actual Number Of Users May Vary Depending On Bandwidth |

System Specifications

| | |
|----------------|---|
| PoE | Standard (IEEE 802.3af) |
| Analytics | Video Tampering Detection, Scene Change Detection, License Plate Recognition |
| Alarm Triggers | Motion Detection, Sensor Alarm, SD Card Error, SD Card Full, IP Address Conflict, Cable Disconnection |
| Image Settings | Region Of Interest, Saturation, Brightness, Chroma, Contrast, Noise Reduction |

Client Specifications

| | |
|---------------------|--|
| Web Browser Support | Chrom, Edge, Safari, Firefox, Windows (Internet Explorer 8 and Up) |
| PC Application | SecureGuard® VMS, SecureGuard® CMS, Speco Blue VMS |
| Mobile | SecureGuard® App; Speco Blue (iPhone® and Android™) |

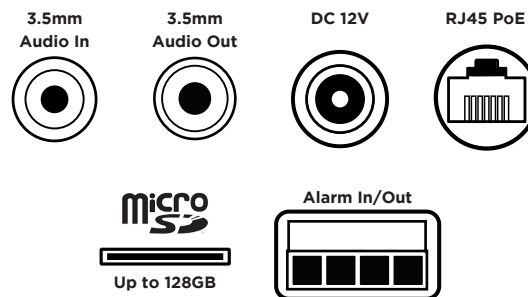
Operating & Unit Specifications

| | |
|-----------------------|--|
| Power | PoE, 12VDC (Power Supply Not Included) |
| Power Consumption | 11.0W (Max) |
| Operating Temperature | -40°F - 140°F |
| Operating Humidity | Less than 95% (Non-Condensing) |
| Unit Dimensions | 11.0" (L) x 3.94" (W) x 3.5" (H) |
| Unit Weight | 2.29 lbs. |
| Certifications | FCC, RoHS |

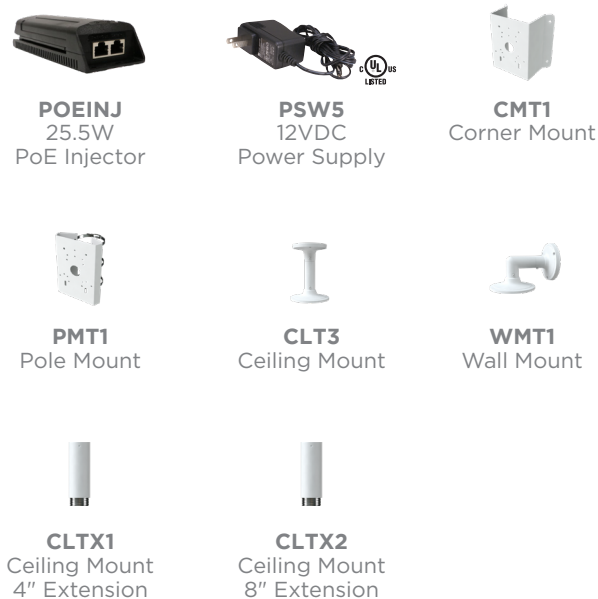
5 - 50mm Lens Installation Recommendations

| | |
|---------------|--|
| Overhead | Recommended Installation Height: 13 - 20 ft. Recommended Recognition Distance: 16 - 164 ft. |
| Entrance/Exit | Recommended Installation Height: 4.2 - 5 ft. Recommended Recognition Distance: 8 - 10 ft. |

Cameras Interfaces



Optional Accessories



ONVIF is a trademark of Onvif, Inc. Chrome and Firefox use Java which requires an initial internet connection. Apple and the Apple logo are trademarks of Apple Inc., registered in the U.S. and other countries. App Store is a service mark of Apple Inc. Android, Google Play and the Google Play logo are trademarks of Google Inc. Speco Technologies is constantly developing and improving products. We reserve the right to modify product design and specifications without notice and without incurring any obligation.

Revised 7/18/24

