



2MP IP License Plate Recognition Camera with Junction Box

O2BLP1M

7 - 22mm motorized lens, white housing

Features

- Captures License Plates up to 70mph*
- Search and Match Captured Plates with Recorder*
- Captures up to 2MP @ 30fps (60fps in High Frame Rate Mode)
- Built-in Standard PoE (IEEE 802.3af)
- Smart IR with Range up to 330' (Depending on Scene Reflection)
- Micro SD Card Slot up to 128GB (Card Not Included)
- Two-way Audio Support
- Alarm Input/Output
- ONVIF Profile T Compliant
- IP67 Weather Resistant
- Junction Box Included (Works with NPT/BSP Specification)

*In Optimal Conditions

**With Compatible Speco NR Series Recorder



Junction Box Included



Capture & Recognize Vehicle Plates



Camera Specifications

Image Sensor	1/2.8" Progressive Scan CMOS
Maximum Resolution	1920 x 1080 (2MP)
Field of View (H)	H: 44° ~ 17.6°; V: 25.6° ~ 10°; D: 49.7° ~ 20.2°
Minimum Illumination	0.005 lux@F1.6, AGC ON; 0 lux with IR
Day/Night	Smart IR
White Balance	Auto, Indoor, Outdoor, Manual
Electronic Shutter Speed	1/25s ~ 1/100000s
DNR	3D DNR
Angle Adjustment	Pan: 0°-360°; Tilt: 0°-90°; Rotation: 0°-360°

Video Specifications

Main Resolution	1080P / 720P (1 ~ 30fps); HFR Mode: 1080P/720P (1~60fps)
Compression	H.265, H.264, MJPEG
Bitrate Control	VBR, CBR (64 Kbps ~ 6 Mbps)
Multiple Streaming	3 streams

Audio Specifications

Mono Input	G.711A / G.711U
Mono Output	2-way Audio Capable (Additional Equipment Required)

Interfaces

Ethernet	10/100 Mbps RJ45
Power	DC Jack
Microphone Input	3.5mm
Audio Out	3.5mm
Card Slot	MicroSD, up to 128GB (not included)
Alarm	1-CH Alarm Input; 1-CH Alarm Output
Reset	Yes

Network Specifications

Protocols	UDP, IPv4, IPv6, DHCP, NTP, RTSP, PPPoE, DDNS, SMTP, FTP, SNMP, HTTP, 802.1x, UPnP, HTTPs, QoS
DDNS support	Speco DDNS (Free of Charge)
Security	Watermark, IP Address Filtering, Video Mask, Heartbeat, Password Protection, Non-Photosensitive Switch, Image Distortion Correction
User Access	Max. 10 Simultaneous Users Actual Number Of Users May Vary Depending On Bandwidth



System Specifications

PoE	Standard (IEEE 802.3af)
Analytics	Video Tampering Detection, Scene Change Detection, License Plate Recognition
Alarm Triggers	Motion Detection, Sensor Alarm, SD Card Error, SD Card Full, IP Address Conflict, Cable Disconnection
Image Settings	Region Of Interest, Saturation, Brightness, Chroma, Contrast, Noise Reduction

Client Specifications

Web Browser Support	Windows (Internet Explorer 8 and Up)
PC Application	Speco Blue VMS, SecureGuard® VMS, SecureGuard® CMS
Mobile	SecureGuard® Client; Speco Blue (iPhone® and Android™)

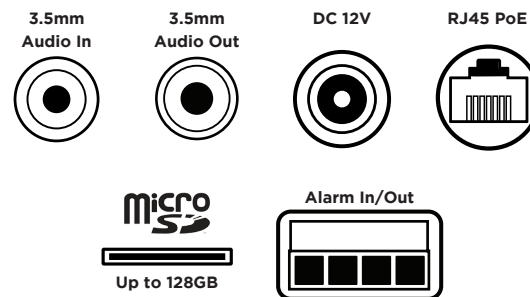
Operating & Unit Specifications

Power	PoE, 12VDC (Power Supply Not Included)
Power Consumption	11.0W (Max)
Operating Temperature	-40°F - 140°F
Operating Humidity	Less than 95% (Non-Condensing)
Unit Dimensions	11.0" (L) x 3.94" (W) x 3.5" (H)
Unit Weight	2.29 lbs.
Certifications	FCC, RoHS

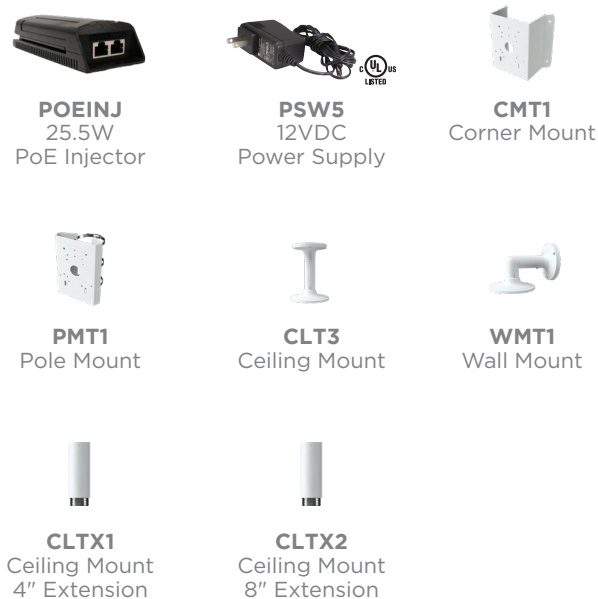
7 - 22mm Lens Installation Recommendations

Overhead	Recommended Installation Height: 15 - 20 ft. Recommended Recognition Distance: 23 - 98 ft.
Entrance/Exit	Recommended Installation Height: 4.2 - 5 ft. Recommended Recognition Distance: 8 - 10 ft.

Cameras Interfaces



Optional Accessories



ONVIF is a trademark of Onvif, Inc. Chrome and Firefox use Java which requires an initial internet connection. Apple and the Apple logo are trademarks of Apple Inc., registered in the U.S. and other countries. App Store is a service mark of Apple Inc. Android, Google Play and the Google Play logo are trademarks of Google Inc. Speco Technologies is constantly developing and improving products. We reserve the right to modify product design and specifications without notice and without incurring any obligation.

Revised 7/24/24

