



Quick Start Guide

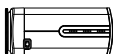
04T8



1 Warning and Caution

- If the product does not work properly, please contact your dealer or the nearest service center. Never attempt to disassemble the camera yourself. Any unauthorized changes or modifications could void the warranty.
- Do not allow water or liquid intrusion into the camera.
- All installation and operation here should conform to local electrical safety codes. Make sure the device is firmly installed on the wall or ceiling.
- Do not use camera beyond specified voltage range.
- Do not drop the camera or subject it to physical shock.
- Avoid touching the camera lens.
- If cleaning is necessary, please use cleaning cloth to wipe it gently.
- Do not aim the camera at the sun or extremely bright light sources.
- Do not place the camera in extremely hot or cold environments and dusty and damp locations. Do not expose it to highly electromagnetic radiation.
- Do not block any ventilations.

2 Package



Camera



Quick start guide



4 tapping screws



CD



Mounting block



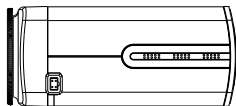
Terminal block for power



Screwdriver

3 Overview

Side Panel Instruction



Focus Adjusting

Iris Lens Plug

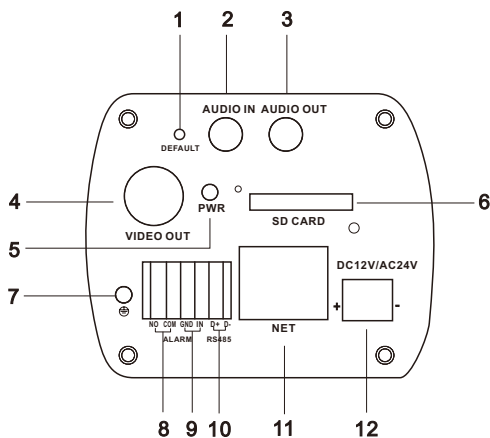


| | DC |
|---|----------|
| 1 | Damp - |
| 2 | Damp + |
| 3 | Driver + |
| 4 | Driver - |

Focus Adjusting: When it still fails to realize focusing after having confirmed the correct installation of lens, the back focus adjustment may be required .

Iris Lens Plug: The camera provides an iris lens plug in negative pattern with four square holes and the definition of pins is shown above. The interface of DC drive auto iris adopts four pins: Damp+, Drive+, Damp- and Drive-.

Rear Panel Connection

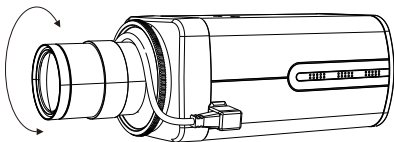


| | | | |
|---|-----------------|----|--------------------|
| 1 | Reset | 7 | Ground |
| 2 | Audio input | 8 | Alarm output |
| 3 | Audio output | 9 | Alarm input |
| 4 | Video output | 10 | Connect to PTZ |
| 5 | Power indicator | 11 | Ethernet interface |
| 6 | SD card slot | 12 | Power interface |

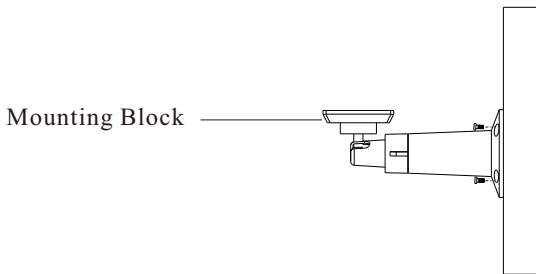
4 Installation

* Before you start, please make sure that the wall is strong enough to withstand three times the weight of the camera.

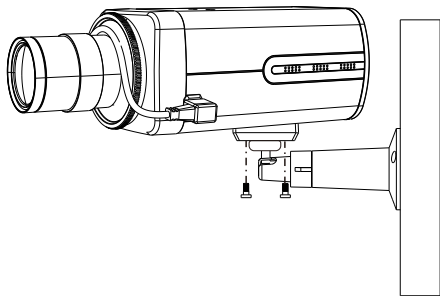
- ① Rotate the lens clockwise onto the lens mount of the camera.
- ② Plug the wire of auto iris lens to the auto iris interface of the camera.



- ③ Connect the power supply and video output.
- ④ Attach the mounting block to the bracket which shall be supplied by yourself and then install the bracket to the wall and tighten the screws to fix it as shown below.



- ⑤ Attach the camera to the bracket with the mounting block and tighten the screws to fix.

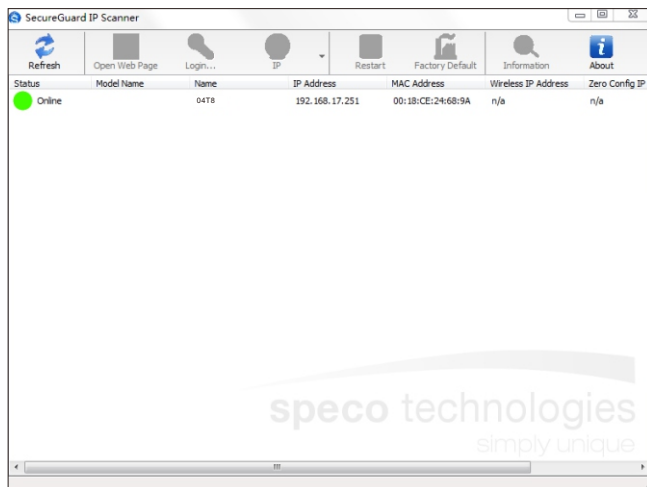


5 Web Operation and Login

IP Scanner can search for the device on the local network.

● Operation

- ① Make sure that the camera and the PC are connected to the same local network. The camera is set to DHCP by default.
- ② Install IP Scanner from the CD and run it after installation.



③ In the device list, you can view the IP address, model number, and MAC address of each device. Select the applicable device and double click to open up the web viewer. You can also manually enter the IP address in the address bar of the web browser.

speco technologies

Username

Password

Login Cancel

The login interface is shown above. Default user name is admin and password is 1234. After logging in, follow directions to install applicable plugins.